

Daily Summary for Amman Stock Exchange

VALUE TRADED (JD)

	2023	2024	NET CHANGE	CHANGE (%)
Daily	7,362,473	3,038,960	-4,323,513	-58.72%
Cumulative (3/3-10/3)	37,329,287	27,620,561	-9,708,726	-26.01%
Cumulative (2/1-10/3)	411,403,923	233,200,769	-178,203,154	-43.32%

NO. OF SHARES TRADED

	2023	2024	NET CHANGE	CHANGE (%)
Daily	5,508,174	3,358,420	-2,149,754	-39.03%
Cumulative (3/3-10/3)	32,139,090	23,957,102	-8,181,988	-25.46%
Cumulative (2/1-10/3)	257,083,304	194,408,149	-62,675,155	-24.38%

NO. OF TRANSACTIONS

	2023	2024	NET CHANGE	CHANGE (%)
Daily	3,212	2,224	-988	-30.76%
Cumulative (3/3-10/3)	18,239	15,487	-2,752	-15.09%
Cumulative (2/1-10/3)	171,654	123,183	-48,471	-28.24%

SOME FINANCIAL RATIOS FOR THE ASE (10/3/2024)

SECTOR	P/E	P/BV	DIVIDEND YIELD (%)	TURNOVER (%)
FINANCIAL	9.175	0.787	5.746	0.049
SERVICES	11.703	1.356	6.144	0.056
INDUSTRY	7.350	1.559	7.350	0.074
OVERALL	8.313	1.015	6.654	0.054

STOCK PRICE INDEX WEIGHTED BY FREE FLOAT MARKET CAPITALIZATION (1999=1000)

	THURSDAY 07/03/2024	SUNDAY 10/03/2024	% CHANGE	
			DAY BEFORE	YTD
GENERAL	2491.5	2496.8	0.21%	2.70%
FINANCIAL	2728.5	2731.1	0.10%	0.08%
SERVICES	1744.1	1757.3	0.75%	6.89%
INDUSTRY	4877.5	4865.0	-0.26%	3.10%

STOCK PRICE INDEX WEIGHTED BY FREE FLOAT MARKET CAPITALIZATION ASE20 (2014=1000)

	1344.9	1348.1	0.24%	3.00%
--	--------	--------	-------	-------

Total Return Index ASETR (2021=1074)

	1529.4	1533.2	0.24%	3.00%
--	--------	--------	-------	-------

STOCK PRICE INDEX WEIGHTED BY MARKET CAPITALIZATION (1991=1000)

	THURSDAY 07/03/2024	SUNDAY 10/03/2024	% CHANGE	
			DAY BEFORE	YTD
GENERAL	4513.1	4519.6	0.15%	2.34%
BANKS	6750.9	6776.7	0.38%	0.61%
INSURANCE	1316.0	1317.4	0.11%	2.53%
SERVICES	903.2	904.6	0.15%	2.95%
INDUSTRY	5976.0	5965.5	-0.18%	4.53%

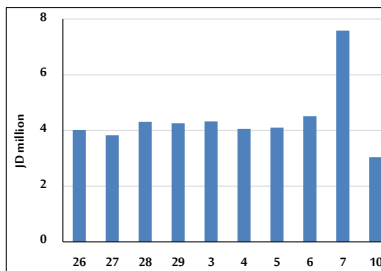
STOCK PRICE MARKET INDEX WEIGHTED BY FREE FLOAT MARKET CAP. (2012=1000)

	THURSDAY 07/03/2024	SUNDAY 10/03/2024	% CHANGE	
			DAY BEFORE	YTD
FIRST MARKET	1394.7	1398.1	0.24%	2.88%
SECOND MARKET	858.3	855.9	-0.28%	-0.97%

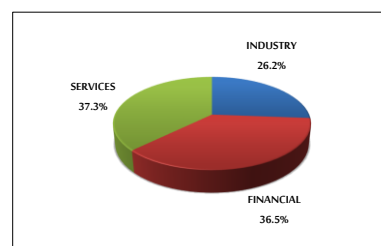
MARKET CAPITALIZATION (JD)

	17,213,996,489	17,243,634,352	0.17%	1.80%
--	----------------	----------------	-------	-------

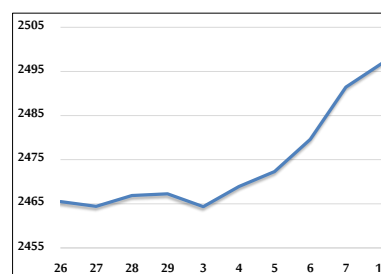
VALUE TRADED FROM 26/2 TO 10/3/2024



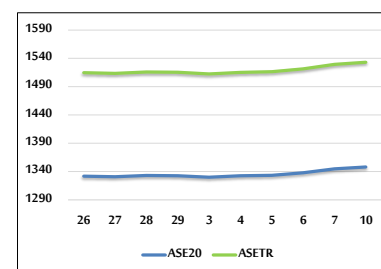
VALUE TRADED BY SECTOR SUNDAY 10/3/2024



GENERAL FREE FLOAT PRICE INDEX FROM 26/2 TO 10/3/2024



ASE20 and ASETR FREE FLOAT PRICE INDEX FROM 26/2 TO 10/3/2024



STOCK PRICE INDEX FROM 26/2 TO 10/3/2024

