

Daily Summary for Amman Stock Exchange

VALUE TRADED (JD)

	2023	2024	NET CHANGE	CHANGE (%)
Daily	4,117,235	4,013,946	-103,289	-2.51%
Cumulative (1/5-21/5)	78,270,964	51,293,267	-26,977,697	-34.47%
Cumulative (2/1-21/5)	723,786,025	433,217,683	-290,568,342	-40.15%

NO. OF SHARES TRADED

	2023	2024	NET CHANGE	CHANGE (%)
Daily	5,109,557	3,012,196	-2,097,361	-41.05%
Cumulative (1/5-21/5)	72,227,671	38,176,843	-34,050,828	-47.14%
Cumulative (2/1-21/5)	476,936,725	331,381,953	-145,554,772	-30.52%

NO. OF TRANSACTIONS

	2023	2024	NET CHANGE	CHANGE (%)
Daily	2,836	2,424	-412	-14.53%
Cumulative (1/5-21/5)	43,802	32,249	-11,553	-26.38%
Cumulative (2/1-21/5)	301,302	225,672	-75,630	-25.10%

SOME FINANCIAL RATIOS FOR THE ASE (21/5/2024)

SECTOR	P/E	P/BV	DIVIDEND YIELD (%)	TURNOVER (%)
FINANCIAL	8.625	0.748	6.051	0.036
SERVICES	11.902	1.284	6.041	0.094
INDUSTRY	7.843	1.365	8.363	0.049
OVERALL	8.194	0.945	7.179	0.049

STOCK PRICE INDEX WEIGHTED BY FREE FLOAT MARKET CAPITALIZATION (1999=1000)

	MONDAY 20/05/2024	TUESDAY 21/05/2024	% CHANGE	
			DAY BEFORE	YTD
GENERAL	2390.2	2392.6	0.10%	-1.59%
FINANCIAL	2623.9	2623.1	-0.03%	-3.88%
SERVICES	1673.0	1672.4	-0.03%	1.73%
INDUSTRY	4720.9	4749.0	0.59%	0.64%

STOCK PRICE INDEX WEIGHTED BY FREE FLOAT MARKET CAPITALIZATION ASE20 (2014=1000)

	1286.1	1287.8	0.13%	-1.61%
--	--------	--------	-------	--------

Total Return Index ASETR (2021=1074)

	1570.8	1572.9	0.13%	5.67%
--	--------	--------	-------	-------

STOCK PRICE INDEX WEIGHTED BY MARKET CAPITALIZATION (1991=1000)

	MONDAY 20/05/2024	TUESDAY 21/05/2024	% CHANGE	
			DAY BEFORE	YTD
GENERAL	4294.2	4307.3	0.31%	-2.47%
BANKS	6419.7	6429.6	0.15%	-4.54%
INSURANCE	1346.2	1341.1	-0.38%	4.37%
SERVICES	873.1	872.8	-0.04%	-0.67%
INDUSTRY	5658.2	5693.9	0.63%	-0.22%

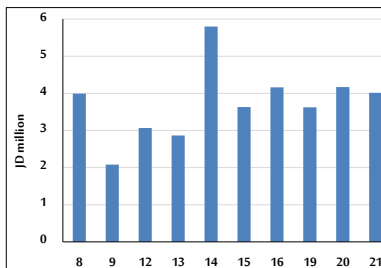
STOCK PRICE MARKET INDEX WEIGHTED BY FREE FLOAT MARKET CAP. (2012=1000)

	MONDAY 20/05/2024	TUESDAY 21/05/2024	% CHANGE	
			DAY BEFORE	YTD
FIRST MARKET	1335.1	1336.3	0.09%	-1.67%
SECOND MARKET	842.5	842.9	0.05%	-2.47%

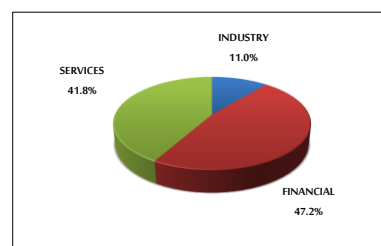
MARKET CAPITALIZATION (JD)

	16,384,607,681	16,426,588,710	0.26%	-3.03%
--	----------------	----------------	-------	--------

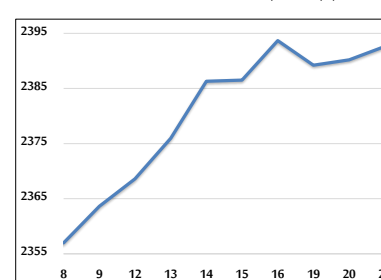
VALUE TRADED FROM 8/5 TO 21/5/2024



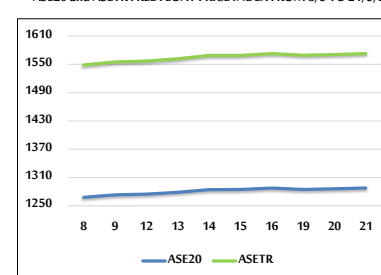
VALUE TRADED BY SECTOR TUESDAY 21/5/2024



GENERAL FREE FLOAT PRICE INDEX FROM 8/5 TO 21/5/2024



ASE20 and ASETR FREE FLOAT PRICE INDEX FROM 8/5 TO 21/5/2024



STOCK PRICE INDEX FROM 8/5 TO 21/5/2024

