

Daily Summary for Amman Stock Exchange

VALUE TRADED (JD)

	2023	2024	NET CHANGE	CHANGE (%)
Daily	4,475,889	4,197,168	-278,721	-6.23%
Cumulative (1/5-22/5)	82,746,853	55,490,435	-27,256,418	-32.94%
Cumulative (2/1-22/5)	728,261,914	437,414,851	-290,847,063	-39.94%

NO. OF SHARES TRADED

	2023	2024	NET CHANGE	CHANGE (%)
Daily	4,221,617	3,114,933	-1,106,684	-26.21%
Cumulative (1/5-22/5)	76,449,288	41,291,776	-35,157,512	-45.99%
Cumulative (2/1-22/5)	481,158,342	334,496,886	-146,661,456	-30.48%

NO. OF TRANSACTIONS

	2023	2024	NET CHANGE	CHANGE (%)
Daily	2,941	2,637	-304	-10.34%
Cumulative (1/5-22/5)	46,743	34,886	-11,857	-25.37%
Cumulative (2/1-22/5)	304,243	228,309	-75,934	-24.96%

SOME FINANCIAL RATIOS FOR THE ASE (22/5/2024)

SECTOR	P/E	P/BV	DIVIDEND YIELD (%)	TURNOVER (%)
FINANCIAL	8.708	0.755	5.958	0.040
SERVICES	11.990	1.293	5.996	0.084
INDUSTRY	8.022	1.397	8.177	0.058
OVERALL	8.311	0.958	7.078	0.051

STOCK PRICE INDEX WEIGHTED BY FREE FLOAT MARKET CAPITALIZATION (1999=1000)

	TUESDAY 21/05/2024	WEDNESDAY 22/05/2024	% CHANGE	
			DAY BEFORE	YTD
GENERAL	2392.6	2415.1	0.94%	-0.66%
FINANCIAL	2623.1	2646.1	0.87%	-3.04%
SERVICES	1672.4	1681.1	0.52%	2.25%
INDUSTRY	4749.0	4819.9	1.49%	2.14%

STOCK PRICE INDEX WEIGHTED BY FREE FLOAT MARKET CAPITALIZATION ASE20 (2014=1000)

	1287.8	1301.3	1.05%	-0.58%
--	--------	--------	-------	--------

Total Return Index ASETR (2021=1074)

	1572.9	1589.4	1.05%	6.78%
--	--------	--------	-------	-------

STOCK PRICE INDEX WEIGHTED BY MARKET CAPITALIZATION (1991=1000)

	TUESDAY 21/05/2024	WEDNESDAY 22/05/2024	% CHANGE	
			DAY BEFORE	YTD
GENERAL	4307.3	4368.5	1.42%	-1.08%
BANKS	6429.6	6490.0	0.94%	-3.65%
INSURANCE	1341.1	1361.1	1.49%	5.93%
SERVICES	872.8	880.5	0.88%	0.21%
INDUSTRY	5693.9	5821.9	2.25%	2.02%

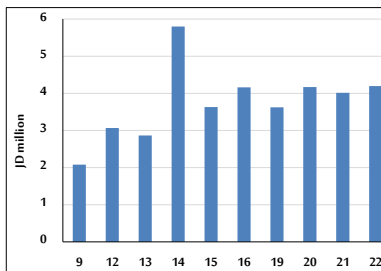
STOCK PRICE MARKET INDEX WEIGHTED BY FREE FLOAT MARKET CAP. (2012=1000)

	TUESDAY 21/05/2024	WEDNESDAY 22/05/2024	% CHANGE	
			DAY BEFORE	YTD
FIRST MARKET	1336.3	1349.7	1.00%	-0.68%
SECOND MARKET	842.9	844.6	0.19%	-2.28%

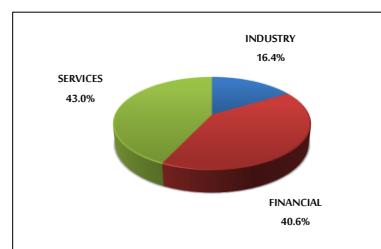
MARKET CAPITALIZATION (JD)

	16,426,588,710	16,643,680,301	1.32%	-1.74%
--	----------------	----------------	-------	--------

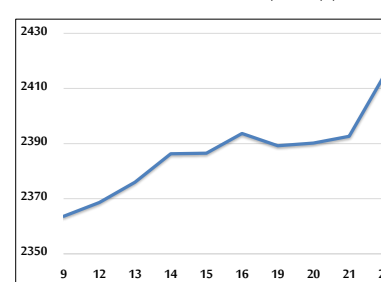
VALUE TRADED FROM 9/5 TO 22/5/2024



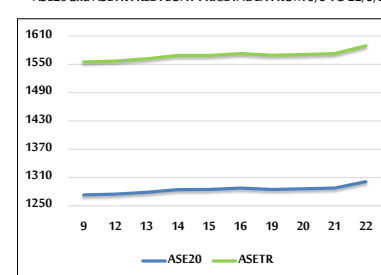
VALUE TRADED BY SECTOR WEDNESDAY 22/5/2024



GENERAL FREE FLOAT PRICE INDEX FROM 9/5 TO 22/5/2024



ASE20 and ASETR FREE FLOAT PRICE INDEX FROM 9/5 TO 22/5/2024



STOCK PRICE INDEX FROM 9/5 TO 22/5/2024

