

Daily Summary for Amman Stock Exchange

VALUE TRADED (JD)

	2023	2024	NET CHANGE	CHANGE (%)
Daily	7,398,489	5,284,666	-2,113,823	-28.57%
Cumulative (2/6-11/6)	41,557,418	32,086,510	-9,470,908	-22.79%
Cumulative (2/1-11/6)	802,845,220	588,863,028	-213,982,192	-26.65%

NO. OF SHARES TRADED

	2023	2024	NET CHANGE	CHANGE (%)
Daily	4,784,880	3,518,940	-1,265,940	-26.46%
Cumulative (2/6-11/6)	30,705,104	22,549,435	-8,155,669	-26.56%
Cumulative (2/1-11/6)	539,058,121	399,085,994	-139,972,127	-25.97%

NO. OF TRANSACTIONS

	2023	2024	NET CHANGE	CHANGE (%)
Daily	3,264	2,400	-864	-26.47%
Cumulative (2/6-11/6)	23,030	18,205	-4,825	-20.95%
Cumulative (2/1-11/6)	347,339	260,765	-86,574	-24.92%

SOME FINANCIAL RATIOS FOR THE ASE (11/6/2024)

SECTOR	P/E	P/BV	DIVIDEND YIELD (%)	TURNOVER (%)
FINANCIAL	8.622	0.747	5.991	0.041
SERVICES	12.160	1.312	5.912	0.121
INDUSTRY	8.032	1.398	8.167	0.041
OVERALL	8.292	0.956	7.097	0.057

STOCK PRICE INDEX WEIGHTED BY FREE FLOAT MARKET CAPITALIZATION (1999=1000)

	MONDAY 10/06/2024	TUESDAY 11/06/2024	% CHANGE	
			DAY BEFORE	YTD
GENERAL	2420.0	2406.3	-0.57%	-1.02%
FINANCIAL	2632.5	2616.3	-0.61%	-4.13%
SERVICES	1702.9	1699.3	-0.21%	3.36%
INDUSTRY	4864.6	4818.0	-0.96%	2.10%

STOCK PRICE INDEX WEIGHTED BY FREE FLOAT MARKET CAPITALIZATION ASE20 (2014=1000)

	1304.4	1296.8	-0.59%	-0.92%
--	--------	--------	--------	--------

Total Return Index ASETR (2021=1074)

	1593.2	1583.9	-0.59%	6.41%
--	--------	--------	--------	-------

STOCK PRICE INDEX WEIGHTED BY MARKET CAPITALIZATION (1991=1000)

	MONDAY 10/06/2024	TUESDAY 11/06/2024	% CHANGE	
			DAY BEFORE	YTD
GENERAL	4388.6	4358.4	-0.69%	-1.31%
BANKS	6460.9	6422.9	-0.59%	-4.64%
INSURANCE	1354.5	1354.6	0.01%	5.42%
SERVICES	895.2	896.8	0.18%	2.07%
INDUSTRY	5896.1	5831.3	-1.10%	2.18%

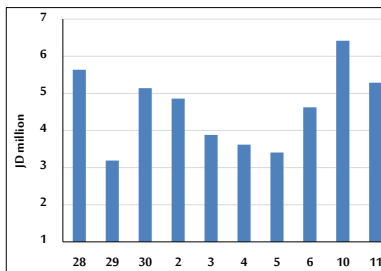
STOCK PRICE MARKET INDEX WEIGHTED BY FREE FLOAT MARKET CAP. (2012=1000)

	MONDAY 10/06/2024	TUESDAY 11/06/2024	% CHANGE	
			DAY BEFORE	YTD
FIRST MARKET	1353.9	1346.5	-0.55%	-0.91%
SECOND MARKET	843.5	836.9	-0.78%	-3.16%

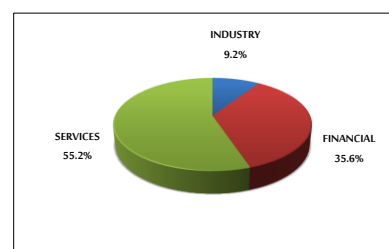
MARKET CAPITALIZATION (JD)

	16,709,986,620	16,602,970,589	-0.64%	-1.98%
--	----------------	----------------	--------	--------

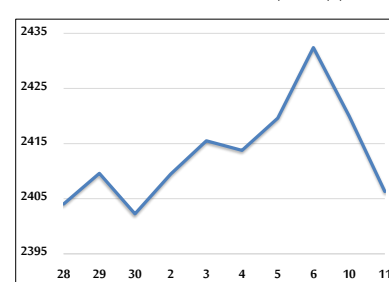
VALUE TRADED FROM 28/5 TO 11/6/2024



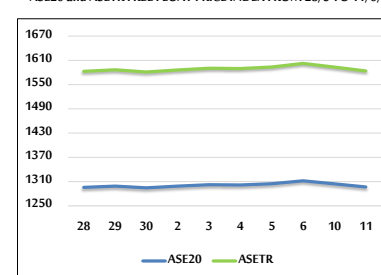
VALUE TRADED BY SECTOR TUESDAY 11/6/2024



GENERAL FREE FLOAT PRICE INDEX FROM 28/5 TO 11/6/2024



ASE20 and ASETR FREE FLOAT PRICE INDEX FROM 28/5 TO 11/6/2024



STOCK PRICE INDEX FROM 28/5 TO 11/6/2024

