

Daily Summary for Amman Stock Exchange

VALUE TRADED (JD)

	2023	2024	NET CHANGE	CHANGE (%)
Daily	4,867,982	3,624,254	-1,243,728	-25.55%
Cumulative (2/6-12/6)	46,425,400	35,710,764	-10,714,636	-23.08%
Cumulative (2/1-12/6)	807,713,202	592,487,282	-215,225,920	-26.65%

NO. OF SHARES TRADED

	2023	2024	NET CHANGE	CHANGE (%)
Daily	4,206,200	2,269,816	-1,936,384	-46.04%
Cumulative (2/6-12/6)	34,911,304	24,819,251	-10,092,053	-28.91%
Cumulative (2/1-12/6)	543,264,321	401,355,810	-141,908,511	-26.12%

NO. OF TRANSACTIONS

	2023	2024	NET CHANGE	CHANGE (%)
Daily	2,872	1,928	-944	-32.87%
Cumulative (2/6-12/6)	25,902	20,133	-5,769	-22.27%
Cumulative (2/1-12/6)	350,211	262,693	-87,518	-24.99%

SOME FINANCIAL RATIOS FOR THE ASE (12/6/2024)

SECTOR	P/E	P/BV	DIVIDEND YIELD (%)	TURNOVER (%)
FINANCIAL	8.635	0.749	5.982	0.029
SERVICES	12.164	1.312	5.910	0.073
INDUSTRY	8.047	1.401	8.151	0.017
OVERALL	8.304	0.958	7.087	0.037

STOCK PRICE INDEX WEIGHTED BY FREE FLOAT MARKET CAPITALIZATION (1999=1000)

	TUESDAY 11/06/2024	WEDNESDAY 12/06/2024	% CHANGE	
			DAY BEFORE	YTD
GENERAL	2406.3	2414.2	0.33%	-0.70%
FINANCIAL	2616.3	2627.0	0.41%	-3.74%
SERVICES	1699.3	1697.9	-0.08%	3.27%
INDUSTRY	4818.0	4832.3	0.30%	2.41%

STOCK PRICE INDEX WEIGHTED BY FREE FLOAT MARKET CAPITALIZATION ASE20 (2014=1000)

	1296.8	1301.3	0.35%	-0.58%
--	--------	--------	-------	--------

Total Return Index ASETR (2021=1074)

	1583.9	1589.3	0.35%	6.78%
--	--------	--------	-------	-------

STOCK PRICE INDEX WEIGHTED BY MARKET CAPITALIZATION (1991=1000)

	TUESDAY 11/06/2024	WEDNESDAY 12/06/2024	% CHANGE	
			DAY BEFORE	YTD
GENERAL	4358.4	4364.6	0.14%	-1.17%
BANKS	6422.9	6432.5	0.15%	-4.50%
INSURANCE	1354.6	1361.1	0.48%	5.93%
SERVICES	896.8	900.7	0.44%	2.52%
INDUSTRY	5831.3	5833.0	0.03%	2.21%

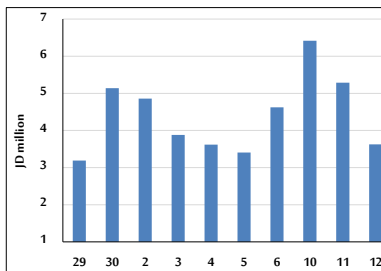
STOCK PRICE MARKET INDEX WEIGHTED BY FREE FLOAT MARKET CAP. (2012=1000)

	TUESDAY 11/06/2024	WEDNESDAY 12/06/2024	% CHANGE	
			DAY BEFORE	YTD
FIRST MARKET	1346.5	1351.1	0.34%	-0.58%
SECOND MARKET	836.9	832.9	-0.49%	-3.63%

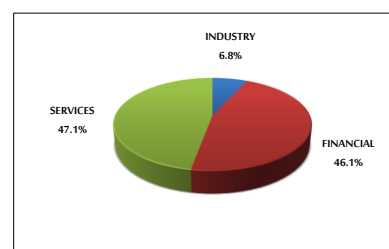
MARKET CAPITALIZATION (JD)

	16,602,970,589	16,627,544,379	0.15%	-1.84%
--	----------------	----------------	-------	--------

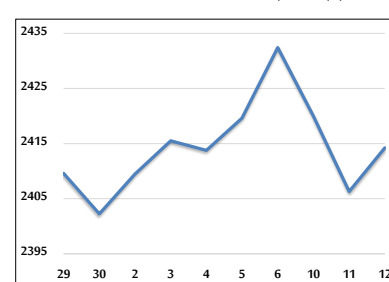
VALUE TRADED FROM 29/5 TO 12/6/2024



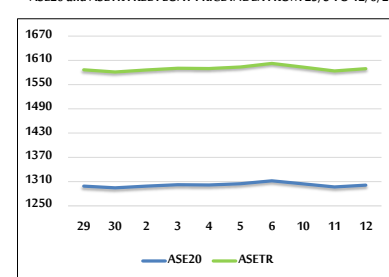
VALUE TRADED BY SECTOR WEDNESDAY 12/6/2024



GENERAL FREE FLOAT PRICE INDEX FROM 29/5 TO 12/6/2024



ASE20 and ASETR FREE FLOAT PRICE INDEX FROM 29/5 TO 12/6/2024



STOCK PRICE INDEX FROM 29/5 TO 12/6/2024

