

Daily Summary for Amman Stock Exchange

VALUE TRADED (JD)

	2023	2024	NET CHANGE	CHANGE (%)
Daily	4,558,685	4,449,069	-109,616	-2.40%
Cumulative (1/7-14/7)	48,420,658	35,173,778	-13,246,880	-27.36%
Cumulative (2/1-14/7)	911,741,377	657,395,325	-254,346,052	-27.90%

NO. OF SHARES TRADED

	2023	2024	NET CHANGE	CHANGE (%)
Daily	3,119,512	4,072,430	952,918	30.55%
Cumulative (1/7-14/7)	31,742,347	33,803,128	2,060,781	6.49%
Cumulative (2/1-14/7)	625,253,429	462,110,953	-163,142,476	-26.09%

NO. OF TRANSACTIONS

	2023	2024	NET CHANGE	CHANGE (%)
Daily	2,087	2,785	698	33.45%
Cumulative (1/7-14/7)	23,087	20,963	-2,124	-9.20%
Cumulative (2/1-14/7)	399,002	298,222	-100,780	-25.26%

SOME FINANCIAL RATIOS FOR THE ASE (14/7/2024)

SECTOR	P/E	P/BV	DIVIDEND YIELD (%)	TURNOVER (%)
FINANCIAL	8.619	0.743	6.037	0.052
SERVICES	12.366	1.334	5.814	0.115
INDUSTRY	8.217	1.430	7.983	0.060
OVERALL	8.361	0.966	7.030	0.066

STOCK PRICE INDEX WEIGHTED BY FREE FLOAT MARKET CAPITALIZATION (1999=1000)

	THURSDAY 11/07/2024	SUNDAY 14/07/2024	% CHANGE	
			DAY BEFORE	YTD
GENERAL	2427.0	2426.0	-0.04%	-0.21%
FINANCIAL	2611.4	2609.1	-0.09%	-4.39%
SERVICES	1746.0	1741.4	-0.27%	5.92%
INDUSTRY	4861.4	4889.1	0.57%	3.61%

STOCK PRICE INDEX WEIGHTED BY FREE FLOAT MARKET CAPITALIZATION ASE20 (2014=1000)

	1308.4	1307.8	-0.05%	-0.08%
--	--------	--------	--------	--------

Total Return Index ASETR (2021=1074)

	1598.1	1597.3	-0.05%	7.31%
--	--------	--------	--------	-------

STOCK PRICE INDEX WEIGHTED BY MARKET CAPITALIZATION (1991=1000)

	THURSDAY 11/07/2024	SUNDAY 14/07/2024	% CHANGE	
			DAY BEFORE	YTD
GENERAL	4391.9	4393.3	0.03%	-0.52%
BANKS	6407.5	6394.8	-0.20%	-5.06%
INSURANCE	1346.8	1347.6	0.06%	4.88%
SERVICES	909.7	907.2	-0.28%	3.25%
INDUSTRY	5942.8	5968.2	0.43%	4.58%

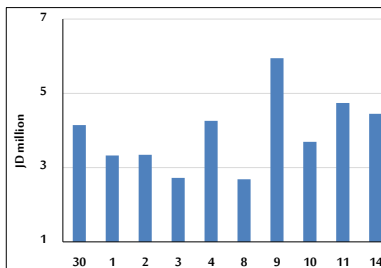
STOCK PRICE MARKET INDEX WEIGHTED BY FREE FLOAT MARKET CAP. (2012=1000)

	THURSDAY 11/07/2024	SUNDAY 14/07/2024	% CHANGE	
			DAY BEFORE	YTD
FIRST MARKET	1359.5	1358.7	-0.05%	-0.02%
SECOND MARKET	823.9	826.0	0.26%	-4.42%

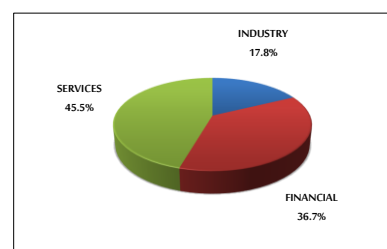
MARKET CAPITALIZATION (JD)

	16,715,980,189	16,729,320,405	0.08%	-1.24%
--	----------------	----------------	-------	--------

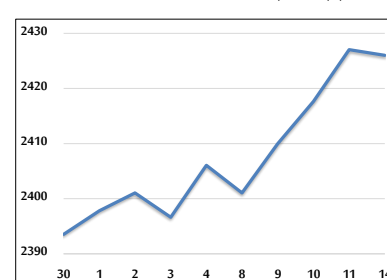
VALUE TRADED FROM 30/6 TO 14/7/2024



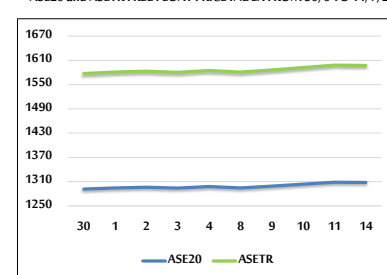
VALUE TRADED BY SECTOR SUNDAY 14/7/2024



GENERAL FREE FLOAT PRICE INDEX FROM 30/6 TO 14/7/2024



ASE20 and ASETR FREE FLOAT PRICE INDEX FROM 30/6 TO 14/7/2024



STOCK PRICE INDEX FROM 30/6 TO 14/7/2024

