

Daily Summary for Amman Stock Exchange

VALUE TRADED (JD)

	2023	2024	NET CHANGE	CHANGE (%)
Daily	6,549,957	2,799,500	-3,750,457	-57.26%
Cumulative (1/7-24/7)	98,167,969	65,910,513	-32,257,456	-32.86%
Cumulative (2/1-24/7)	961,488,688	688,132,060	-273,356,628	-28.43%

NO. OF SHARES TRADED

	2023	2024	NET CHANGE	CHANGE (%)
Daily	3,580,162	2,362,140	-1,218,022	-34.02%
Cumulative (1/7-24/7)	62,240,790	62,508,669	267,879	0.43%
Cumulative (2/1-24/7)	655,751,872	490,816,494	-164,935,378	-25.15%

NO. OF TRANSACTIONS

	2023	2024	NET CHANGE	CHANGE (%)
Daily	2,695	2,185	-510	-18.92%
Cumulative (1/7-24/7)	44,372	40,182	-4,190	-9.44%
Cumulative (2/1-24/7)	420,287	317,441	-102,846	-24.47%

SOME FINANCIAL RATIOS FOR THE ASE (24/7/2024)

SECTOR	P/E	P/BV	DIVIDEND YIELD (%)	TURNOVER (%)
FINANCIAL	8.608	0.742	6.045	0.032
SERVICES	12.110	1.306	5.937	0.069
INDUSTRY	8.094	1.409	8.104	0.021
OVERALL	8.283	0.957	7.096	0.038

STOCK PRICE INDEX WEIGHTED BY FREE FLOAT MARKET CAPITALIZATION (1999=1000)

	TUESDAY 23/07/2024	WEDNESDAY 24/07/2024	% CHANGE	
			DAY BEFORE	YTD
GENERAL	2405.6	2405.5	-0.01%	-1.06%
FINANCIAL	2613.8	2610.2	-0.14%	-4.35%
SERVICES	1689.6	1697.6	0.47%	3.26%
INDUSTRY	4848.3	4845.4	-0.06%	2.68%

STOCK PRICE INDEX WEIGHTED BY FREE FLOAT MARKET CAPITALIZATION ASE20 (2014=1000)

	1296.1	1294.0	-0.17%	-1.13%
--	--------	--------	--------	--------

Total Return Index ASETR (2021=1074)

	1583.1	1580.4	-0.17%	6.18%
--	--------	--------	--------	-------

STOCK PRICE INDEX WEIGHTED BY MARKET CAPITALIZATION (1991=1000)

	TUESDAY 23/07/2024	WEDNESDAY 24/07/2024	% CHANGE	
			DAY BEFORE	YTD
GENERAL	4356.6	4352.0	-0.10%	-1.46%
BANKS	6393.5	6378.9	-0.23%	-5.30%
INSURANCE	1339.2	1341.8	0.19%	4.43%
SERVICES	890.7	897.4	0.75%	2.14%
INDUSTRY	5874.5	5861.2	-0.23%	2.71%

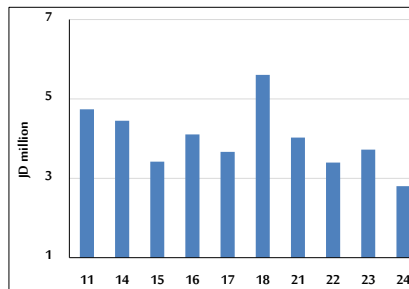
STOCK PRICE MARKET INDEX WEIGHTED BY FREE FLOAT MARKET CAP. (2012=1000)

	TUESDAY 23/07/2024	WEDNESDAY 24/07/2024	% CHANGE	
			DAY BEFORE	YTD
FIRST MARKET	1346.2	1345.3	-0.06%	-1.01%
SECOND MARKET	833.8	841.6	0.93%	-2.62%

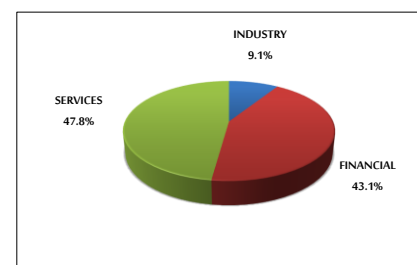
MARKET CAPITALIZATION (JD)

	16,591,881,600	16,579,318,527	-0.08%	-2.12%
--	----------------	----------------	--------	--------

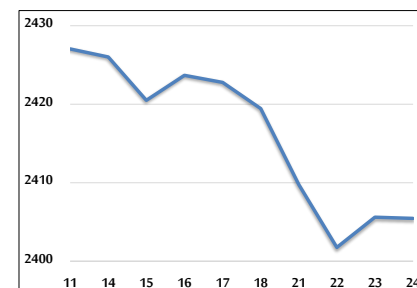
VALUE TRADED FROM 11/7 TO 24/7/2024



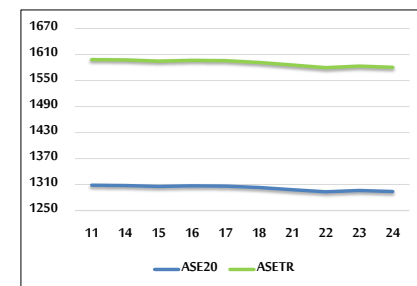
VALUE TRADED BY SECTOR WEDNESDAY 24/7/2024



GENERAL FREE FLOAT PRICE INDEX FROM 11/7 TO 24/7/2024



ASE20 and ASETR FREE FLOAT PRICE INDEX FROM 11/7 TO 24/7/2024



STOCK PRICE INDEX FROM 11/7 TO 24/7/2024

