

Daily Summary for Amman Stock Exchange

VALUE TRADED (JD)

	2023	2024	NET CHANGE	CHANGE (%)
Daily	6,177,857	5,066,167	-1,111,690	-17.99%
Cumulative (1/7-25/7)	104,345,826	70,976,680	-33,369,146	-31.98%
Cumulative (2/1-25/7)	967,666,545	693,198,227	-274,468,318	-28.36%

NO. OF SHARES TRADED

	2023	2024	NET CHANGE	CHANGE (%)
Daily	3,939,285	4,518,597	579,312	14.71%
Cumulative (1/7-25/7)	66,180,075	67,027,266	847,191	1.28%
Cumulative (2/1-25/7)	659,691,157	495,335,091	-164,356,066	-24.91%

NO. OF TRANSACTIONS

	2023	2024	NET CHANGE	CHANGE (%)
Daily	2,383	3,000	617	25.89%
Cumulative (1/7-25/7)	46,755	43,182	-3,573	-7.64%
Cumulative (2/1-25/7)	422,670	320,441	-102,229	-24.19%

SOME FINANCIAL RATIOS FOR THE ASE (25/7/2024)

SECTOR	P/E	P/BV	DIVIDEND YIELD (%)	TURNOVER (%)
FINANCIAL	8.663	0.746	6.007	0.058
SERVICES	12.116	1.307	5.934	0.129
INDUSTRY	8.085	1.407	8.113	0.066
OVERALL	8.309	0.960	7.074	0.073

STOCK PRICE INDEX WEIGHTED BY FREE FLOAT MARKET CAPITALIZATION (1999=1000)

	WEDNESDAY 24/07/2024	THURSDAY 25/07/2024	% CHANGE	
			DAY BEFORE	YTD
GENERAL	2405.5	2416.1	0.44%	-0.62%
FINANCIAL	2610.2	2627.8	0.68%	-3.71%
SERVICES	1697.6	1698.7	0.07%	3.33%
INDUSTRY	4845.4	4843.8	-0.03%	2.65%

STOCK PRICE INDEX WEIGHTED BY FREE FLOAT MARKET CAPITALIZATION ASE20 (2014=1000)

	1294.0	1300.0	0.47%	-0.67%
--	--------	--------	-------	--------

Total Return Index ASETR (2021=1074)

	1580.4	1587.8	0.47%	6.67%
--	--------	--------	-------	-------

STOCK PRICE INDEX WEIGHTED BY MARKET CAPITALIZATION (1991=1000)

	WEDNESDAY 24/07/2024	THURSDAY 25/07/2024	% CHANGE	
			DAY BEFORE	YTD
GENERAL	4352.0	4365.6	0.31%	-1.15%
BANKS	6378.9	6423.9	0.71%	-4.63%
INSURANCE	1341.8	1346.0	0.32%	4.76%
SERVICES	897.4	896.4	-0.11%	2.02%
INDUSTRY	5861.2	5857.4	-0.07%	2.64%

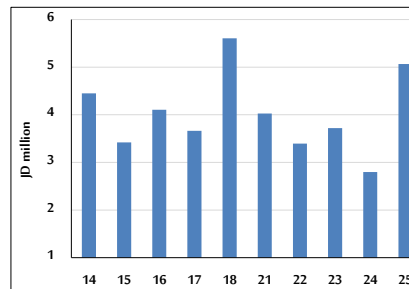
STOCK PRICE MARKET INDEX WEIGHTED BY FREE FLOAT MARKET CAP. (2012=1000)

	WEDNESDAY 24/07/2024	THURSDAY 25/07/2024	% CHANGE	
			DAY BEFORE	YTD
FIRST MARKET	1345.3	1351.9	0.49%	-0.52%
SECOND MARKET	841.6	840.6	-0.12%	-2.73%

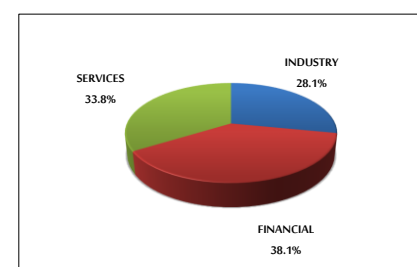
MARKET CAPITALIZATION (JD)

	16,579,318,527	16,626,993,774	0.29%	-1.84%
--	----------------	----------------	-------	--------

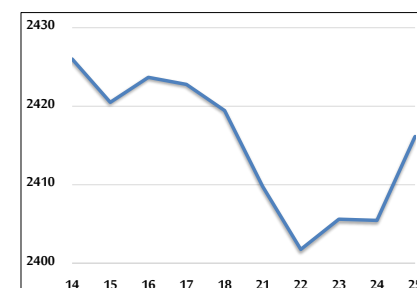
VALUE TRADED FROM 14/7 TO 25/7/2024



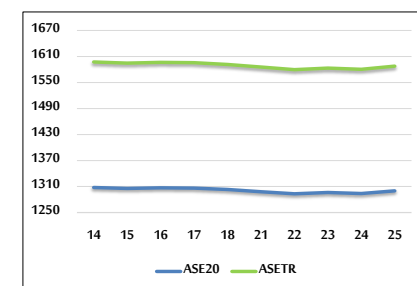
VALUE TRADED BY SECTOR THURSDAY 25/7/2024



GENERAL FREE FLOAT PRICE INDEX FROM 14/7 TO 25/7/2024



ASE20 and ASETR FREE FLOAT PRICE INDEX FROM 14/7 TO 25/7/2024



STOCK PRICE INDEX FROM 14/7 TO 25/7/2024

