

## Daily Summary for Amman Stock Exchange

### VALUE TRADED (JD)

	2023	2024	NET CHANGE	CHANGE (%)
Daily	8,428,355	4,090,489	-4,337,866	-51.47%
Cumulative (1/7-28/7)	112,774,181	75,067,169	-37,707,012	-33.44%
Cumulative (2/1-28/7)	976,094,900	697,288,716	-278,806,184	-28.56%

### NO. OF SHARES TRADED

	2023	2024	NET CHANGE	CHANGE (%)
Daily	4,519,521	2,740,255	-1,779,266	-39.37%
Cumulative (1/7-28/7)	70,699,596	69,767,521	-932,075	-1.32%
Cumulative (2/1-28/7)	664,210,678	498,075,346	-166,135,332	-25.01%

### NO. OF TRANSACTIONS

	2023	2024	NET CHANGE	CHANGE (%)
Daily	2,815	2,307	-508	-18.05%
Cumulative (1/7-28/7)	49,570	45,489	-4,081	-8.23%
Cumulative (2/1-28/7)	425,485	322,748	-102,737	-24.15%

### SOME FINANCIAL RATIOS FOR THE ASE (28/7/2024)

SECTOR	P/E	P/BV	DIVIDEND YIELD (%)	TURNOVER (%)
FINANCIAL	8.658	0.746	5.996	0.029
SERVICES	12.140	1.310	5.922	0.098
INDUSTRY	8.116	1.413	8.082	0.042
OVERALL	8.322	0.961	7.056	0.045

### STOCK PRICE INDEX WEIGHTED BY FREE FLOAT MARKET CAPITALIZATION (1999=1000)

	THURSDAY 25/07/2024	SUNDAY 28/07/2024	% CHANGE	
			DAY BEFORE	YTD
GENERAL	2416.1	2415.0	-0.05%	-0.67%
FINANCIAL	2627.8	2622.5	-0.20%	-3.90%
SERVICES	1698.7	1697.7	-0.06%	3.26%
INDUSTRY	4843.8	4866.6	0.47%	3.13%

### STOCK PRICE INDEX WEIGHTED BY FREE FLOAT MARKET CAPITALIZATION ASE20 (2014=1000)

	1300.0	1298.3	-0.13%	-0.80%
--	--------	--------	--------	--------

### Total Return Index ASETR (2021=1074)

	1587.8	1585.7	-0.13%	6.53%
--	--------	--------	--------	-------

### STOCK PRICE INDEX WEIGHTED BY MARKET CAPITALIZATION (1991=1000)

	THURSDAY 25/07/2024	SUNDAY 28/07/2024	% CHANGE	
			DAY BEFORE	YTD
GENERAL	4365.6	4372.6	0.16%	-0.99%
BANKS	6423.9	6417.8	-0.09%	-4.72%
INSURANCE	1346.0	1347.9	0.14%	4.90%
SERVICES	896.4	901.8	0.60%	2.63%
INDUSTRY	5857.4	5877.4	0.34%	2.99%

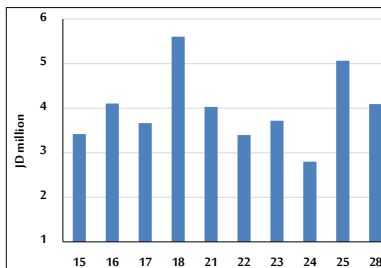
### STOCK PRICE MARKET INDEX WEIGHTED BY FREE FLOAT MARKET CAP. (2012=1000)

	THURSDAY 25/07/2024	SUNDAY 28/07/2024	% CHANGE	
			DAY BEFORE	YTD
FIRST MARKET	1351.9	1350.8	-0.08%	-0.60%
SECOND MARKET	840.6	842.1	0.18%	-2.56%

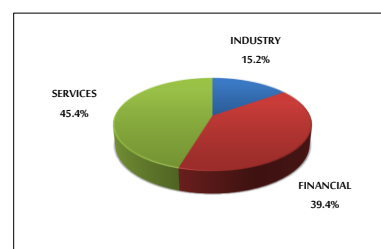
### MARKET CAPITALIZATION (JD)

	16,626,993,774	16,649,332,361	0.13%	-1.71%
--	----------------	----------------	-------	--------

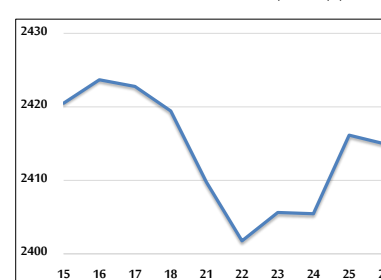
### VALUE TRADED FROM 15/7 TO 28/7/2024



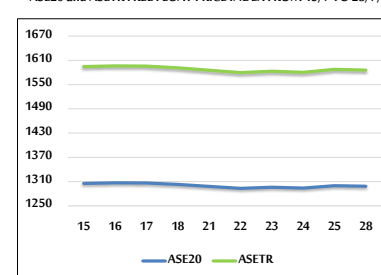
### VALUE TRADED BY SECTOR SUNDAY 28/7/2024



### GENERAL FREE FLOAT PRICE INDEX FROM 15/7 TO 28/7/2024



### ASE20 and ASETR FREE FLOAT PRICE INDEX FROM 15/7 TO 28/7/2024



### STOCK PRICE INDEX FROM 15/7 TO 28/7/2024

