

Daily Summary for Amman Stock Exchange

VALUE TRADED (JD)

	2023	2024	NET CHANGE	CHANGE (%)
Daily	4,976,943	5,496,634	519,691	10.44%
Cumulative (1/7-29/7)	117,751,124	80,563,803	-37,187,321	-31.58%
Cumulative (2/1-29/7)	981,071,843	702,785,350	-278,286,493	-28.37%

NO. OF SHARES TRADED

	2023	2024	NET CHANGE	CHANGE (%)
Daily	2,835,469	3,692,425	856,956	30.22%
Cumulative (1/7-29/7)	73,535,065	73,459,946	-75,119	-0.10%
Cumulative (2/1-29/7)	667,046,147	501,767,771	-165,278,376	-24.78%

NO. OF TRANSACTIONS

	2023	2024	NET CHANGE	CHANGE (%)
Daily	2,354	2,290	-64	-2.72%
Cumulative (1/7-29/7)	51,924	47,779	-4,145	-7.98%
Cumulative (2/1-29/7)	427,839	325,038	-102,801	-24.03%

SOME FINANCIAL RATIOS FOR THE ASE (29/7/2024)

SECTOR	P/E	P/BV	DIVIDEND YIELD (%)	TURNOVER (%)
FINANCIAL	8.684	0.748	5.978	0.047
SERVICES	12.125	1.308	5.930	0.108
INDUSTRY	8.068	1.405	8.130	0.051
OVERALL	8.316	0.960	7.061	0.060

STOCK PRICE INDEX WEIGHTED BY FREE FLOAT MARKET CAPITALIZATION (1999=1000)

	SUNDAY 28/07/2024	MONDAY 29/07/2024	% CHANGE	
			DAY BEFORE	YTD
GENERAL	2415.0	2418.5	0.15%	-0.52%
FINANCIAL	2622.5	2629.6	0.27%	-3.64%
SERVICES	1697.7	1701.1	0.20%	3.47%
INDUSTRY	4866.6	4843.2	-0.48%	2.64%

STOCK PRICE INDEX WEIGHTED BY FREE FLOAT MARKET CAPITALIZATION ASE20 (2014=1000)

	1298.3	1301.5	0.25%	-0.56%
--	--------	--------	-------	--------

Total Return Index ASETR (2021=1074)

	1585.7	1589.6	0.25%	6.80%
--	--------	--------	-------	-------

STOCK PRICE INDEX WEIGHTED BY MARKET CAPITALIZATION (1991=1000)

	SUNDAY 28/07/2024	MONDAY 29/07/2024	% CHANGE	
			DAY BEFORE	YTD
GENERAL	4372.6	4369.4	-0.07%	-1.06%
BANKS	6417.8	6438.2	0.32%	-4.42%
INSURANCE	1347.9	1362.2	1.06%	6.01%
SERVICES	901.8	901.5	-0.03%	2.60%
INDUSTRY	5877.4	5841.8	-0.61%	2.37%

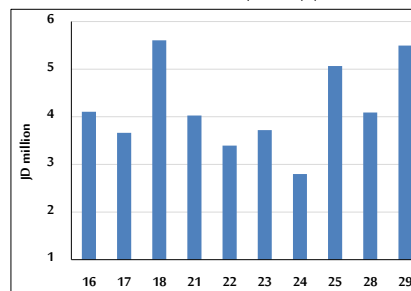
STOCK PRICE MARKET INDEX WEIGHTED BY FREE FLOAT MARKET CAP. (2012=1000)

	SUNDAY 28/07/2024	MONDAY 29/07/2024	% CHANGE	
			DAY BEFORE	YTD
FIRST MARKET	1350.8	1353.2	0.18%	-0.42%
SECOND MARKET	842.1	840.0	-0.25%	-2.80%

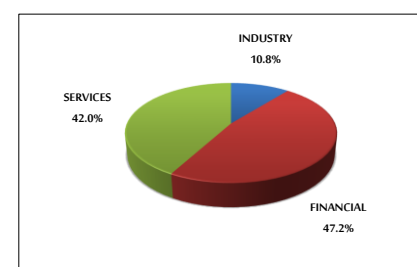
MARKET CAPITALIZATION (JD)

	16,649,332,361	16,638,231,810	-0.07%	-1.78%
--	----------------	----------------	--------	--------

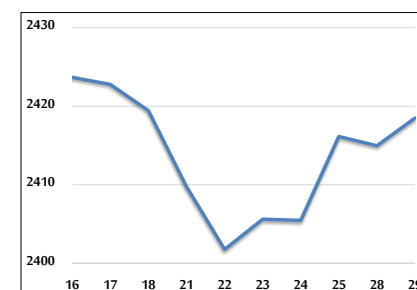
VALUE TRADED FROM 16/7 TO 29/7/2024



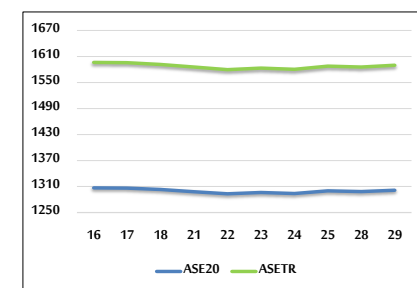
VALUE TRADED BY SECTOR MONDAY 29/7/2024



GENERAL FREE FLOAT PRICE INDEX FROM 16/7 TO 29/7/2024



ASE20 and ASETR FREE FLOAT PRICE INDEX FROM 16/7 TO 29/7/2024



STOCK PRICE INDEX FROM 16/7 TO 29/7/2024

