

## Daily Summary for Amman Stock Exchange

### VALUE TRADED (JD)

	2023	2024	NET CHANGE	CHANGE (%)
Daily	-	4,296,070	-	-
Cumulative (1/7-30/7)	117,751,124	84,859,873	-32,891,251	-27.93%
Cumulative (2/1-30/7)	981,071,843	707,081,420	-273,990,423	-27.93%

### NO. OF SHARES TRADED

	2023	2024	NET CHANGE	CHANGE (%)
Daily	-	2,989,000	-	-
Cumulative (1/7-30/7)	73,535,065	76,448,946	2,913,881	3.96%
Cumulative (2/1-30/7)	667,046,147	504,756,771	-162,289,376	-24.33%

### NO. OF TRANSACTIONS

	2023	2024	NET CHANGE	CHANGE (%)
Daily	-	2,546	-	-
Cumulative (1/7-30/7)	51,924	50,325	-1,599	-3.08%
Cumulative (2/1-30/7)	427,839	327,584	-100,255	-23.43%

### SOME FINANCIAL RATIOS FOR THE ASE (30/7/2024)

SECTOR	P/E	P/BV	DIVIDEND YIELD (%)	TURNOVER (%)
FINANCIAL	8.690	0.749	5.974	0.031
SERVICES	12.073	1.302	5.955	0.090
INDUSTRY	7.914	1.378	8.288	0.079
OVERALL	8.256	0.953	7.112	0.049

### STOCK PRICE INDEX WEIGHTED BY FREE FLOAT MARKET CAPITALIZATION (1999=1000)

	MONDAY 29/07/2024	TUESDAY 30/07/2024	% CHANGE	
			DAY BEFORE	YTD
GENERAL	2418.5	2413.2	-0.22%	-0.74%
FINANCIAL	2629.6	2636.8	0.27%	-3.38%
SERVICES	1701.1	1688.8	-0.73%	2.72%
INDUSTRY	4843.2	4785.2	-1.20%	1.41%

### STOCK PRICE INDEX WEIGHTED BY FREE FLOAT MARKET CAPITALIZATION ASE20 (2014=1000)

	1301.5	1299.7	-0.14%	-0.69%
--	--------	--------	--------	--------

### Total Return Index ASETR (2021=1074)

	1589.6	1587.5	-0.14%	6.65%
--	--------	--------	--------	-------

### STOCK PRICE INDEX WEIGHTED BY MARKET CAPITALIZATION (1991=1000)

	MONDAY 29/07/2024	TUESDAY 30/07/2024	% CHANGE	
			DAY BEFORE	YTD
GENERAL	4369.4	4337.8	-0.72%	-1.78%
BANKS	6438.2	6445.5	0.11%	-4.31%
INSURANCE	1362.2	1361.4	-0.06%	5.95%
SERVICES	901.5	898.2	-0.37%	2.23%
INDUSTRY	5841.8	5729.3	-1.93%	0.40%

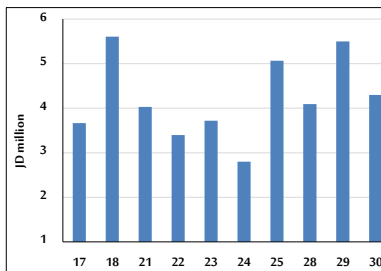
### STOCK PRICE MARKET INDEX WEIGHTED BY FREE FLOAT MARKET CAP. (2012=1000)

	MONDAY 29/07/2024	TUESDAY 30/07/2024	% CHANGE	
			DAY BEFORE	YTD
FIRST MARKET	1353.2	1350.8	-0.18%	-0.60%
SECOND MARKET	840.0	831.4	-1.02%	-3.80%

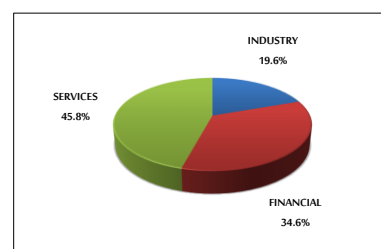
### MARKET CAPITALIZATION (JD)

	16,638,231,810	16,527,395,634	-0.67%	-2.43%
--	----------------	----------------	--------	--------

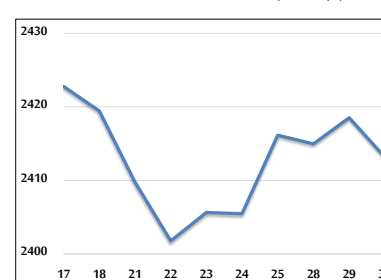
### VALUE TRADED FROM 17/7 TO 30/7/2024



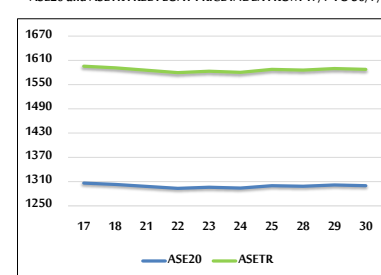
### VALUE TRADED BY SECTOR TUESDAY 30/7/2024



### GENERAL FREE FLOAT PRICE INDEX FROM 17/7 TO 30/7/2024



### ASE20 and ASETR FREE FLOAT PRICE INDEX FROM 17/7 TO 30/7/2024



### STOCK PRICE INDEX FROM 17/7 TO 30/7/2024

