

### Daily Summary for Amman Stock Exchange

VALUE TRADED (JD)

	2023	2024	NET CHANGE	CHANGE (%)
Daily	4,808,744	7,695,966	2,887,222	60.04%
Cumulative (1/7-31/7)	122,559,868	92,555,839	-30,004,029	-24.48%
Cumulative (2/1-31/7)	985,880,587	714,777,386	-271,103,201	-27.50%

NO. OF SHARES TRADED

	2023	2024	NET CHANGE	CHANGE (%)
Daily	3,154,772	5,720,958	2,566,186	81.34%
Cumulative (1/7-31/7)	76,689,837	82,169,904	5,480,067	7.15%
Cumulative (2/1-31/7)	670,200,919	510,477,729	-159,723,190	-23.83%

NO. OF TRANSACTIONS

	2023	2024	NET CHANGE	CHANGE (%)
Daily	2,658	2,521	-137	-5.15%
Cumulative (1/7-31/7)	54,582	52,846	-1,736	-3.18%
Cumulative (2/1-31/7)	430,497	330,105	-100,392	-23.32%

SOME FINANCIAL RATIOS FOR THE ASE (31/7/2024)

SECTOR	P/E	P/BV	DIVIDEND YIELD (%)	TURNOVER (%)
FINANCIAL	8.656	0.746	5.998	0.030
SERVICES	11.996	1.294	5.993	0.331
INDUSTRY	8.022	1.397	8.176	0.041
OVERALL	8.272	0.955	7.099	0.093

STOCK PRICE INDEX WEIGHTED BY FREE FLOAT MARKET CAPITALIZATION (1999=1000)

	TUESDAY 30/07/2024	WEDNESDAY 31/07/2024	% CHANGE	
			DAY BEFORE	YTD
GENERAL	2413.2	2407.1	-0.25%	-0.99%
FINANCIAL	2636.8	2623.5	-0.50%	-3.87%
SERVICES	1688.8	1685.7	-0.18%	2.53%
INDUSTRY	4785.2	4807.8	0.47%	1.89%

STOCK PRICE INDEX WEIGHTED BY FREE FLOAT MARKET CAPITALIZATION ASE20 (2014=1000)

	1299.7	1296.3	-0.26%	-0.96%
--	--------	--------	--------	--------

Total Return Index ASETR (2021=1074)

	1587.5	1583.3	-0.26%	6.37%
--	--------	--------	--------	-------

STOCK PRICE INDEX WEIGHTED BY MARKET CAPITALIZATION (1991=1000)

	TUESDAY 30/07/2024	WEDNESDAY 31/07/2024	% CHANGE	
			DAY BEFORE	YTD
GENERAL	4337.8	4346.2	0.19%	-1.59%
BANKS	6445.5	6418.7	-0.41%	-4.70%
INSURANCE	1361.4	1358.9	-0.18%	5.76%
SERVICES	898.2	891.5	-0.74%	1.46%
INDUSTRY	5729.3	5804.6	1.31%	1.72%

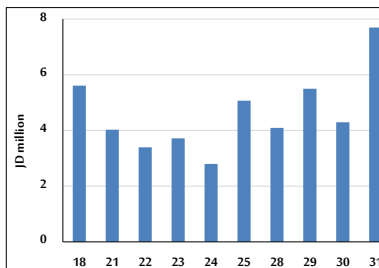
STOCK PRICE MARKET INDEX WEIGHTED BY FREE FLOAT MARKET CAP. (2012=1000)

	TUESDAY 30/07/2024	WEDNESDAY 31/07/2024	% CHANGE	
			DAY BEFORE	YTD
FIRST MARKET	1350.8	1347.5	-0.24%	-0.84%
SECOND MARKET	831.4	828.7	-0.33%	-4.11%

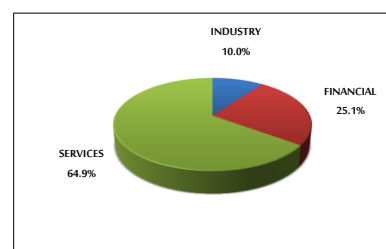
MARKET CAPITALIZATION (JD)

	16,527,395,634	16,551,964,262	0.15%	-2.29%
--	----------------	----------------	-------	--------

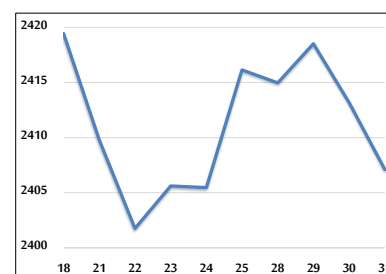
VALUE TRADED FROM 18/7 TO 31/7/2024



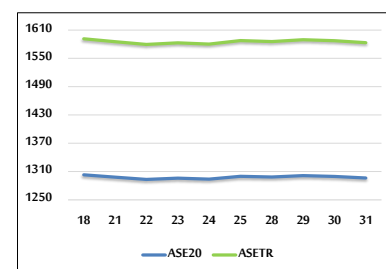
VALUE TRADED BY SECTOR WEDNESDAY 31/7/2024



GENERAL FREE FLOAT PRICE INDEX FROM 18/7 TO 31/7/2024



ASE20 and ASETR FREE FLOAT PRICE INDEX FROM 18/7 TO 31/7/2024



STOCK PRICE INDEX FROM 18/7 TO 31/7/2024

