

## Daily Summary for Amman Stock Exchange

### VALUE TRADED (JD)

	2023	2024	NET CHANGE	CHANGE (%)
Daily	5,313,754	5,242,655	-71,099	-1.34%
Cumulative (1/8-1/8)	5,313,754	5,242,655	-71,099	-1.34%
Cumulative (2/1-1/8)	991,194,341	720,020,041	-271,174,300	-27.36%

### NO. OF SHARES TRADED

	2023	2024	NET CHANGE	CHANGE (%)
Daily	3,765,684	3,762,385	-3,299	-0.09%
Cumulative (1/8-1/8)	3,765,684	3,762,385	-3,299	-0.09%
Cumulative (2/1-1/8)	673,966,603	514,240,114	-159,726,489	-23.70%

### NO. OF TRANSACTIONS

	2023	2024	NET CHANGE	CHANGE (%)
Daily	2,624	2,299	-325	-12.39%
Cumulative (1/8-1/8)	2,624	2,299	-325	-12.39%
Cumulative (2/1-1/8)	433,121	332,404	-100,717	-23.25%

### SOME FINANCIAL RATIOS FOR THE ASE (1/8/2024)

SECTOR	P/E	P/BV	DIVIDEND YIELD (%)	TURNOVER (%)
FINANCIAL	8.749	0.745	6.005	0.028
SERVICES	12.372	1.282	6.051	0.180
INDUSTRY	8.223	1.387	8.231	0.044
OVERALL	8.401	0.951	7.129	0.061

### STOCK PRICE INDEX WEIGHTED BY FREE FLOAT MARKET CAPITALIZATION (1999=1000)

	WEDNESDAY 31/07/2024	THURSDAY 01/08/2024	% CHANGE	
			DAY BEFORE	YTD
GENERAL	2407.1	2392.3	-0.61%	-1.60%
FINANCIAL	2623.5	2618.0	-0.21%	-4.07%
SERVICES	1685.7	1661.8	-1.41%	1.08%
INDUSTRY	4807.8	4770.5	-0.77%	1.10%

### STOCK PRICE INDEX WEIGHTED BY FREE FLOAT MARKET CAPITALIZATION ASE20 (2014=1000)

	1296.3	1287.9	-0.65%	-1.60%
--	--------	--------	--------	--------

### Total Return Index ASETR (2021=1074)

	1583.3	1573.0	-0.65%	5.68%
--	--------	--------	--------	-------

### STOCK PRICE INDEX WEIGHTED BY MARKET CAPITALIZATION (1991=1000)

	WEDNESDAY 31/07/2024	THURSDAY 01/08/2024	% CHANGE	
			DAY BEFORE	YTD
GENERAL	4346.2	4327.4	-0.43%	-2.01%
BANKS	6418.7	6412.9	-0.09%	-4.79%
INSURANCE	1358.9	1355.6	-0.24%	5.50%
SERVICES	891.5	885.0	-0.73%	0.72%
INDUSTRY	5804.6	5758.7	-0.79%	0.91%

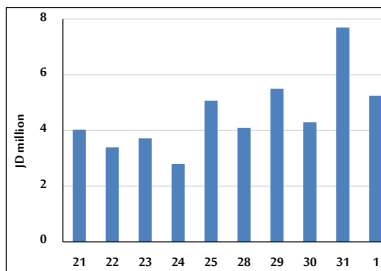
### STOCK PRICE MARKET INDEX WEIGHTED BY FREE FLOAT MARKET CAP. (2012=1000)

	WEDNESDAY 31/07/2024	THURSDAY 01/08/2024	% CHANGE	
			DAY BEFORE	YTD
FIRST MARKET	1347.5	1339.1	-0.62%	-1.46%
SECOND MARKET	828.7	825.5	-0.38%	-4.48%

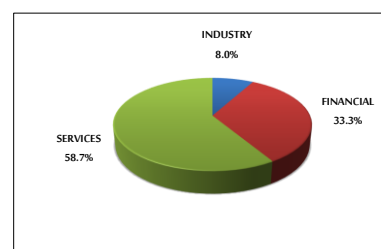
### MARKET CAPITALIZATION (JD)

	16,551,964,262	16,482,302,615	-0.42%	-2.70%
--	----------------	----------------	--------	--------

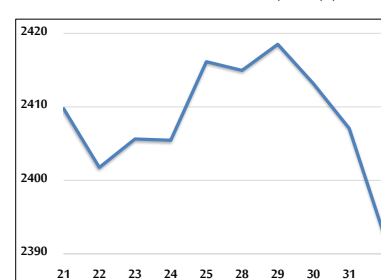
### VALUE TRADED FROM 21/7 TO 1/8/2024



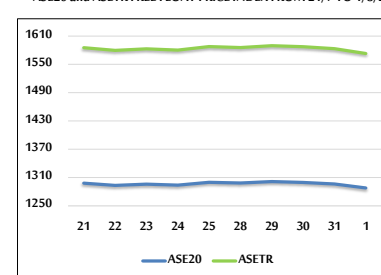
### VALUE TRADED BY SECTOR THURSDAY 1/8/2024



### GENERAL FREE FLOAT PRICE INDEX FROM 21/7 TO 1/8/2024



### ASE20 and ASETR FREE FLOAT PRICE INDEX FROM 21/7 TO 1/8/2024



### STOCK PRICE INDEX FROM 21/7 TO 1/8/2024

