

Daily Summary for Amman Stock Exchange

VALUE TRADED (JD)

	2023	2024	NET CHANGE	CHANGE (%)
Daily	3,739,667	3,885,748	146,081	3.91%
Cumulative (1/8-4/8)	9,053,421	9,128,403	74,982	0.83%
Cumulative (2/1-4/8)	994,934,008	723,905,789	-271,028,219	-27.24%

NO. OF SHARES TRADED

	2023	2024	NET CHANGE	CHANGE (%)
Daily	1,958,976	1,927,877	-31,099	-1.59%
Cumulative (1/8-4/8)	5,724,660	5,690,262	-34,398	-0.60%
Cumulative (2/1-4/8)	675,925,579	516,167,991	-159,757,588	-23.64%

NO. OF TRANSACTIONS

	2023	2024	NET CHANGE	CHANGE (%)
Daily	2,009	2,042	33	1.64%
Cumulative (1/8-4/8)	4,633	4,341	-292	-6.30%
Cumulative (2/1-4/8)	435,130	334,446	-100,684	-23.14%

SOME FINANCIAL RATIOS FOR THE ASE (4/8/2024)

SECTOR	P/E	P/BV	DIVIDEND YIELD (%)	TURNOVER (%)
FINANCIAL	8.713	0.742	6.029	0.027
SERVICES	12.260	1.270	6.106	0.042
INDUSTRY	8.216	1.386	8.237	0.036
OVERALL	8.370	0.948	7.156	0.031

STOCK PRICE INDEX WEIGHTED BY FREE FLOAT MARKET CAPITALIZATION (1999=1000)

	THURSDAY 01/08/2024	SUNDAY 04/08/2024	% CHANGE	
			DAY BEFORE	YTD
GENERAL	2392.3	2380.9	-0.48%	-2.07%
FINANCIAL	2618.0	2606.5	-0.44%	-4.49%
SERVICES	1661.8	1650.3	-0.70%	0.38%
INDUSTRY	4770.5	4752.0	-0.39%	0.71%

STOCK PRICE INDEX WEIGHTED BY FREE FLOAT MARKET CAPITALIZATION ASE20 (2014=1000)

	1287.9	1282.9	-0.39%	-1.98%
--	--------	--------	--------	--------

Total Return Index ASETR (2021=1074)

	1573.0	1566.9	-0.39%	5.27%
--	--------	--------	--------	-------

STOCK PRICE INDEX WEIGHTED BY MARKET CAPITALIZATION (1991=1000)

	THURSDAY 01/08/2024	SUNDAY 04/08/2024	% CHANGE	
			DAY BEFORE	YTD
GENERAL	4327.4	4311.2	-0.37%	-2.38%
BANKS	6412.9	6390.6	-0.35%	-5.12%
INSURANCE	1355.6	1327.8	-2.05%	3.34%
SERVICES	885.0	871.7	-1.50%	-0.79%
INDUSTRY	5758.7	5757.2	-0.03%	0.88%

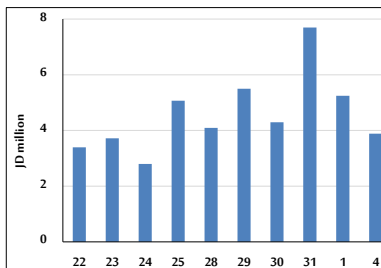
STOCK PRICE MARKET INDEX WEIGHTED BY FREE FLOAT MARKET CAP. (2012=1000)

	THURSDAY 01/08/2024	SUNDAY 04/08/2024	% CHANGE	
			DAY BEFORE	YTD
FIRST MARKET	1339.1	1333.1	-0.45%	-1.90%
SECOND MARKET	825.5	814.2	-1.38%	-5.79%

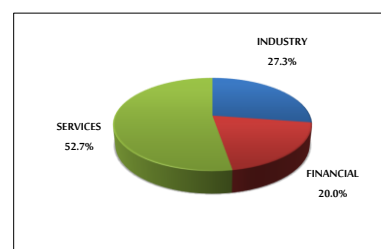
MARKET CAPITALIZATION (JD)

	16,482,302,615	16,420,688,605	-0.37%	-3.06%
--	----------------	----------------	--------	--------

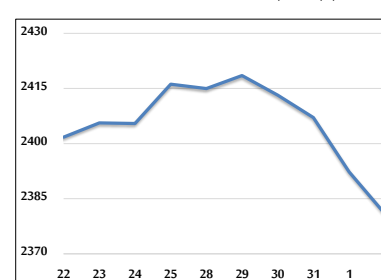
VALUE TRADED FROM 22/7 TO 4/8/2024



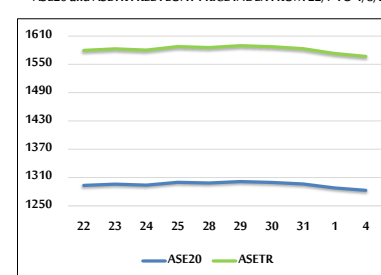
VALUE TRADED BY SECTOR SUNDAY 4/8/2024



GENERAL FREE FLOAT PRICE INDEX FROM 22/7 TO 4/8/2024



ASE20 and ASETR FREE FLOAT PRICE INDEX FROM 22/7 TO 4/8/2024



STOCK PRICE INDEX FROM 22/7 TO 4/8/2024

