

### Daily Summary for Amman Stock Exchange

VALUE TRADED (JD)

	2023	2024	NET CHANGE	CHANGE (%)
Daily	2,465,204	6,924,680	4,459,476	180.90%
Cumulative (1/8-5/8)	11,518,625	16,053,083	4,534,458	39.37%
Cumulative (2/1-5/8)	997,399,212	730,830,469	-266,568,743	-26.73%

NO. OF SHARES TRADED

	2023	2024	NET CHANGE	CHANGE (%)
Daily	2,159,407	4,016,878	1,857,471	86.02%
Cumulative (1/8-5/8)	7,884,067	9,707,140	1,823,073	23.12%
Cumulative (2/1-5/8)	678,084,986	520,184,869	-157,900,117	-23.29%

NO. OF TRANSACTIONS

	2023	2024	NET CHANGE	CHANGE (%)
Daily	1,809	2,146	337	18.63%
Cumulative (1/8-5/8)	6,442	6,487	45	0.70%
Cumulative (2/1-5/8)	436,939	336,592	-100,347	-22.97%

SOME FINANCIAL RATIOS FOR THE ASE (5/8/2024)

SECTOR	P/E	P/BV	DIVIDEND YIELD (%)	TURNOVER (%)
FINANCIAL	8.697	0.741	6.040	0.046
SERVICES	12.210	1.265	6.131	0.150
INDUSTRY	8.192	1.382	8.262	0.026
OVERALL	8.347	0.945	7.176	0.064

STOCK PRICE INDEX WEIGHTED BY FREE FLOAT MARKET CAPITALIZATION (1999=1000)

	SUNDAY 04/08/2024	MONDAY 05/08/2024	% CHANGE	
			DAY BEFORE	YTD
GENERAL	2380.9	2375.5	-0.23%	-2.29%
FINANCIAL	2606.5	2599.3	-0.27%	-4.75%
SERVICES	1650.3	1650.2	0.00%	0.38%
INDUSTRY	4752.0	4743.4	-0.18%	0.52%

STOCK PRICE INDEX WEIGHTED BY FREE FLOAT MARKET CAPITALIZATION ASE20 (2014=1000)

	1282.9	1279.3	-0.28%	-2.25%
--	--------	--------	--------	--------

Total Return Index ASETR (2021=1074)

	1566.9	1562.5	-0.28%	4.98%
--	--------	--------	--------	-------

STOCK PRICE INDEX WEIGHTED BY MARKET CAPITALIZATION (1991=1000)

	SUNDAY 04/08/2024	MONDAY 05/08/2024	% CHANGE	
			DAY BEFORE	YTD
GENERAL	4311.2	4299.2	-0.28%	-2.65%
BANKS	6390.6	6378.6	-0.19%	-5.30%
INSURANCE	1327.8	1327.4	-0.04%	3.30%
SERVICES	871.7	867.2	-0.52%	-1.31%
INDUSTRY	5757.2	5738.9	-0.32%	0.56%

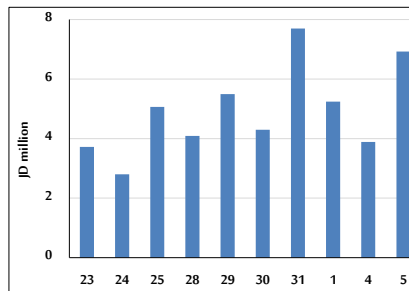
STOCK PRICE MARKET INDEX WEIGHTED BY FREE FLOAT MARKET CAP. (2012=1000)

	SUNDAY 04/08/2024	MONDAY 05/08/2024	% CHANGE	
			DAY BEFORE	YTD
FIRST MARKET	1333.1	1330.2	-0.22%	-2.11%
SECOND MARKET	814.2	814.2	0.00%	-5.80%

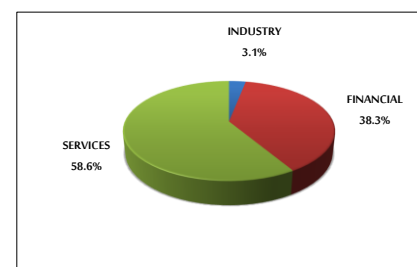
MARKET CAPITALIZATION (JD)

	16,420,688,605	16,426,360,041	0.03%	-3.03%
--	----------------	----------------	-------	--------

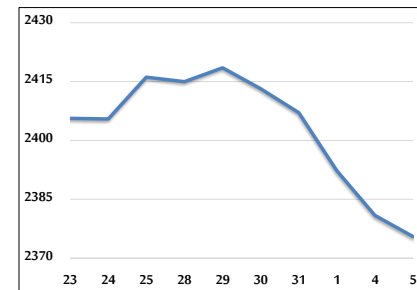
VALUE TRADED FROM 23/7 TO 5/8/2024



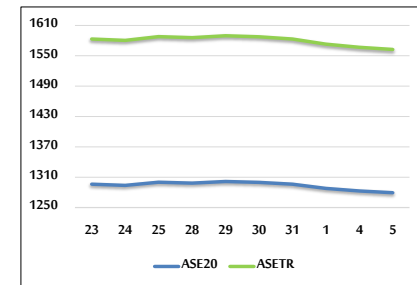
VALUE TRADED BY SECTOR MONDAY 5/8/2024



GENERAL FREE FLOAT PRICE INDEX FROM 23/7 TO 5/8/2024



ASE20 and ASETR FREE FLOAT PRICE INDEX FROM 23/7 TO 5/8/2024



STOCK PRICE INDEX FROM 23/7 TO 5/8/2024

