

Daily Summary for Amman Stock Exchange

VALUE TRADED (JD)

	2023	2024	NET CHANGE	CHANGE (%)
Daily	2,575,216	2,592,955	17,739	0.69%
Cumulative (1/8-11/8)	28,828,038	29,490,843	662,805	2.30%
Cumulative (2/1-11/8)	1,014,708,625	744,268,229	-270,440,396	-26.65%

NO. OF SHARES TRADED

	2023	2024	NET CHANGE	CHANGE (%)
Daily	1,763,912	2,380,933	617,021	34.98%
Cumulative (1/8-11/8)	20,879,841	20,616,677	-263,164	-1.26%
Cumulative (2/1-11/8)	691,080,760	531,094,406	-159,986,354	-23.15%

NO. OF TRANSACTIONS

	2023	2024	NET CHANGE	CHANGE (%)
Daily	1,754	1,836	82	4.68%
Cumulative (1/8-11/8)	14,543	14,384	-159	-1.09%
Cumulative (2/1-11/8)	445,040	344,489	-100,551	-22.59%

SOME FINANCIAL RATIOS FOR THE ASE (11/8/2024)

SECTOR	P/E	P/BV	DIVIDEND YIELD (%)	TURNOVER (%)
FINANCIAL	8.694	0.740	6.042	0.037
SERVICES	12.269	1.271	6.101	0.050
INDUSTRY	8.526	1.412	7.985	0.025
OVERALL	8.431	0.955	7.104	0.038

STOCK PRICE INDEX WEIGHTED BY FREE FLOAT MARKET CAPITALIZATION (1999=1000)

	THURSDAY 08/08/2024	SUNDAY 11/08/2024	% CHANGE	
			DAY BEFORE	YTD
GENERAL	2387.3	2389.8	0.10%	-1.70%
FINANCIAL	2606.5	2604.1	-0.09%	-4.57%
SERVICES	1656.1	1659.0	0.18%	0.91%
INDUSTRY	4795.9	4824.4	0.59%	2.24%

STOCK PRICE INDEX WEIGHTED BY FREE FLOAT MARKET CAPITALIZATION ASE20 (2014=1000)

	1286.1	1287.6	0.12%	-1.62%
--	--------	--------	-------	--------

Total Return Index ASETR (2021=1074)

	1570.8	1572.6	0.12%	5.66%
--	--------	--------	-------	-------

STOCK PRICE INDEX WEIGHTED BY MARKET CAPITALIZATION (1991=1000)

	THURSDAY 08/08/2024	SUNDAY 11/08/2024	% CHANGE	
			DAY BEFORE	YTD
GENERAL	4332.7	4343.0	0.24%	-1.66%
BANKS	6385.5	6370.4	-0.24%	-5.42%
INSURANCE	1325.8	1327.6	0.14%	3.32%
SERVICES	877.7	875.9	-0.21%	-0.32%
INDUSTRY	5826.6	5885.1	1.00%	3.13%

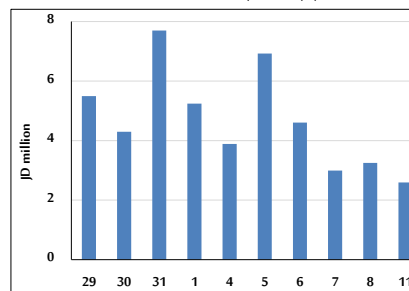
STOCK PRICE MARKET INDEX WEIGHTED BY FREE FLOAT MARKET CAP. (2012=1000)

	THURSDAY 08/08/2024	SUNDAY 11/08/2024	% CHANGE	
			DAY BEFORE	YTD
FIRST MARKET	1336.3	1337.6	0.10%	-1.57%
SECOND MARKET	822.7	823.7	0.11%	-4.70%

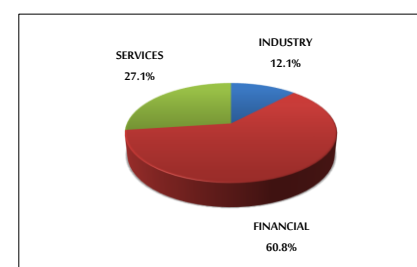
MARKET CAPITALIZATION (JD)

	16,541,344,498	16,577,184,719	0.22%	-2.14%
--	----------------	----------------	-------	--------

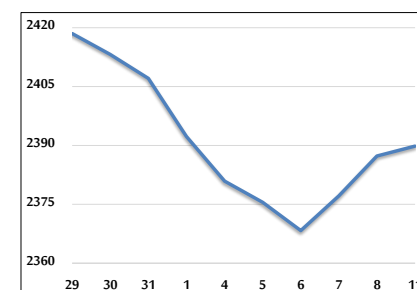
VALUE TRADED FROM 29/7 TO 11/8/2024



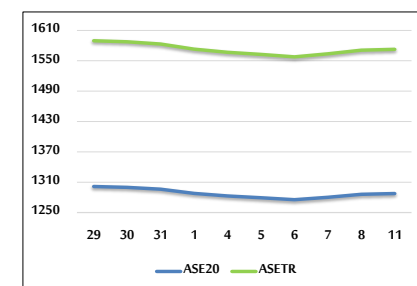
VALUE TRADED BY SECTOR SUNDAY 11/8/2024



GENERAL FREE FLOAT PRICE INDEX FROM 29/7 TO 11/8/2024



ASE20 and ASETR FREE FLOAT PRICE INDEX FROM 29/7 TO 11/8/2024



STOCK PRICE INDEX FROM 29/7 TO 11/8/2024

