

Daily Summary for Amman Stock Exchange

VALUE TRADED (JD)

	2023	2024	NET CHANGE	CHANGE (%)
Daily	2,647,294	2,935,590	288,296	10.89%
Cumulative (1/8-12/8)	31,475,332	32,426,433	951,101	3.02%
Cumulative (2/1-12/8)	1,017,355,919	747,203,819	-270,152,100	-26.55%

NO. OF SHARES TRADED

	2023	2024	NET CHANGE	CHANGE (%)
Daily	1,570,870	1,969,885	399,015	25.40%
Cumulative (1/8-12/8)	22,450,711	22,586,562	135,851	0.61%
Cumulative (2/1-12/8)	692,651,630	533,064,291	-159,587,339	-23.04%

NO. OF TRANSACTIONS

	2023	2024	NET CHANGE	CHANGE (%)
Daily	1,756	2,069	313	17.82%
Cumulative (1/8-12/8)	16,299	16,453	154	0.94%
Cumulative (2/1-12/8)	446,796	346,558	-100,238	-22.43%

SOME FINANCIAL RATIOS FOR THE ASE (12/8/2024)

SECTOR	P/E	P/BV	DIVIDEND YIELD (%)	TURNOVER (%)
FINANCIAL	8.698	0.741	6.040	0.026
SERVICES	12.378	1.282	6.048	0.060
INDUSTRY	8.539	1.414	7.973	0.016
OVERALL	8.450	0.957	7.089	0.032

STOCK PRICE INDEX WEIGHTED BY FREE FLOAT MARKET CAPITALIZATION (1999=1000)

	SUNDAY 11/08/2024	MONDAY 12/08/2024	% CHANGE	
			DAY BEFORE	YTD
GENERAL	2389.8	2394.8	0.21%	-1.50%
FINANCIAL	2604.1	2603.7	-0.02%	-4.59%
SERVICES	1659.0	1672.3	0.80%	1.72%
INDUSTRY	4824.4	4827.3	0.06%	2.30%

STOCK PRICE INDEX WEIGHTED BY FREE FLOAT MARKET CAPITALIZATION ASE20 (2014=1000)

	1287.6	1290.2	0.20%	-1.42%
--	--------	--------	-------	--------

Total Return Index ASETR (2021=1074)

	1572.6	1575.9	0.20%	5.87%
--	--------	--------	-------	-------

STOCK PRICE INDEX WEIGHTED BY MARKET CAPITALIZATION (1991=1000)

	SUNDAY 11/08/2024	MONDAY 12/08/2024	% CHANGE	
			DAY BEFORE	YTD
GENERAL	4343.0	4352.4	0.22%	-1.45%
BANKS	6370.4	6374.0	0.06%	-5.37%
INSURANCE	1327.6	1325.1	-0.19%	3.13%
SERVICES	875.9	883.0	0.81%	0.49%
INDUSTRY	5885.1	5899.7	0.25%	3.38%

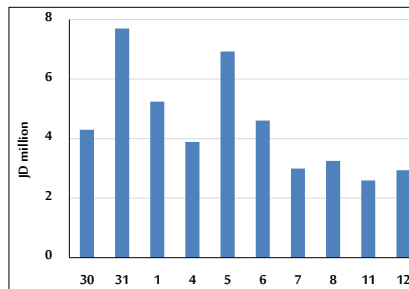
STOCK PRICE MARKET INDEX WEIGHTED BY FREE FLOAT MARKET CAP. (2012=1000)

	SUNDAY 11/08/2024	MONDAY 12/08/2024	% CHANGE	
			DAY BEFORE	YTD
FIRST MARKET	1337.6	1340.3	0.20%	-1.37%
SECOND MARKET	823.7	825.3	0.20%	-4.50%

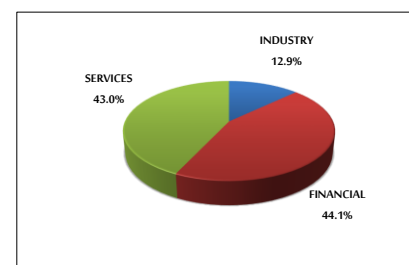
MARKET CAPITALIZATION (JD)

	16,577,184,719	16,612,272,326	0.21%	-1.93%
--	----------------	----------------	-------	--------

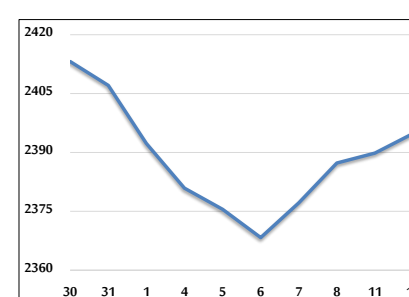
VALUE TRADED FROM 30/7 TO 12/8/2024



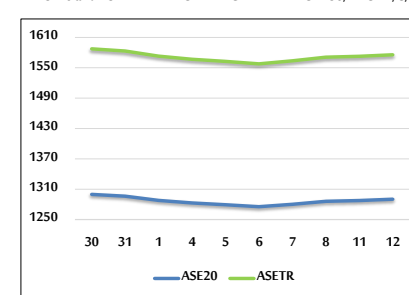
VALUE TRADED BY SECTOR MONDAY 12/8/2024



GENERAL FREE FLOAT PRICE INDEX FROM 30/7 TO 12/8/2024



ASE20 and ASETR FREE FLOAT PRICE INDEX FROM 30/7 TO 12/8/2024



STOCK PRICE INDEX FROM 30/7 TO 12/8/2024

