

### Daily Summary for Amman Stock Exchange

VALUE TRADED (JD)

	2023	2024	NET CHANGE	CHANGE (%)
Daily	2,209,428	5,182,906	2,973,478	134.58%
Cumulative (1/8-14/8)	36,138,934	45,512,240	9,373,306	25.94%
Cumulative (2/1-14/8)	1,022,019,521	760,289,626	-261,729,895	-25.61%

NO. OF SHARES TRADED

	2023	2024	NET CHANGE	CHANGE (%)
Daily	1,842,687	3,919,430	2,076,743	112.70%
Cumulative (1/8-14/8)	25,495,778	30,707,652	5,211,874	20.44%
Cumulative (2/1-14/8)	695,696,697	541,185,381	-154,511,316	-22.21%

NO. OF TRANSACTIONS

	2023	2024	NET CHANGE	CHANGE (%)
Daily	1,612	2,614	1,002	62.16%
Cumulative (1/8-14/8)	19,424	21,181	1,757	9.05%
Cumulative (2/1-14/8)	449,921	351,286	-98,635	-21.92%

SOME FINANCIAL RATIOS FOR THE ASE (14/8/2024)

SECTOR	P/E	P/BV	DIVIDEND YIELD (%)	TURNOVER (%)
FINANCIAL	8.767	0.746	5.997	0.051
SERVICES	12.471	1.292	6.002	0.112
INDUSTRY	8.655	1.434	7.866	0.049
OVERALL	8.540	0.967	7.013	0.063

STOCK PRICE INDEX WEIGHTED BY FREE FLOAT MARKET CAPITALIZATION (1999=1000)

	TUESDAY 13/08/2024	WEDNESDAY 14/08/2024	% CHANGE	
			DAY BEFORE	YTD
GENERAL	2396.1	2414.4	0.76%	-0.69%
FINANCIAL	2604.3	2619.3	0.58%	-4.02%
SERVICES	1675.0	1687.1	0.73%	2.62%
INDUSTRY	4823.2	4873.8	1.05%	3.29%

STOCK PRICE INDEX WEIGHTED BY FREE FLOAT MARKET CAPITALIZATION ASE20 (2014=1000)

	1291.1	1299.8	0.68%	-0.69%
--	--------	--------	-------	--------

Total Return Index ASETR (2021=1074)

	1576.9	1587.6	0.68%	6.66%
--	--------	--------	-------	-------

STOCK PRICE INDEX WEIGHTED BY MARKET CAPITALIZATION (1991=1000)

	TUESDAY 13/08/2024	WEDNESDAY 14/08/2024	% CHANGE	
			DAY BEFORE	YTD
GENERAL	4359.8	4399.1	0.90%	-0.39%
BANKS	6372.2	6416.3	0.69%	-4.74%
INSURANCE	1336.0	1338.6	0.19%	4.17%
SERVICES	882.7	889.9	0.82%	1.29%
INDUSTRY	5929.1	6000.0	1.20%	5.14%

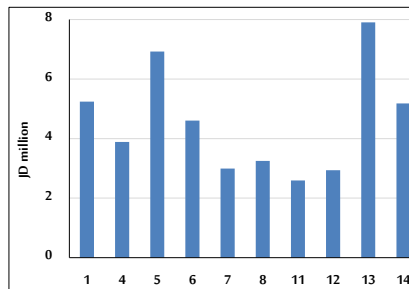
STOCK PRICE MARKET INDEX WEIGHTED BY FREE FLOAT MARKET CAP. (2012=1000)

	TUESDAY 13/08/2024	WEDNESDAY 14/08/2024	% CHANGE	
			DAY BEFORE	YTD
FIRST MARKET	1340.3	1350.0	0.72%	-0.66%
SECOND MARKET	831.4	839.0	0.91%	-2.92%

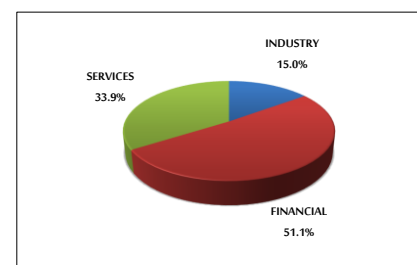
MARKET CAPITALIZATION (JD)

	16,631,475,201	16,767,752,016	0.82%	-1.01%
--	----------------	----------------	-------	--------

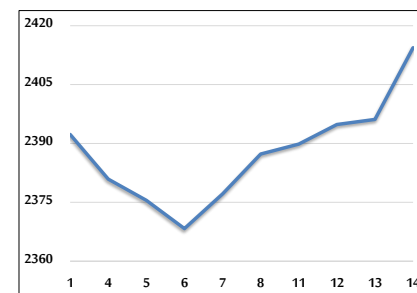
VALUE TRADED FROM 1/8 TO 14/8/2024



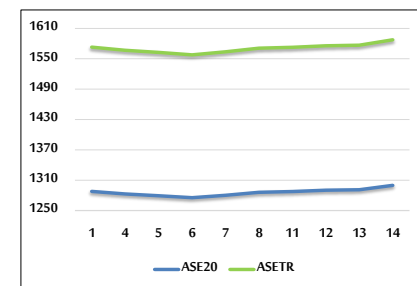
VALUE TRADED BY SECTOR WEDNESDAY 14/8/2024



GENERAL FREE FLOAT PRICE INDEX FROM 1/8 TO 14/8/2024



ASE20 and ASETR FREE FLOAT PRICE INDEX FROM 1/8 TO 14/8/2024



STOCK PRICE INDEX FROM 1/8 TO 14/8/2024

