

### Daily Summary for Amman Stock Exchange

VALUE TRADED (JD)

	2023	2024	NET CHANGE	CHANGE (%)
Daily	3,705,186	4,570,568	865,382	23.36%
Cumulative (1/12-15/12)	51,819,374	40,568,130	-11,251,244	-21.71%
Cumulative (2/1-15/12)	1,409,381,759	1,106,898,599	-302,483,160	-21.46%

NO. OF SHARES TRADED

	2023	2024	NET CHANGE	CHANGE (%)
Daily	3,722,925	3,377,182	-345,743	-9.29%
Cumulative (1/12-15/12)	42,167,838	29,703,144	-12,464,694	-29.56%
Cumulative (2/1-15/12)	1,069,368,088	828,800,492	-240,567,596	-22.50%

NO. OF TRANSACTIONS

	2023	2024	NET CHANGE	CHANGE (%)
Daily	2,670	1,430	-1,240	-46.44%
Cumulative (1/12-15/12)	25,254	19,212	-6,042	-23.92%
Cumulative (2/1-15/12)	659,341	521,244	-138,097	-20.94%

SOME FINANCIAL RATIOS FOR THE ASE (15/12/2024)

SECTOR	P/E	P/BV	DIVIDEND YIELD (%)	TURNOVER (%)
FINANCIAL	8.017	0.744	5.995	0.056
SERVICES	12.599	1.255	6.178	0.065
INDUSTRY	9.343	1.551	7.271	0.026
OVERALL	8.499	0.985	6.780	0.054

STOCK PRICE INDEX WEIGHTED BY FREE FLOAT MARKET CAPITALIZATION (1999=1000)

	THURSDAY 12/12/2024	SUNDAY 15/12/2024	% CHANGE	
			DAY BEFORE	YTD
GENERAL	2418.7	2423.0	0.18%	-0.34%
FINANCIAL	2595.0	2602.5	0.29%	-4.63%
SERVICES	1656.9	1651.2	-0.34%	0.44%
INDUSTRY	5244.4	5272.9	0.54%	11.74%

STOCK PRICE INDEX WEIGHTED BY FREE FLOAT MARKET CAPITALIZATION ASE20 (2014=1000)

	1303.4	1306.3	0.22%	-0.19%
--	--------	--------	-------	--------

Total Return Index ASETR (2021=1074)

	1592.0	1595.5	0.22%	7.19%
--	--------	--------	-------	-------

STOCK PRICE INDEX WEIGHTED BY MARKET CAPITALIZATION (1991=1000)

	THURSDAY 12/12/2024	SUNDAY 15/12/2024	% CHANGE	
			DAY BEFORE	YTD
GENERAL	4478.3	4483.3	0.11%	1.52%
BANKS	6370.3	6373.5	0.05%	-5.38%
INSURANCE	1382.8	1391.6	0.64%	8.30%
SERVICES	851.2	848.8	-0.28%	-3.39%
INDUSTRY	6425.9	6444.3	0.29%	12.93%

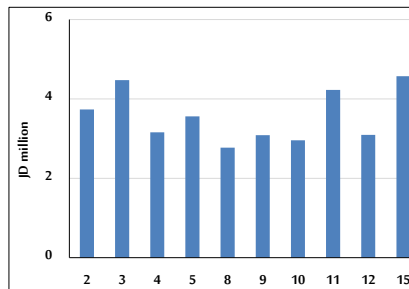
STOCK PRICE MARKET INDEX WEIGHTED BY FREE FLOAT MARKET CAP. (2012=1000)

	THURSDAY 12/12/2024	SUNDAY 15/12/2024	% CHANGE	
			DAY BEFORE	YTD
FIRST MARKET	1355.0	1357.9	0.21%	-0.08%
SECOND MARKET	824.8	825.0	0.03%	-4.54%

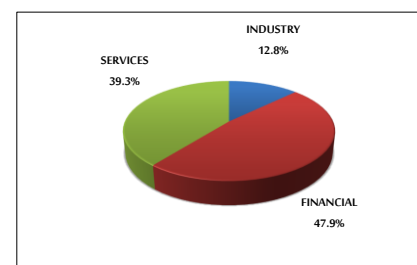
MARKET CAPITALIZATION (JD)

	17,113,637,486	17,137,206,285	0.14%	1.17%
--	----------------	----------------	-------	-------

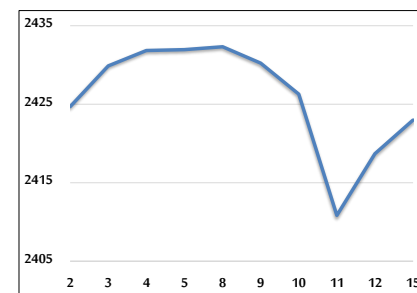
VALUE TRADED FROM 2/12 TO 15/12/2024



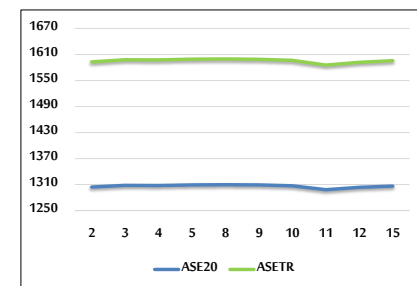
VALUE TRADED BY SECTOR SUNDAY 15/12/2024



GENERAL FREE FLOAT PRICE INDEX FROM 2/12 TO 15/12/2024



ASE20 and ASETR FREE FLOAT PRICE INDEX FROM 2/12 TO 15/12/2024



STOCK PRICE INDEX FROM 2/12 TO 15/12/2024

