

## Daily Summary for Amman Stock Exchange

### VALUE TRADED (JD)

	2022	2023	NET CHANGE	CHANGE (%)
Daily	8,615,465	10,674,823	2,059,358	23.90%
Cumulative (2/1-8/1)	30,512,006	41,308,170	10,796,164	35.38%
Cumulative (2/1-8/1)	30,512,006	41,308,170	10,796,164	35.38%

### NO. OF SHARES TRADED

	2022	2023	NET CHANGE	CHANGE (%)
Daily	5,116,933	4,501,719	-615,214	-12.02%
Cumulative (2/1-8/1)	23,420,092	24,020,706	600,614	2.56%
Cumulative (2/1-8/1)	23,420,092	24,020,706	600,614	2.56%

### NO. OF TRANSACTIONS

	2022	2023	NET CHANGE	CHANGE (%)
Daily	3,693	4,032	339	9.18%
Cumulative (2/1-8/1)	14,569	17,188	2,619	17.98%
Cumulative (2/1-8/1)	14,569	17,188	2,619	17.98%

### SOME FINANCIAL RATIOS FOR THE ASE (8/1/2023)

SECTOR	P/E	P/BV	DIVIDEND YIELD (%)	TURNOVER (%)
FINANCIAL	14.942	0.895	4.608	0.060
SERVICES	19.478	1.495	3.882	0.123
INDUSTRY	13.030	2.881	3.912	0.067
OVERALL	14.040	1.325	4.336	0.074

### STOCK PRICE INDEX WEIGHTED BY FREE FLOAT MARKET CAPITALIZATION (1999=1000)

	THURSDAY 05/01/2023	SUNDAY 08/01/2023	% CHANGE	
			DAY BEFORE	YTD
GENERAL	2584.4	2615.4	1.20%	4.55%
FINANCIAL	2754.5	2762.7	0.30%	2.62%
SERVICES	1790.2	1813.1	1.28%	4.15%
INDUSTRY	5606.9	5806.6	3.56%	9.72%

### STOCK PRICE INDEX WEIGHTED BY FREE FLOAT MARKET CAPITALIZATION ASE20 (2014=1000)

	1399.3	1418.2	1.35%	5.42%
--	--------	--------	-------	-------

### Total Return Index ASETR (2021=1074)

	1487.5	1507.6	1.35%	5.42%
--	--------	--------	-------	-------

### STOCK PRICE INDEX WEIGHTED BY MARKET CAPITALIZATION (1991=1000)

	THURSDAY 05/01/2023	SUNDAY 08/01/2023	% CHANGE	
			DAY BEFORE	YTD
GENERAL	4930.3	5039.3	2.21%	6.53%
BANKS	6884.0	6932.8	0.71%	2.65%
INSURANCE	1310.9	1311.4	0.04%	-1.52%
SERVICES	868.1	869.6	0.17%	2.06%
INDUSTRY	7422.5	7760.0	4.55%	12.76%

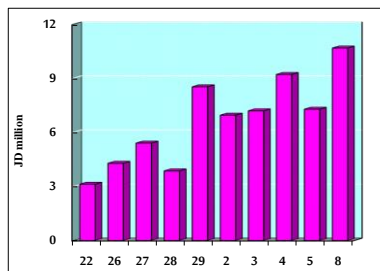
### STOCK PRICE MARKET INDEX WEIGHTED BY FREE FLOAT MARKET CAP. (2012=1000)

	THURSDAY 05/01/2023	SUNDAY 08/01/2023	% CHANGE	
			DAY BEFORE	YTD
FIRST MARKET	1457.5	1476.3	1.29%	4.81%
SECOND MARKET	789.4	786.4	-0.38%	-0.27%

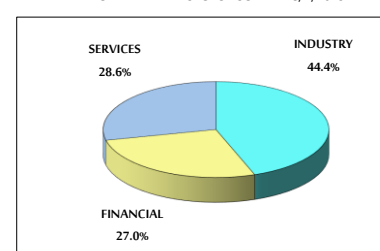
### MARKET CAPITALIZATION (JD)

	18,698,305,388	19,089,540,441	2.09%	6.03%
--	----------------	----------------	-------	-------

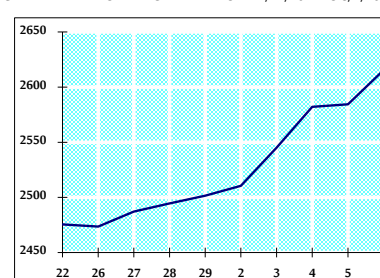
### VALUE TRADED FROM 22/12/2022 TO 8/1/2023



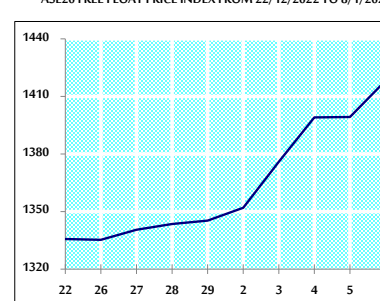
### VALUE TRADED BY SECTOR SUNDAY 8/1/2023



### GENERAL FREE FLOAT PRICE INDEX FROM 22/12/2022 TO 8/1/2023



### ASE20 FREE FLOAT PRICE INDEX FROM 22/12/2022 TO 8/1/2023



### GENERAL PRICE INDEX FROM 22/12/2022 TO 8/1/2023

