

Daily Summary for Amman Stock Exchange

VALUE TRADED (JD)

	2022	2023	NET CHANGE	CHANGE (%)
Daily	5,427,204	9,218,004	3,790,800	69.85%
Cumulative (2/1-9/1)	35,939,210	50,526,174	14,586,964	40.59%
Cumulative (2/1-9/1)	35,939,210	50,526,174	14,586,964	40.59%

NO. OF SHARES TRADED

	2022	2023	NET CHANGE	CHANGE (%)
Daily	3,327,540	4,967,069	1,639,529	49.27%
Cumulative (2/1-9/1)	26,747,632	28,987,775	2,240,143	8.38%
Cumulative (2/1-9/1)	26,747,632	28,987,775	2,240,143	8.38%

NO. OF TRANSACTIONS

	2022	2023	NET CHANGE	CHANGE (%)
Daily	2,579	3,877	1,298	50.33%
Cumulative (2/1-9/1)	17,148	21,065	3,917	22.84%
Cumulative (2/1-9/1)	17,148	21,065	3,917	22.84%

SOME FINANCIAL RATIOS FOR THE ASE (9/1/2023)

SECTOR	P/E	P/BV	DIVIDEND YIELD (%)	TURNOVER (%)
FINANCIAL	14.921	0.894	4.614	0.067
SERVICES	19.498	1.496	3.878	0.122
INDUSTRY	13.117	2.900	3.886	0.094
OVERALL	14.073	1.328	4.326	0.082

STOCK PRICE INDEX WEIGHTED BY FREE FLOAT MARKET CAPITALIZATION (1999=1000)

	SUNDAY 08/01/2023	MONDAY 09/01/2023	% CHANGE	
			DAY BEFORE	YTD
GENERAL	2615.4	2621.6	0.24%	4.80%
FINANCIAL	2762.7	2762.4	-0.01%	2.61%
SERVICES	1813.1	1823.6	0.58%	4.76%
INDUSTRY	5806.6	5833.1	0.46%	10.22%

STOCK PRICE INDEX WEIGHTED BY FREE FLOAT MARKET CAPITALIZATION ASE20 (2014=1000)

	1418.2	1422.6	0.31%	5.74%
--	--------	--------	-------	-------

Total Return Index ASETR (2021=1074)

	1507.6	1512.3	0.31%	5.74%
--	--------	--------	-------	-------

STOCK PRICE INDEX WEIGHTED BY MARKET CAPITALIZATION (1991=1000)

	SUNDAY 08/01/2023	MONDAY 09/01/2023	% CHANGE	
			DAY BEFORE	YTD
GENERAL	5039.3	5051.3	0.24%	6.78%
BANKS	6932.8	6919.3	-0.19%	2.45%
INSURANCE	1311.4	1306.3	-0.39%	-1.91%
SERVICES	869.6	872.3	0.31%	2.37%
INDUSTRY	7760.0	7813.4	0.69%	13.53%

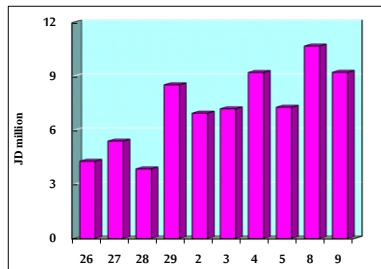
STOCK PRICE MARKET INDEX WEIGHTED BY FREE FLOAT MARKET CAP. (2012=1000)

	SUNDAY 08/01/2023	MONDAY 09/01/2023	% CHANGE	
			DAY BEFORE	YTD
FIRST MARKET	1476.3	1479.9	0.25%	5.07%
SECOND MARKET	786.4	787.5	0.14%	-0.13%

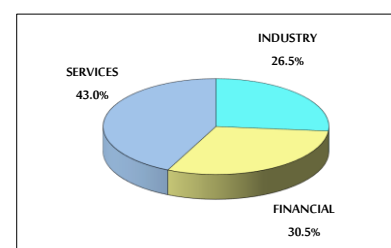
MARKET CAPITALIZATION (JD)

	19,089,540,441	19,129,329,759	0.21%	6.25%
--	----------------	----------------	-------	-------

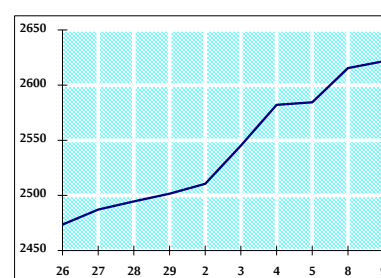
VALUE TRADED FROM 26/12/2022 TO 9/1/2023



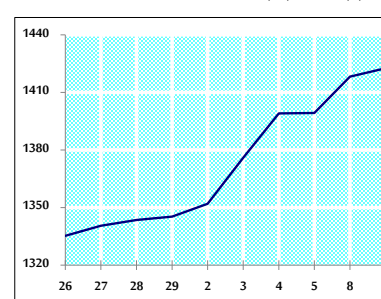
VALUE TRADED BY SECTOR MONDAY 9/1/2023



GENERAL FREE FLOAT PRICE INDEX FROM 26/12/2022 TO 9/1/2023



ASE20 FREE FLOAT PRICE INDEX FROM 26/12/2022 TO 9/1/2023



GENERAL PRICE INDEX FROM 26/12/2022 TO 9/1/2023

