

Daily Summary for Amman Stock Exchange

VALUE TRADED (JD)

	2022	2023	NET CHANGE	CHANGE (%)
Daily	5,912,618	6,900,784	988,166	16.71%
Cumulative (2/1-11/1)	45,594,761	65,118,228	19,523,467	42.82%
Cumulative (2/1-11/1)	45,594,761	65,118,228	19,523,467	42.82%

NO. OF SHARES TRADED

	2022	2023	NET CHANGE	CHANGE (%)
Daily	4,296,880	4,311,149	14,269	0.33%
Cumulative (2/1-11/1)	33,788,590	38,014,852	4,226,262	12.51%
Cumulative (2/1-11/1)	33,788,590	38,014,852	4,226,262	12.51%

NO. OF TRANSACTIONS

	2022	2023	NET CHANGE	CHANGE (%)
Daily	3,566	3,323	-243	-6.81%
Cumulative (2/1-11/1)	23,255	28,211	4,956	21.31%
Cumulative (2/1-11/1)	23,255	28,211	4,956	21.31%

SOME FINANCIAL RATIOS FOR THE ASE (11/1/2023)

SECTOR	P/E	P/BV	DIVIDEND YIELD (%)	TURNOVER (%)
FINANCIAL	14.900	0.893	4.621	0.056
SERVICES	19.494	1.496	3.879	0.131
INDUSTRY	13.358	2.954	3.816	0.051
OVERALL	14.171	1.338	4.296	0.071

STOCK PRICE INDEX WEIGHTED BY FREE FLOAT MARKET CAPITALIZATION (1999=1000)

	TUESDAY 10/01/2023	WEDNESDAY 11/01/2023	% CHANGE	
			DAY BEFORE	YTD
GENERAL	2618.0	2625.2	0.27%	4.94%
FINANCIAL	2753.0	2755.2	0.08%	2.34%
SERVICES	1829.9	1818.3	-0.63%	4.45%
INDUSTRY	5824.5	5937.1	1.93%	12.18%

STOCK PRICE INDEX WEIGHTED BY FREE FLOAT MARKET CAPITALIZATION ASE20 (2014=1000)

	1420.0	1424.1	0.28%	5.85%
--	--------	--------	-------	-------

Total Return Index ASETR (2021=1074)

	1509.6	1513.9	0.28%	5.85%
--	--------	--------	-------	-------

STOCK PRICE INDEX WEIGHTED BY MARKET CAPITALIZATION (1991=1000)

	TUESDAY 10/01/2023	WEDNESDAY 11/01/2023	% CHANGE	
			DAY BEFORE	YTD
GENERAL	5039.0	5086.2	0.94%	7.52%
BANKS	6888.4	6899.9	0.17%	2.17%
INSURANCE	1305.3	1307.7	0.18%	-1.80%
SERVICES	874.3	876.4	0.24%	2.85%
INDUSTRY	7800.4	7953.8	1.97%	15.57%

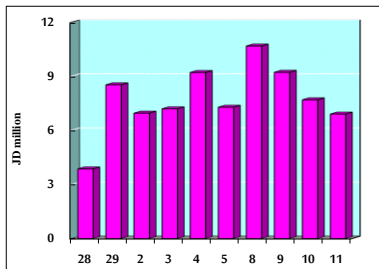
STOCK PRICE MARKET INDEX WEIGHTED BY FREE FLOAT MARKET CAP. (2012=1000)

	TUESDAY 10/01/2023	WEDNESDAY 11/01/2023	% CHANGE	
			DAY BEFORE	YTD
FIRST MARKET	1477.1	1480.7	0.24%	5.12%
SECOND MARKET	790.1	792.5	0.30%	0.50%

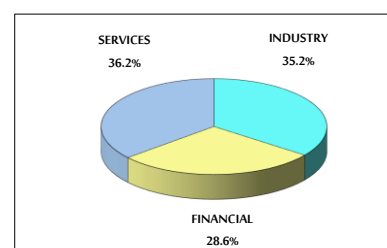
MARKET CAPITALIZATION (JD)

	19,085,057,768	19,252,960,832	0.88%	6.94%
--	----------------	----------------	-------	-------

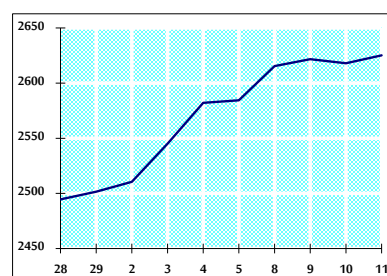
VALUE TRADED FROM 28/12/2022 TO 11/1/2023



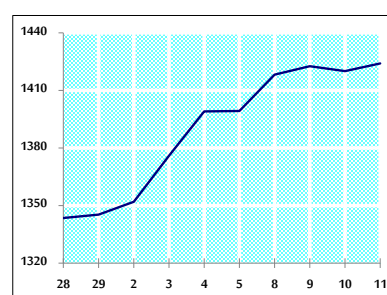
VALUE TRADED BY SECTOR WEDNESDAY 11/1/2023



GENERAL FREE FLOAT PRICE INDEX FROM 28/12/2022 TO 11/1/2023



ASE20 FREE FLOAT PRICE INDEX FROM 28/12/2022 TO 11/1/2023



GENERAL PRICE INDEX FROM 28/12/2022 TO 11/1/2023

