

Daily Summary for Amman Stock Exchange

VALUE TRADED (JD)

	2022	2023	NET CHANGE	CHANGE (%)
Daily	5,399,312	10,303,342	4,904,030	90.83%
Cumulative (2/1-17/1)	69,097,308	106,310,962	37,213,654	53.86%
Cumulative (2/1-17/1)	69,097,308	106,310,962	37,213,654	53.86%

NO. OF SHARES TRADED

	2022	2023	NET CHANGE	CHANGE (%)
Daily	4,197,272	5,934,623	1,737,351	41.39%
Cumulative (2/1-17/1)	51,213,962	60,031,874	8,817,912	17.22%
Cumulative (2/1-17/1)	51,213,962	60,031,874	8,817,912	17.22%

NO. OF TRANSACTIONS

	2022	2023	NET CHANGE	CHANGE (%)
Daily	2,667	4,066	1,399	52.46%
Cumulative (2/1-17/1)	35,342	44,270	8,928	25.26%
Cumulative (2/1-17/1)	35,342	44,270	8,928	25.26%

SOME FINANCIAL RATIOS FOR THE ASE (17/1/2023)

SECTOR	P/E	P/BV	DIVIDEND YIELD (%)	TURNOVER (%)
FINANCIAL	14.792	0.886	4.679	0.064
SERVICES	20.444	1.569	3.699	0.172
INDUSTRY	13.326	2.946	3.825	0.165
OVERALL	14.208	1.341	4.297	0.097

STOCK PRICE INDEX WEIGHTED BY FREE FLOAT MARKET CAPITALIZATION (1999=1000)

	MONDAY 16/01/2023	TUESDAY 17/01/2023	% CHANGE	
			DAY BEFORE	YTD
GENERAL	2652.9	2652.2	-0.03%	6.02%
FINANCIAL	2744.5	2745.8	0.05%	1.99%
SERVICES	1900.5	1903.6	0.16%	9.35%
INDUSTRY	5978.8	5949.7	-0.49%	12.42%

STOCK PRICE INDEX WEIGHTED BY FREE FLOAT MARKET CAPITALIZATION ASE20 (2014=1000)

	1440.3	1440.3	0.00%	7.06%
--	--------	--------	-------	-------

Total Return Index ASETR (2021=1074)

	1531.1	1531.1	0.00%	7.06%
--	--------	--------	-------	-------

STOCK PRICE INDEX WEIGHTED BY MARKET CAPITALIZATION (1991=1000)

	MONDAY 16/01/2023	TUESDAY 17/01/2023	% CHANGE	
			DAY BEFORE	YTD
GENERAL	5114.4	5099.5	-0.29%	7.80%
BANKS	6844.8	6834.7	-0.15%	1.20%
INSURANCE	1328.7	1324.4	-0.33%	-0.55%
SERVICES	919.6	918.3	-0.15%	7.77%
INDUSTRY	8007.9	7969.0	-0.49%	15.79%

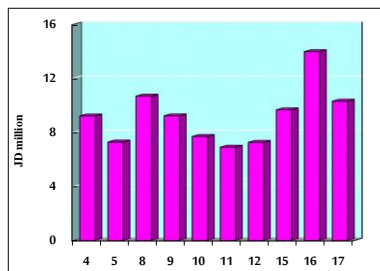
STOCK PRICE MARKET INDEX WEIGHTED BY FREE FLOAT MARKET CAP. (2012=1000)

	MONDAY 16/01/2023	TUESDAY 17/01/2023	% CHANGE	
			DAY BEFORE	YTD
FIRST MARKET	1497.8	1498.3	0.04%	6.37%
SECOND MARKET	793.1	789.1	-0.51%	0.07%

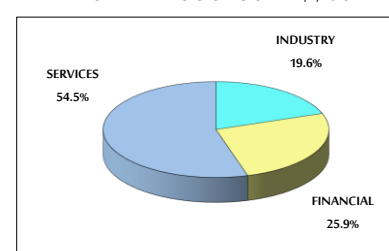
MARKET CAPITALIZATION (JD)

	19,352,301,699	19,298,083,527	-0.28%	7.19%
--	----------------	----------------	--------	-------

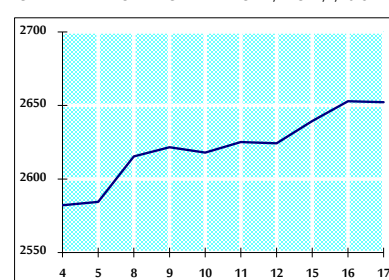
VALUE TRADED FROM 4/1 TO 17/1/2023



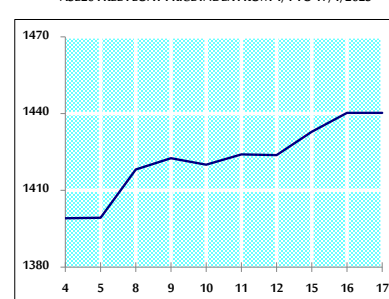
VALUE TRADED BY SECTOR TUESDAY 17/1/2023



GENERAL FREE FLOAT PRICE INDEX FROM 4/1 TO 17/1/2023



ASE20 FREE FLOAT PRICE INDEX FROM 4/1 TO 17/1/2023



GENERAL PRICE INDEX FROM 4/1 TO 17/1/2023

