

Daily Summary for Amman Stock Exchange

VALUE TRADED (JD)

	2022	2023	NET CHANGE	CHANGE (%)
Daily	3,621,319	6,206,149	2,584,830	71.38%
Cumulative (1/3-5/3)	15,030,247	18,693,215	3,662,968	24.37%
Cumulative (2/1-5/3)	241,450,925	392,767,851	151,316,926	62.67%

NO. OF SHARES TRADED

	2022	2023	NET CHANGE	CHANGE (%)
Daily	2,571,159	6,318,575	3,747,416	145.75%
Cumulative (1/3-5/3)	13,192,284	17,533,554	4,341,270	32.91%
Cumulative (2/1-5/3)	189,029,179	242,477,768	53,448,589	28.28%

NO. OF TRANSACTIONS

	2022	2023	NET CHANGE	CHANGE (%)
Daily	1,734	3,085	1,351	77.91%
Cumulative (1/3-5/3)	6,464	9,109	2,645	40.92%
Cumulative (2/1-5/3)	118,039	162,524	44,485	37.69%

SOME FINANCIAL RATIOS FOR THE ASE (5/3/2023)

SECTOR	P/E	P/BV	DIVIDEND YIELD (%)	TURNOVER (%)
FINANCIAL	10.893	0.849	5.315	0.059
SERVICES	10.096	1.545	3.734	0.065
INDUSTRY	5.742	3.035	3.682	0.459
OVERALL	7.646	1.311	4.542	0.103

STOCK PRICE INDEX WEIGHTED BY FREE FLOAT MARKET CAPITALIZATION (1999=1000)

	THURSDAY 02/03/2023	SUNDAY 05/03/2023	% CHANGE	
			DAY BEFORE	YTD
GENERAL	2673.2	2674.8	0.06%	6.92%
FINANCIAL	2793.4	2794.4	0.04%	3.80%
SERVICES	1844.9	1847.4	0.14%	6.12%
INDUSTRY	6116.7	6118.2	0.02%	15.61%

STOCK PRICE INDEX WEIGHTED BY FREE FLOAT MARKET CAPITALIZATION ASE20 (2014=1000)

	1456.5	1457.3	0.05%	8.32%
--	--------	--------	-------	-------

Total Return Index ASETR (2021=1074)

	1548.4	1549.2	0.05%	8.32%
--	--------	--------	-------	-------

STOCK PRICE INDEX WEIGHTED BY MARKET CAPITALIZATION (1991=1000)

	THURSDAY 02/03/2023	SUNDAY 05/03/2023	% CHANGE	
			DAY BEFORE	YTD
GENERAL	5196.1	5192.8	-0.06%	9.78%
BANKS	6890.3	6896.7	0.09%	2.12%
INSURANCE	1317.5	1318.7	0.09%	-0.98%
SERVICES	934.6	929.9	-0.50%	9.14%
INDUSTRY	8218.0	8209.8	-0.10%	19.29%

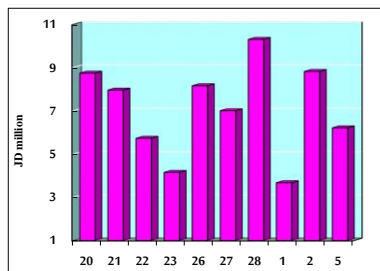
STOCK PRICE MARKET INDEX WEIGHTED BY FREE FLOAT MARKET CAP. (2012=1000)

	THURSDAY 02/03/2023	SUNDAY 05/03/2023	% CHANGE	
			DAY BEFORE	YTD
FIRST MARKET	1510.2	1511.4	0.07%	7.30%
SECOND MARKET	794.9	794.1	-0.10%	0.71%

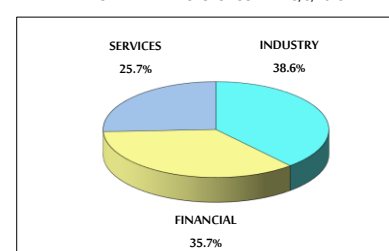
MARKET CAPITALIZATION (JD)

	19,642,985,478	19,631,151,260	-0.06%	9.04%
--	----------------	----------------	--------	-------

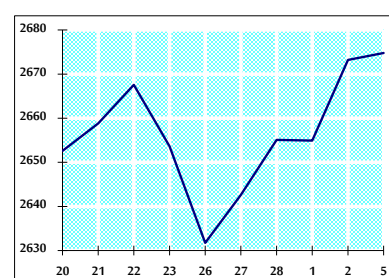
VALUE TRADED FROM 20/2 TO 5/3/2023



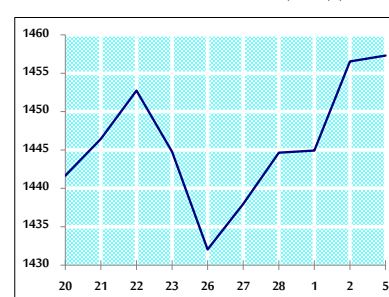
VALUE TRADED BY SECTOR SUNDAY 5/3/2023



GENERAL FREE FLOAT PRICE INDEX FROM 20/2 TO 5/3/2023



ASE20 FREE FLOAT PRICE INDEX FROM 20/2 TO 5/3/2023



GENERAL PRICE INDEX FROM 20/2 TO 5/3/2023

