

Daily Summary for Amman Stock Exchange

VALUE TRADED (JD)

	2022	2023	NET CHANGE	CHANGE (%)
Daily	7,455,514	4,461,951	-2,993,563	-40.15%
Cumulative (1/3-7/3)	26,530,564	29,966,814	3,436,250	12.95%
Cumulative (2/1-7/3)	252,951,242	404,041,450	151,090,208	59.73%

NO. OF SHARES TRADED

	2022	2023	NET CHANGE	CHANGE (%)
Daily	4,712,455	4,148,950	-563,505	-11.96%
Cumulative (1/3-7/3)	21,011,170	26,630,916	5,619,746	26.75%
Cumulative (2/1-7/3)	196,848,065	251,575,130	54,727,065	27.80%

NO. OF TRANSACTIONS

	2022	2023	NET CHANGE	CHANGE (%)
Daily	3,328	2,635	-693	-20.82%
Cumulative (1/3-7/3)	12,026	15,027	3,001	24.95%
Cumulative (2/1-7/3)	123,601	168,442	44,841	36.28%

SOME FINANCIAL RATIOS FOR THE ASE (7/3/2023)

SECTOR	P/E	P/BV	DIVIDEND YIELD (%)	TURNOVER (%)
FINANCIAL	10.903	0.850	5.310	0.071
SERVICES	10.126	1.545	4.050	0.035
INDUSTRY	5.755	3.038	3.678	0.111
OVERALL	7.660	1.313	4.580	0.068

STOCK PRICE INDEX WEIGHTED BY FREE FLOAT MARKET CAPITALIZATION (1999=1000)

	MONDAY 06/03/2023	TUESDAY 07/03/2023	% CHANGE	
			DAY BEFORE	YTD
GENERAL	2683.6	2683.9	0.01%	7.29%
FINANCIAL	2795.7	2801.9	0.22%	4.07%
SERVICES	1867.4	1858.1	-0.50%	6.74%
INDUSTRY	6125.3	6124.8	-0.01%	15.73%

STOCK PRICE INDEX WEIGHTED BY FREE FLOAT MARKET CAPITALIZATION ASE20 (2014=1000)

	1462.1	1462.6	0.04%	8.72%
--	--------	--------	-------	-------

Total Return Index ASETR (2021=1074)

	1554.3	1554.8	0.04%	8.72%
--	--------	--------	-------	-------

STOCK PRICE INDEX WEIGHTED BY MARKET CAPITALIZATION (1991=1000)

	MONDAY 06/03/2023	TUESDAY 07/03/2023	% CHANGE	
			DAY BEFORE	YTD
GENERAL	5194.7	5202.2	0.14%	9.97%
BANKS	6892.0	6901.5	0.14%	2.19%
INSURANCE	1315.6	1319.7	0.31%	-0.90%
SERVICES	926.7	931.1	0.48%	9.28%
INDUSTRY	8231.1	8234.9	0.05%	19.66%

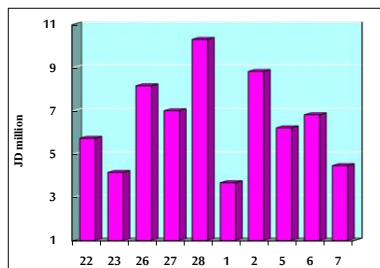
STOCK PRICE MARKET INDEX WEIGHTED BY FREE FLOAT MARKET CAP. (2012=1000)

	MONDAY 06/03/2023	TUESDAY 07/03/2023	% CHANGE	
			DAY BEFORE	YTD
FIRST MARKET	1516.4	1516.0	-0.02%	7.63%
SECOND MARKET	794.2	797.7	0.45%	1.17%

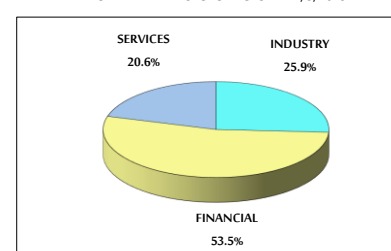
MARKET CAPITALIZATION (JD)

	19,637,330,227	19,663,731,793	0.13%	9.22%
--	----------------	----------------	-------	-------

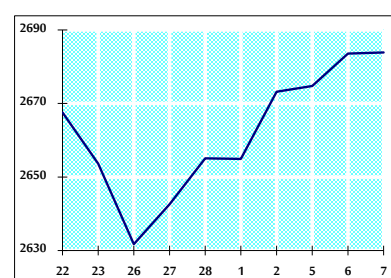
VALUE TRADED FROM 22/2 TO 7/3/2023



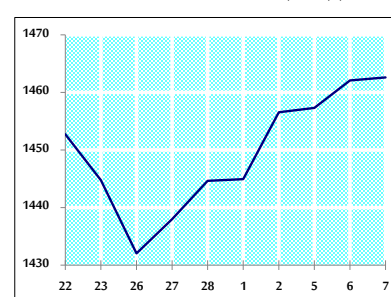
VALUE TRADED BY SECTOR TUESDAY 7/3/2023



GENERAL FREE FLOAT PRICE INDEX FROM 22/2 TO 7/3/2023



ASE20 FREE FLOAT PRICE INDEX FROM 22/2 TO 7/3/2023



GENERAL PRICE INDEX FROM 22/2 TO 7/3/2023

