

Daily Summary for Amman Stock Exchange

VALUE TRADED (JD)

	2022	2023	NET CHANGE	CHANGE (%)
Daily	7,060,742	7,362,473	301,731	4.27%
Cumulative (1/3-8/3)	33,591,306	37,329,287	3,737,981	11.13%
Cumulative (2/1-8/3)	260,011,984	411,403,923	151,391,939	58.22%

NO. OF SHARES TRADED

	2022	2023	NET CHANGE	CHANGE (%)
Daily	3,977,247	5,508,174	1,530,927	38.49%
Cumulative (1/3-8/3)	24,988,417	32,139,090	7,150,673	28.62%
Cumulative (2/1-8/3)	200,825,312	257,083,304	56,257,992	28.01%

NO. OF TRANSACTIONS

	2022	2023	NET CHANGE	CHANGE (%)
Daily	2,988	3,212	224	7.50%
Cumulative (1/3-8/3)	15,014	18,239	3,225	21.48%
Cumulative (2/1-8/3)	126,589	171,654	45,065	35.60%

SOME FINANCIAL RATIOS FOR THE ASE (8/3/2023)

SECTOR	P/E	P/BV	DIVIDEND YIELD (%)	TURNOVER (%)
FINANCIAL	10.894	0.849	5.315	0.090
SERVICES	10.122	1.481	4.779	0.110
INDUSTRY	5.805	2.560	2.379	0.055
OVERALL	7.684	1.265	4.140	0.090

STOCK PRICE INDEX WEIGHTED BY FREE FLOAT MARKET CAPITALIZATION (1999=1000)

	TUESDAY 07/03/2023	WEDNESDAY 08/03/2023	% CHANGE	
			DAY BEFORE	YTD
GENERAL	2683.9	2685.2	0.05%	7.34%
FINANCIAL	2801.9	2799.6	-0.08%	3.99%
SERVICES	1858.1	1852.7	-0.29%	6.43%
INDUSTRY	6124.8	6174.5	0.81%	16.67%

STOCK PRICE INDEX WEIGHTED BY FREE FLOAT MARKET CAPITALIZATION ASE20 (2014=1000)

	1462.6	1463.3	0.05%	8.77%
--	--------	--------	-------	-------

Total Return Index ASETR (2021=1074)

	1554.8	1555.5	0.05%	8.77%
--	--------	--------	-------	-------

STOCK PRICE INDEX WEIGHTED BY MARKET CAPITALIZATION (1991=1000)

	TUESDAY 07/03/2023	WEDNESDAY 08/03/2023	% CHANGE	
			DAY BEFORE	YTD
GENERAL	5202.2	5218.1	0.31%	10.31%
BANKS	6901.5	6895.9	-0.08%	2.11%
INSURANCE	1319.7	1307.3	-0.94%	-1.83%
SERVICES	931.1	933.4	0.24%	9.54%
INDUSTRY	8234.9	8296.8	0.75%	20.56%

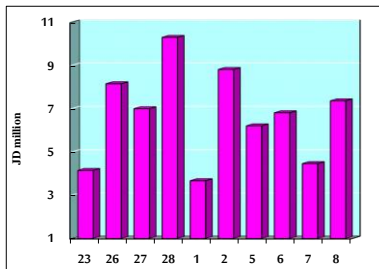
STOCK PRICE MARKET INDEX WEIGHTED BY FREE FLOAT MARKET CAP. (2012=1000)

	TUESDAY 07/03/2023	WEDNESDAY 08/03/2023	% CHANGE	
			DAY BEFORE	YTD
FIRST MARKET	1516.0	1517.0	0.06%	7.69%
SECOND MARKET	797.7	798.8	0.14%	1.30%

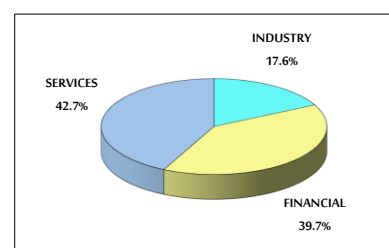
MARKET CAPITALIZATION (JD)

	19,663,731,793	19,720,479,012	0.29%	9.54%
--	----------------	----------------	-------	-------

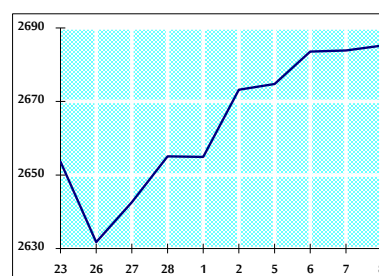
VALUE TRADED FROM 23/2 TO 8/3/2023



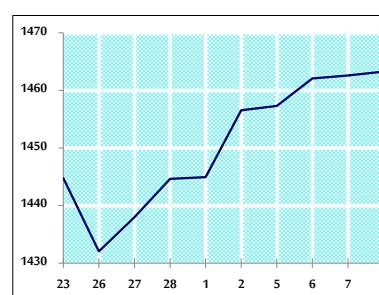
VALUE TRADED BY SECTOR WEDNESDAY 8/3/2023



GENERAL FREE FLOAT PRICE INDEX FROM 23/2 TO 8/3/2023



ASE20 FREE FLOAT PRICE INDEX FROM 23/2 TO 8/3/2023



GENERAL PRICE INDEX FROM 23/2 TO 8/3/2023

