

Daily Summary for Amman Stock Exchange

VALUE TRADED (JD)

	2022	2023	NET CHANGE	CHANGE (%)
Daily	9,247,062	5,325,949	-3,921,113	-42.40%
Cumulative (1/3-9/3)	42,838,368	42,655,236	-183,132	-0.43%
Cumulative (2/1-9/3)	269,259,046	416,729,872	147,470,826	54.77%

NO. OF SHARES TRADED

	2022	2023	NET CHANGE	CHANGE (%)
Daily	5,615,450	2,993,296	-2,622,154	-46.70%
Cumulative (1/3-9/3)	30,603,867	35,132,386	4,528,519	14.80%
Cumulative (2/1-9/3)	206,440,762	260,076,600	53,635,838	25.98%

NO. OF TRANSACTIONS

	2022	2023	NET CHANGE	CHANGE (%)
Daily	3,055	2,552	-503	-16.46%
Cumulative (1/3-9/3)	18,069	20,791	2,722	15.06%
Cumulative (2/1-9/3)	129,644	174,206	44,562	34.37%

SOME FINANCIAL RATIOS FOR THE ASE (9/3/2023)

SECTOR	P/E	P/BV	DIVIDEND YIELD (%)	TURNOVER (%)
FINANCIAL	10.925	0.852	5.309	0.043
SERVICES	10.073	1.474	4.802	0.058
INDUSTRY	5.965	2.630	2.315	0.071
OVERALL	7.779	1.281	4.094	0.049

STOCK PRICE INDEX WEIGHTED BY FREE FLOAT MARKET CAPITALIZATION (1999=1000)

	WEDNESDAY 08/03/2023	THURSDAY 09/03/2023	% CHANGE	
			DAY BEFORE	YTD
GENERAL	2685.2	2702.8	0.66%	8.04%
FINANCIAL	2799.6	2808.6	0.32%	4.32%
SERVICES	1852.7	1848.0	-0.25%	6.16%
INDUSTRY	6174.5	6330.1	2.52%	19.61%

STOCK PRICE INDEX WEIGHTED BY FREE FLOAT MARKET CAPITALIZATION ASE20 (2014=1000)

	1463.3	1474.7	0.78%	9.62%
--	--------	--------	-------	-------

Total Return Index ASETR (2021=1074)

	1555.5	1567.7	0.78%	9.62%
--	--------	--------	-------	-------

STOCK PRICE INDEX WEIGHTED BY MARKET CAPITALIZATION (1991=1000)

	WEDNESDAY 08/03/2023	THURSDAY 09/03/2023	% CHANGE	
			DAY BEFORE	YTD
GENERAL	5218.1	5282.6	1.24%	11.67%
BANKS	6895.9	6919.0	0.34%	2.45%
INSURANCE	1307.3	1310.5	0.25%	-1.59%
SERVICES	933.4	927.8	-0.60%	8.89%
INDUSTRY	8296.8	8519.1	2.68%	23.79%

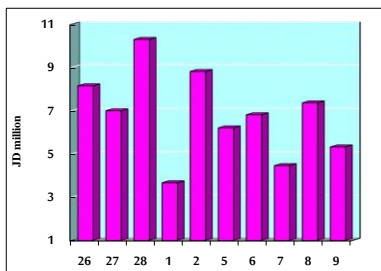
STOCK PRICE MARKET INDEX WEIGHTED BY FREE FLOAT MARKET CAP. (2012=1000)

	WEDNESDAY 08/03/2023	THURSDAY 09/03/2023	% CHANGE	
			DAY BEFORE	YTD
FIRST MARKET	1517.0	1527.9	0.72%	8.47%
SECOND MARKET	798.8	796.6	-0.28%	1.02%

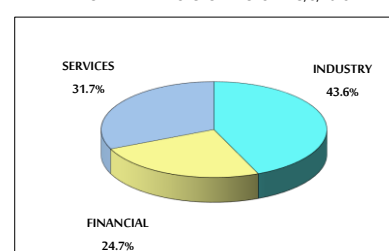
MARKET CAPITALIZATION (JD)

	19,720,479,012	19,951,314,495	1.17%	10.82%
--	----------------	----------------	-------	--------

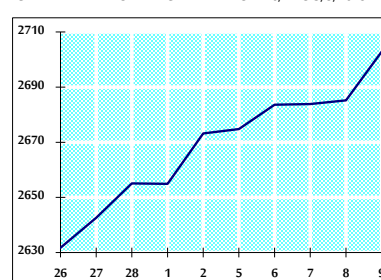
VALUE TRADED FROM 26/2 TO 9/3/2023



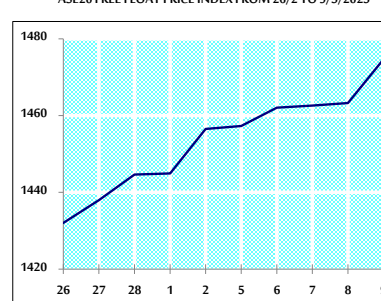
VALUE TRADED BY SECTOR THURSDAY 9/3/2023



GENERAL FREE FLOAT PRICE INDEX FROM 26/2 TO 9/3/2023



ASE20 FREE FLOAT PRICE INDEX FROM 26/2 TO 9/3/2023



GENERAL PRICE INDEX FROM 26/2 TO 9/3/2023

