

## Daily Summary for Amman Stock Exchange

### VALUE TRADED (JD)

	2022	2023	NET CHANGE	CHANGE (%)
Daily	11,627,073	5,686,709	-5,940,364	-51.09%
Cumulative (2/4-11/4)	69,790,650	38,624,277	-31,166,373	-44.66%
Cumulative (2/1-11/4)	456,738,691	572,762,574	116,023,883	25.40%

### NO. OF SHARES TRADED

	2022	2023	NET CHANGE	CHANGE (%)
Daily	4,597,995	2,870,410	-1,727,585	-37.57%
Cumulative (2/4-11/4)	28,539,273	26,082,548	-2,456,725	-8.61%
Cumulative (2/1-11/4)	300,744,673	366,652,585	65,907,912	21.91%

### NO. OF TRANSACTIONS

	2022	2023	NET CHANGE	CHANGE (%)
Daily	3,426	2,548	-878	-25.63%
Cumulative (2/4-11/4)	23,562	17,359	-6,203	-26.33%
Cumulative (2/1-11/4)	195,103	231,366	36,263	18.59%

### SOME FINANCIAL RATIOS FOR THE ASE (11/4/2023)

SECTOR	P/E	P/BV	DIVIDEND YIELD (%)	TURNOVER (%)
FINANCIAL	10.551	0.822	5.553	0.031
SERVICES	9.686	1.357	6.378	0.030
INDUSTRY	4.473	1.651	7.017	0.180
OVERALL	6.690	1.067	6.476	0.047

### STOCK PRICE INDEX WEIGHTED BY FREE FLOAT MARKET CAPITALIZATION (1999=1000)

	MONDAY 10/04/2023	TUESDAY 11/04/2023	% CHANGE	
			DAY BEFORE	YTD
GENERAL	2469.1	2459.6	-0.39%	-1.68%
FINANCIAL	2682.3	2674.5	-0.29%	-0.66%
SERVICES	1732.4	1731.7	-0.04%	-0.53%
INDUSTRY	5010.7	4960.1	-1.01%	-6.28%

### STOCK PRICE INDEX WEIGHTED BY FREE FLOAT MARKET CAPITALIZATION ASE20 (2014=1000)

	1334.1	1327.5	-0.50%	-1.33%
--	--------	--------	--------	--------

### Total Return Index ASETR (2021=1074)

	1481.7	1474.3	-0.50%	3.09%
--	--------	--------	--------	-------

### STOCK PRICE INDEX WEIGHTED BY MARKET CAPITALIZATION (1991=1000)

	MONDAY 10/04/2023	TUESDAY 11/04/2023	% CHANGE	
			DAY BEFORE	YTD
GENERAL	4580.0	4561.1	-0.41%	-3.58%
BANKS	6677.1	6664.2	-0.19%	-1.33%
INSURANCE	1295.4	1293.0	-0.18%	-2.90%
SERVICES	898.2	897.4	-0.08%	5.32%
INDUSTRY	6325.1	6274.4	-0.80%	-8.83%

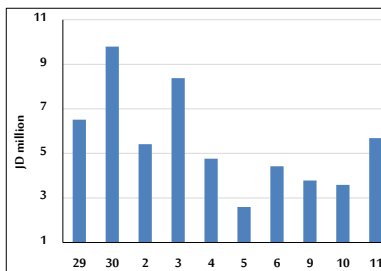
### STOCK PRICE MARKET INDEX WEIGHTED BY FREE FLOAT MARKET CAP. (2012=1000)

	MONDAY 10/04/2023	TUESDAY 11/04/2023	% CHANGE	
			DAY BEFORE	YTD
FIRST MARKET	1387.9	1382.8	-0.37%	-1.83%
SECOND MARKET	790.7	789.8	-0.11%	0.17%

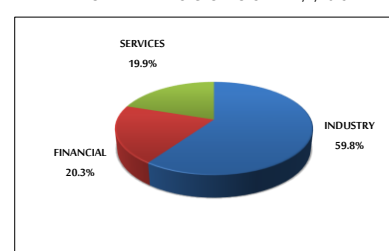
### MARKET CAPITALIZATION (JD)

	17,452,395,508	17,385,528,606	-0.38%	-3.43%
--	----------------	----------------	--------	--------

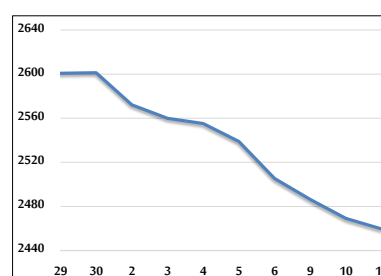
### VALUE TRADED FROM 29/3 TO 11/4/2023



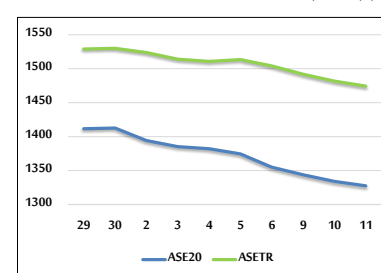
### VALUE TRADED BY SECTOR TUESDAY 11/4/2023



### GENERAL FREE FLOAT PRICE INDEX FROM 29/3 TO 11/4/2023



### ASE20 and ASETR FREE FLOAT PRICE INDEX FROM 29/3 TO 11/4/2023



### STOCK PRICE INDEX FROM 29/3 TO 11/4/2023

