

## Daily Summary for Amman Stock Exchange

### VALUE TRADED (JD)

	2022	2023	NET CHANGE	CHANGE (%)
Daily	16,005,195	4,403,626	-11,601,569	-72.49%
Cumulative (1/5-4/5)	62,867,270	22,109,712	-40,757,558	-64.83%
Cumulative (2/1-4/5)	626,313,473	667,624,773	41,311,300	6.60%

### NO. OF SHARES TRADED

	2022	2023	NET CHANGE	CHANGE (%)
Daily	5,942,630	4,533,200	-1,409,430	-23.72%
Cumulative (1/5-4/5)	23,785,189	17,047,806	-6,737,383	-28.33%
Cumulative (2/1-4/5)	375,980,724	421,756,860	45,776,136	12.18%

### NO. OF TRANSACTIONS

	2022	2023	NET CHANGE	CHANGE (%)
Daily	5,357	3,172	-2,185	-40.79%
Cumulative (1/5-4/5)	17,949	12,198	-5,751	-32.04%
Cumulative (2/1-4/5)	253,693	269,698	16,005	6.31%

### SOME FINANCIAL RATIOS FOR THE ASE (4/5/2023)

SECTOR	P/E	P/BV	DIVIDEND YIELD (%)	TURNOVER (%)
FINANCIAL	9.782	0.800	5.758	0.038
SERVICES	9.847	1.352	6.502	0.073
INDUSTRY	5.013	1.747	6.634	0.308
OVERALL	6.851	1.074	6.449	0.075

### STOCK PRICE INDEX WEIGHTED BY FREE FLOAT MARKET CAPITALIZATION (1999=1000)

	WEDNESDAY 03/05/2023	THURSDAY 04/05/2023	% CHANGE	
			DAY BEFORE	YTD
GENERAL	2456.5	2456.1	-0.02%	-1.82%
FINANCIAL	2633.4	2633.6	0.01%	-2.18%
SERVICES	1740.6	1733.1	-0.43%	-0.44%
INDUSTRY	5135.1	5158.2	0.45%	-2.53%

### STOCK PRICE INDEX WEIGHTED BY FREE FLOAT MARKET CAPITALIZATION ASE20 (2014=1000)

	1325.5	1324.9	-0.05%	-1.52%
--	--------	--------	--------	--------

### Total Return Index ASETR (2021=1074)

	1505.7	1505.0	-0.05%	5.23%
--	--------	--------	--------	-------

### STOCK PRICE INDEX WEIGHTED BY MARKET CAPITALIZATION (1991=1000)

	WEDNESDAY 03/05/2023	THURSDAY 04/05/2023	% CHANGE	
			DAY BEFORE	YTD
GENERAL	4590.3	4588.9	-0.03%	-2.99%
BANKS	6486.1	6465.8	-0.31%	-4.26%
INSURANCE	1302.0	1304.2	0.17%	-2.06%
SERVICES	876.9	878.3	0.16%	3.07%
INDUSTRY	6643.3	6659.2	0.24%	-3.24%

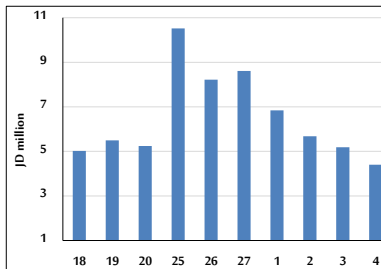
### STOCK PRICE MARKET INDEX WEIGHTED BY FREE FLOAT MARKET CAP. (2012=1000)

	WEDNESDAY 03/05/2023	THURSDAY 04/05/2023	% CHANGE	
			DAY BEFORE	YTD
FIRST MARKET	1380.5	1379.9	-0.04%	-2.03%
SECOND MARKET	784.1	785.6	0.19%	-0.37%

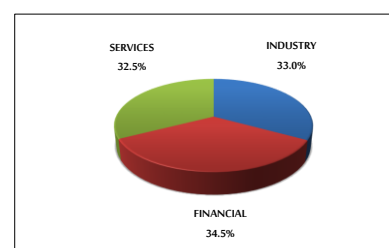
### MARKET CAPITALIZATION (JD)

	17,482,668,272	17,476,613,993	-0.03%	-2.93%
--	----------------	----------------	--------	--------

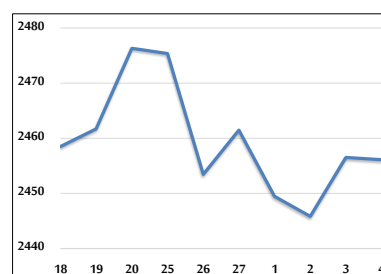
### VALUE TRADED FROM 18/4 TO 4/5/2023



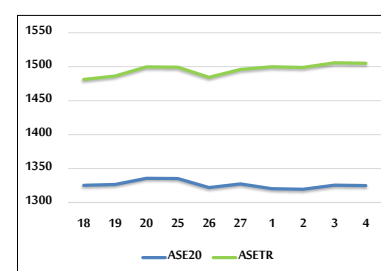
### VALUE TRADED BY SECTOR THURSDAY 4/5/2023



### GENERAL FREE FLOAT PRICE INDEX FROM 18/4 TO 4/5/2023



### ASE20 and ASETR FREE FLOAT PRICE INDEX FROM 18/4 TO 4/5/2023



### STOCK PRICE INDEX FROM 18/4 TO 4/5/2023

