

Daily Summary for Amman Stock Exchange

VALUE TRADED (JD)

	2022	2023	NET CHANGE	CHANGE (%)
Daily	9,934,459	4,578,134	-5,356,325	-53.92%
Cumulative (1/5-8/5)	91,443,956	31,184,564	-60,259,392	-65.90%
Cumulative (2/1-8/5)	654,890,159	676,699,625	21,809,466	3.33%

NO. OF SHARES TRADED

	2022	2023	NET CHANGE	CHANGE (%)
Daily	7,137,579	5,098,978	-2,038,601	-28.56%
Cumulative (1/5-8/5)	39,098,395	26,931,603	-12,166,792	-31.12%
Cumulative (2/1-8/5)	391,293,930	431,640,657	40,346,727	10.31%

NO. OF TRANSACTIONS

	2022	2023	NET CHANGE	CHANGE (%)
Daily	4,651	3,030	-1,621	-34.85%
Cumulative (1/5-8/5)	27,644	18,178	-9,466	-34.24%
Cumulative (2/1-8/5)	263,388	275,678	12,290	4.67%

SOME FINANCIAL RATIOS FOR THE ASE (8/5/2023)

SECTOR	P/E	P/BV	DIVIDEND YIELD (%)	TURNOVER (%)
FINANCIAL	9.760	0.797	5.775	0.083
SERVICES	9.794	1.344	6.537	0.032
INDUSTRY	4.957	1.727	6.708	0.188
OVERALL	6.810	1.067	6.489	0.084

STOCK PRICE INDEX WEIGHTED BY FREE FLOAT MARKET CAPITALIZATION (1999=1000)

	SUNDAY 07/05/2023	MONDAY 08/05/2023	% CHANGE	
			DAY BEFORE	YTD
GENERAL	2444.6	2443.8	-0.03%	-2.31%
FINANCIAL	2630.2	2629.0	-0.04%	-2.35%
SERVICES	1726.1	1719.5	-0.38%	-1.22%
INDUSTRY	5074.0	5103.9	0.59%	-3.56%

STOCK PRICE INDEX WEIGHTED BY FREE FLOAT MARKET CAPITALIZATION ASE20 (2014=1000)

	1317.3	1317.2	-0.01%	-2.09%
--	--------	--------	--------	--------

Total Return Index ASETR (2021=1074)

	1496.4	1496.3	-0.01%	4.62%
--	--------	--------	--------	-------

STOCK PRICE INDEX WEIGHTED BY MARKET CAPITALIZATION (1991=1000)

	SUNDAY 07/05/2023	MONDAY 08/05/2023	% CHANGE	
			DAY BEFORE	YTD
GENERAL	4546.5	4561.0	0.32%	-3.58%
BANKS	6456.4	6446.5	-0.15%	-4.55%
INSURANCE	1289.5	1283.8	-0.44%	-3.59%
SERVICES	878.8	877.1	-0.19%	2.94%
INDUSTRY	6517.1	6584.5	1.03%	-4.32%

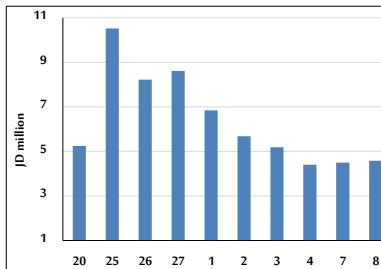
STOCK PRICE MARKET INDEX WEIGHTED BY FREE FLOAT MARKET CAP. (2012=1000)

	SUNDAY 07/05/2023	MONDAY 08/05/2023	% CHANGE	
			DAY BEFORE	YTD
FIRST MARKET	1372.6	1371.9	-0.05%	-2.60%
SECOND MARKET	790.1	796.5	0.81%	1.01%

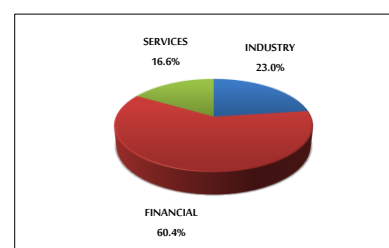
MARKET CAPITALIZATION (JD)

	17,322,190,925	17,365,810,662	0.25%	-3.54%
--	----------------	----------------	-------	--------

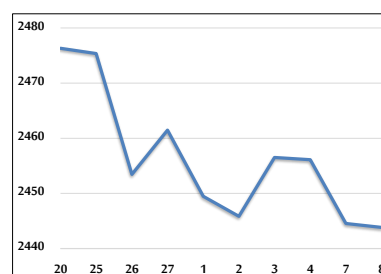
VALUE TRADED FROM 20/4 TO 8/5/2023



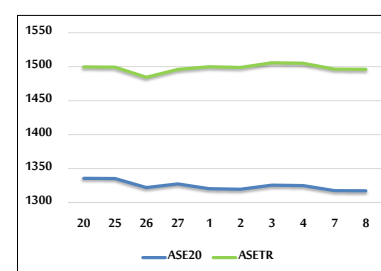
VALUE TRADED BY SECTOR MONDAY 8/5/2023



GENERAL FREE FLOAT PRICE INDEX FROM 20/4 TO 8/5/2023



ASE20 and ASETR FREE FLOAT PRICE INDEX FROM 20/4 TO 8/5/2023



STOCK PRICE INDEX FROM 20/4 TO 8/5/2023

