

Daily Summary for Amman Stock Exchange

VALUE TRADED (JD)

	2022	2023	NET CHANGE	CHANGE (%)
Daily	13,479,487	4,214,767	-9,264,720	-68.73%
Cumulative (1/5-9/5)	104,923,443	35,399,331	-69,524,112	-66.26%
Cumulative (2/1-9/5)	668,369,646	680,914,392	12,544,746	1.88%

NO. OF SHARES TRADED

	2022	2023	NET CHANGE	CHANGE (%)
Daily	6,566,924	4,967,951	-1,598,973	-24.35%
Cumulative (1/5-9/5)	45,665,319	31,899,554	-13,765,765	-30.14%
Cumulative (2/1-9/5)	397,860,854	436,608,608	38,747,754	9.74%

NO. OF TRANSACTIONS

	2022	2023	NET CHANGE	CHANGE (%)
Daily	4,846	2,771	-2,075	-42.82%
Cumulative (1/5-9/5)	32,490	20,949	-11,541	-35.52%
Cumulative (2/1-9/5)	268,234	278,449	10,215	3.81%

SOME FINANCIAL RATIOS FOR THE ASE (9/5/2023)

SECTOR	P/E	P/BV	DIVIDEND YIELD (%)	TURNOVER (%)
FINANCIAL	9.747	0.796	5.784	0.049
SERVICES	9.718	1.334	6.587	0.106
INDUSTRY	4.895	1.706	6.794	0.240
OVERALL	6.765	1.060	6.532	0.082

STOCK PRICE INDEX WEIGHTED BY FREE FLOAT MARKET CAPITALIZATION (1999=1000)

	MONDAY 08/05/2023	TUESDAY 09/05/2023	% CHANGE	
			DAY BEFORE	YTD
GENERAL	2443.8	2434.6	-0.38%	-2.68%
FINANCIAL	2629.0	2622.1	-0.26%	-2.60%
SERVICES	1719.5	1713.6	-0.34%	-1.56%
INDUSTRY	5103.9	5053.6	-0.99%	-4.51%

STOCK PRICE INDEX WEIGHTED BY FREE FLOAT MARKET CAPITALIZATION ASE20 (2014=1000)

	1317.2	1311.4	-0.44%	-2.53%
--	--------	--------	--------	--------

Total Return Index ASETR (2021=1074)

	1496.3	1491.3	-0.33%	4.28%
--	--------	--------	--------	-------

STOCK PRICE INDEX WEIGHTED BY MARKET CAPITALIZATION (1991=1000)

	MONDAY 08/05/2023	TUESDAY 09/05/2023	% CHANGE	
			DAY BEFORE	YTD
GENERAL	4561.0	4531.2	-0.65%	-4.21%
BANKS	6446.5	6439.3	-0.11%	-4.65%
INSURANCE	1283.8	1272.8	-0.86%	-4.42%
SERVICES	877.1	870.6	-0.74%	2.18%
INDUSTRY	6584.5	6501.7	-1.26%	-5.53%

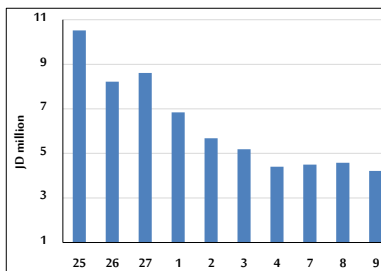
STOCK PRICE MARKET INDEX WEIGHTED BY FREE FLOAT MARKET CAP. (2012=1000)

	MONDAY 08/05/2023	TUESDAY 09/05/2023	% CHANGE	
			DAY BEFORE	YTD
FIRST MARKET	1371.9	1365.6	-0.46%	-3.05%
SECOND MARKET	796.5	797.3	0.10%	1.11%

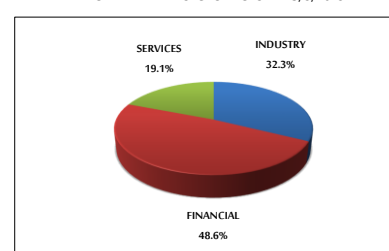
MARKET CAPITALIZATION (JD)

	17,365,810,662	17,255,036,486	-0.64%	-4.16%
--	----------------	----------------	--------	--------

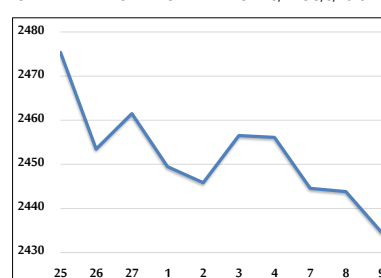
VALUE TRADED FROM 25/4 TO 9/5/2023



VALUE TRADED BY SECTOR TUESDAY 9/5/2023



GENERAL FREE FLOAT PRICE INDEX FROM 25/4 TO 9/5/2023



ASE20 and ASETR FREE FLOAT PRICE INDEX FROM 25/4 TO 9/5/2023



STOCK PRICE INDEX FROM 25/4 TO 9/5/2023

