

Daily Summary for Amman Stock Exchange

VALUE TRADED (JD)

	2022	2023	NET CHANGE	CHANGE (%)
Daily	10,397,535	8,944,992	-1,452,543	-13.97%
Cumulative (1/5-10/5)	115,320,978	44,344,323	-70,976,655	-61.55%
Cumulative (2/1-10/5)	678,767,181	689,859,384	11,092,203	1.63%

NO. OF SHARES TRADED

	2022	2023	NET CHANGE	CHANGE (%)
Daily	6,158,067	7,580,834	1,422,767	23.10%
Cumulative (1/5-10/5)	51,823,386	39,480,388	-12,342,998	-23.82%
Cumulative (2/1-10/5)	404,018,921	444,189,442	40,170,521	9.94%

NO. OF TRANSACTIONS

	2022	2023	NET CHANGE	CHANGE (%)
Daily	4,007	3,770	-237	-5.91%
Cumulative (1/5-10/5)	36,497	24,719	-11,778	-32.27%
Cumulative (2/1-10/5)	272,241	282,219	9,978	3.67%

SOME FINANCIAL RATIOS FOR THE ASE (10/5/2023)

SECTOR	P/E	P/BV	DIVIDEND YIELD (%)	TURNOVER (%)
FINANCIAL	9.788	0.800	5.759	0.090
SERVICES	9.824	1.349	6.516	0.158
INDUSTRY	5.130	1.788	6.482	0.276
OVERALL	6.918	1.084	6.388	0.125

STOCK PRICE INDEX WEIGHTED BY FREE FLOAT MARKET CAPITALIZATION (1999=1000)

	TUESDAY 09/05/2023	WEDNESDAY 10/05/2023	% CHANGE	
			DAY BEFORE	YTD
GENERAL	2434.6	2474.2	1.63%	-1.10%
FINANCIAL	2622.1	2640.1	0.68%	-1.94%
SERVICES	1713.6	1744.7	1.81%	0.22%
INDUSTRY	5053.6	5256.8	4.02%	-0.67%

STOCK PRICE INDEX WEIGHTED BY FREE FLOAT MARKET CAPITALIZATION ASE20 (2014=1000)

	1311.4	1334.3	1.75%	-0.82%
--	--------	--------	-------	--------

Total Return Index ASETR (2021=1074)

	1491.3	1517.5	1.75%	6.11%
--	--------	--------	-------	-------

STOCK PRICE INDEX WEIGHTED BY MARKET CAPITALIZATION (1991=1000)

	TUESDAY 09/05/2023	WEDNESDAY 10/05/2023	% CHANGE	
			DAY BEFORE	YTD
GENERAL	4531.2	4633.3	2.25%	-2.05%
BANKS	6439.3	6468.5	0.45%	-4.22%
INSURANCE	1272.8	1287.2	1.13%	-3.34%
SERVICES	870.6	873.2	0.30%	2.48%
INDUSTRY	6501.7	6829.0	5.03%	-0.77%

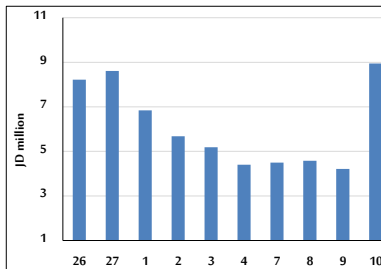
STOCK PRICE MARKET INDEX WEIGHTED BY FREE FLOAT MARKET CAP. (2012=1000)

	TUESDAY 09/05/2023	WEDNESDAY 10/05/2023	% CHANGE	
			DAY BEFORE	YTD
FIRST MARKET	1365.6	1389.4	1.74%	-1.36%
SECOND MARKET	797.3	797.1	-0.03%	1.08%

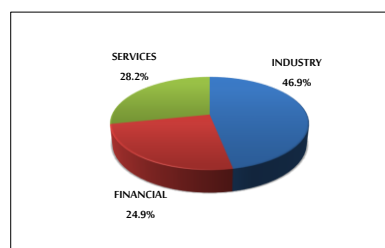
MARKET CAPITALIZATION (JD)

	17,255,036,486	17,616,685,229	2.10%	-2.15%
--	----------------	----------------	-------	--------

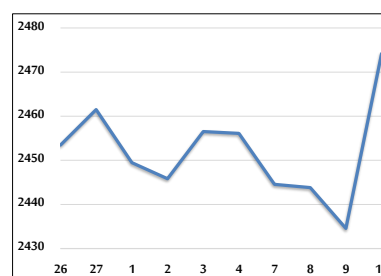
VALUE TRADED FROM 26/4 TO 10/5/2023



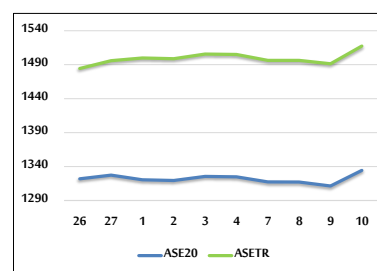
VALUE TRADED BY SECTOR WEDNESDAY 10/5/2023



GENERAL FREE FLOAT PRICE INDEX FROM 26/4 TO 10/5/2023



ASE20 and ASETR FREE FLOAT PRICE INDEX FROM 26/4 TO 10/5/2023



STOCK PRICE INDEX FROM 26/4 TO 10/5/2023

