

## Daily Summary for Amman Stock Exchange

### VALUE TRADED (JD)

	2022	2023	NET CHANGE	CHANGE (%)
Daily	8,725,242	5,764,431	-2,960,811	-33.93%
Cumulative (1/5-14/5)	132,872,322	56,194,976	-76,677,346	-57.71%
Cumulative (2/1-14/5)	696,318,525	701,710,037	5,391,512	0.77%

### NO. OF SHARES TRADED

	2022	2023	NET CHANGE	CHANGE (%)
Daily	4,979,937	5,447,446	467,509	9.39%
Cumulative (1/5-14/5)	61,760,701	51,053,422	-10,707,279	-17.34%
Cumulative (2/1-14/5)	413,956,236	455,762,476	41,806,240	10.10%

### NO. OF TRANSACTIONS

	2022	2023	NET CHANGE	CHANGE (%)
Daily	3,717	2,893	-824	-22.17%
Cumulative (1/5-14/5)	44,319	30,598	-13,721	-30.96%
Cumulative (2/1-14/5)	280,063	288,098	8,035	2.87%

### SOME FINANCIAL RATIOS FOR THE ASE (14/5/2023)

SECTOR	P/E	P/BV	DIVIDEND YIELD (%)	TURNOVER (%)
FINANCIAL	9.865	0.806	5.714	0.067
SERVICES	9.866	1.354	6.489	0.054
INDUSTRY	5.116	1.782	6.501	0.295
OVERALL	6.942	1.088	6.365	0.090

### STOCK PRICE INDEX WEIGHTED BY FREE FLOAT MARKET CAPITALIZATION (1999=1000)

	THURSDAY 11/05/2023	SUNDAY 14/05/2023	% CHANGE	
			DAY BEFORE	YTD
GENERAL	2477.4	2481.7	0.18%	-0.79%
FINANCIAL	2649.4	2650.6	0.04%	-1.55%
SERVICES	1738.6	1751.0	0.71%	0.58%
INDUSTRY	5255.0	5246.4	-0.16%	-0.87%

### STOCK PRICE INDEX WEIGHTED BY FREE FLOAT MARKET CAPITALIZATION ASE20 (2014=1000)

	1336.5	1337.5	0.08%	-0.58%
--	--------	--------	-------	--------

### Total Return Index ASETR (2021=1074)

	1519.9	1521.1	0.08%	6.36%
--	--------	--------	-------	-------

### STOCK PRICE INDEX WEIGHTED BY MARKET CAPITALIZATION (1991=1000)

	THURSDAY 11/05/2023	SUNDAY 14/05/2023	% CHANGE	
			DAY BEFORE	YTD
GENERAL	4643.7	4649.9	0.13%	-1.70%
BANKS	6494.1	6525.4	0.48%	-3.38%
INSURANCE	1290.2	1290.2	0.00%	-3.12%
SERVICES	875.3	878.1	0.32%	3.05%
INDUSTRY	6829.9	6808.1	-0.32%	-1.07%

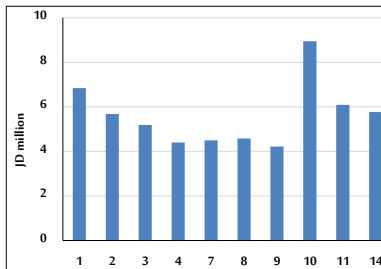
### STOCK PRICE MARKET INDEX WEIGHTED BY FREE FLOAT MARKET CAP. (2012=1000)

	THURSDAY 11/05/2023	SUNDAY 14/05/2023	% CHANGE	
			DAY BEFORE	YTD
FIRST MARKET	1391.1	1392.7	0.12%	-1.13%
SECOND MARKET	798.1	798.0	-0.01%	1.21%

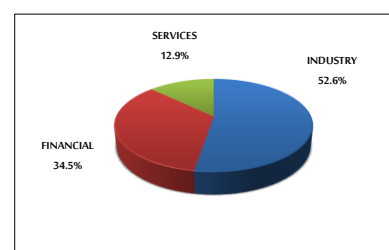
### MARKET CAPITALIZATION (JD)

	17,653,404,426	17,676,182,993	0.13%	-1.82%
--	----------------	----------------	-------	--------

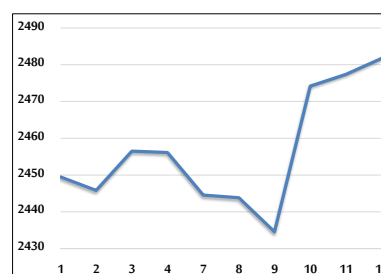
### VALUE TRADED FROM 1/5 TO 14/5/2023



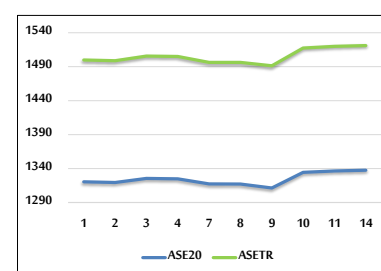
### VALUE TRADED BY SECTOR SUNDAY 14/5/2023



### GENERAL FREE FLOAT PRICE INDEX FROM 1/5 TO 14/5/2023



### ASE20 and ASETR FREE FLOAT PRICE INDEX FROM 1/5 TO 14/5/2023



### STOCK PRICE INDEX FROM 1/5 TO 14/5/2023

