

## Daily Summary for Amman Stock Exchange

### VALUE TRADED (JD)

	2022	2023	NET CHANGE	CHANGE (%)
Daily	3,885,814	6,041,187	2,155,373	55.47%
Cumulative (1/5-15/5)	136,758,136	62,236,163	-74,521,973	-54.49%
Cumulative (2/1-15/5)	700,204,339	707,751,224	7,546,885	1.08%

### NO. OF SHARES TRADED

	2022	2023	NET CHANGE	CHANGE (%)
Daily	2,890,876	5,214,835	2,323,959	80.39%
Cumulative (1/5-15/5)	64,651,577	56,268,257	-8,383,320	-12.97%
Cumulative (2/1-15/5)	416,847,112	460,977,311	44,130,199	10.59%

### NO. OF TRANSACTIONS

	2022	2023	NET CHANGE	CHANGE (%)
Daily	2,467	3,506	1,039	42.12%
Cumulative (1/5-15/5)	46,786	34,104	-12,682	-27.11%
Cumulative (2/1-15/5)	282,530	291,604	9,074	3.21%

### SOME FINANCIAL RATIOS FOR THE ASE (15/5/2023)

SECTOR	P/E	P/BV	DIVIDEND YIELD (%)	TURNOVER (%)
FINANCIAL	9.847	0.804	5.724	0.050
SERVICES	9.891	1.358	6.472	0.095
INDUSTRY	5.156	1.797	6.450	0.293
OVERALL	6.960	1.091	6.348	0.086

### STOCK PRICE INDEX WEIGHTED BY FREE FLOAT MARKET CAPITALIZATION (1999=1000)

	SUNDAY 14/05/2023	MONDAY 15/05/2023	% CHANGE	
			DAY BEFORE	YTD
GENERAL	2481.7	2487.8	0.25%	-0.55%
FINANCIAL	2650.6	2650.8	0.00%	-1.54%
SERVICES	1751.0	1755.0	0.23%	0.82%
INDUSTRY	5246.4	5296.8	0.96%	0.08%

### STOCK PRICE INDEX WEIGHTED BY FREE FLOAT MARKET CAPITALIZATION ASE20 (2014=1000)

	1337.5	1341.5	0.29%	-0.29%
--	--------	--------	-------	--------

### Total Return Index ASETR (2021=1074)

	1521.1	1525.6	0.29%	6.67%
--	--------	--------	-------	-------

### STOCK PRICE INDEX WEIGHTED BY MARKET CAPITALIZATION (1991=1000)

	SUNDAY 14/05/2023	MONDAY 15/05/2023	% CHANGE	
			DAY BEFORE	YTD
GENERAL	4649.9	4662.0	0.26%	-1.44%
BANKS	6525.4	6511.5	-0.21%	-3.59%
INSURANCE	1290.2	1291.7	0.12%	-3.00%
SERVICES	878.1	878.5	0.04%	3.10%
INDUSTRY	6808.1	6867.4	0.87%	-0.21%

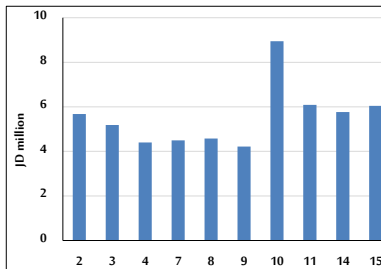
### STOCK PRICE MARKET INDEX WEIGHTED BY FREE FLOAT MARKET CAP. (2012=1000)

	SUNDAY 14/05/2023	MONDAY 15/05/2023	% CHANGE	
			DAY BEFORE	YTD
FIRST MARKET	1392.7	1396.1	0.24%	-0.89%
SECOND MARKET	798.0	801.3	0.41%	1.62%

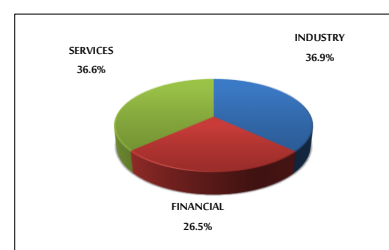
### MARKET CAPITALIZATION (JD)

	17,676,182,993	17,718,541,734	0.24%	-1.58%
--	----------------	----------------	-------	--------

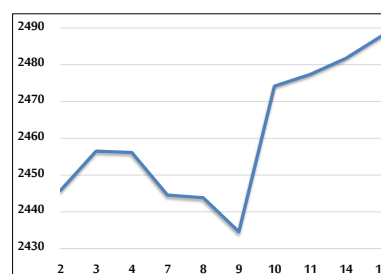
### VALUE TRADED FROM 2/5 TO 15/5/2023



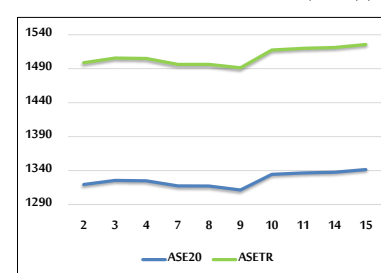
### VALUE TRADED BY SECTOR MONDAY 15/5/2023



### GENERAL FREE FLOAT PRICE INDEX FROM 2/5 TO 15/5/2023



### ASE20 and ASETR FREE FLOAT PRICE INDEX FROM 2/5 TO 15/5/2023



### STOCK PRICE INDEX FROM 2/5 TO 15/5/2023

