

## Daily Summary for Amman Stock Exchange

### VALUE TRADED (JD)

	2022	2023	NET CHANGE	CHANGE (%)
Daily	7,768,643	5,918,429	-1,850,214	-23.82%
Cumulative (1/5-16/5)	144,526,779	68,154,592	-76,372,187	-52.84%
Cumulative (2/1-16/5)	707,972,982	713,669,653	5,696,671	0.80%

### NO. OF SHARES TRADED

	2022	2023	NET CHANGE	CHANGE (%)
Daily	3,826,901	5,092,123	1,265,222	33.06%
Cumulative (1/5-16/5)	68,478,478	61,360,380	-7,118,098	-10.39%
Cumulative (2/1-16/5)	420,674,013	466,069,434	45,395,421	10.79%

### NO. OF TRANSACTIONS

	2022	2023	NET CHANGE	CHANGE (%)
Daily	3,435	3,379	-56	-1.63%
Cumulative (1/5-16/5)	50,221	37,483	-12,738	-25.36%
Cumulative (2/1-16/5)	285,965	294,983	9,018	3.15%

### SOME FINANCIAL RATIOS FOR THE ASE (16/5/2023)

SECTOR	P/E	P/BV	DIVIDEND YIELD (%)	TURNOVER (%)
FINANCIAL	9.861	0.806	5.710	0.072
SERVICES	9.896	1.358	6.469	0.064
INDUSTRY	5.153	1.796	6.453	0.194
OVERALL	6.967	1.092	6.340	0.084

### STOCK PRICE INDEX WEIGHTED BY FREE FLOAT MARKET CAPITALIZATION (1999=1000)

	MONDAY 15/05/2023	TUESDAY 16/05/2023	% CHANGE	
			DAY BEFORE	YTD
GENERAL	2487.8	2492.1	0.17%	-0.38%
FINANCIAL	2650.8	2661.0	0.39%	-1.16%
SERVICES	1755.0	1752.0	-0.17%	0.64%
INDUSTRY	5296.8	5283.8	-0.24%	-0.16%

### STOCK PRICE INDEX WEIGHTED BY FREE FLOAT MARKET CAPITALIZATION ASE20 (2014=1000)

	1341.5	1344.7	0.24%	-0.04%
--	--------	--------	-------	--------

### Total Return Index ASETR (2021=1074)

	1525.6	1529.3	0.24%	6.93%
--	--------	--------	-------	-------

### STOCK PRICE INDEX WEIGHTED BY MARKET CAPITALIZATION (1991=1000)

	MONDAY 15/05/2023	TUESDAY 16/05/2023	% CHANGE	
			DAY BEFORE	YTD
GENERAL	4662.0	4668.0	0.13%	-1.32%
BANKS	6511.5	6529.2	0.27%	-3.32%
INSURANCE	1291.7	1296.0	0.34%	-2.68%
SERVICES	878.5	882.0	0.40%	3.51%
INDUSTRY	6867.4	6858.0	-0.14%	-0.35%

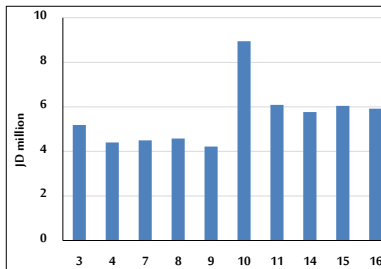
### STOCK PRICE MARKET INDEX WEIGHTED BY FREE FLOAT MARKET CAP. (2012=1000)

	MONDAY 15/05/2023	TUESDAY 16/05/2023	% CHANGE	
			DAY BEFORE	YTD
FIRST MARKET	1396.1	1398.7	0.18%	-0.70%
SECOND MARKET	801.3	805.3	0.50%	2.13%

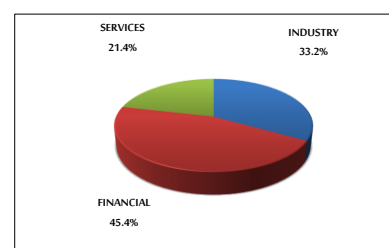
### MARKET CAPITALIZATION (JD)

	17,718,541,734	17,738,127,849	0.11%	-1.48%
--	----------------	----------------	-------	--------

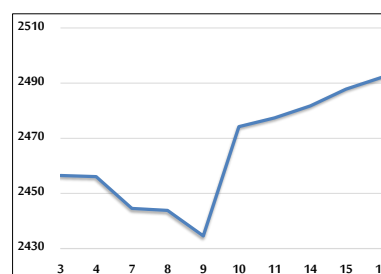
### VALUE TRADED FROM 3/5 TO 16/5/2023



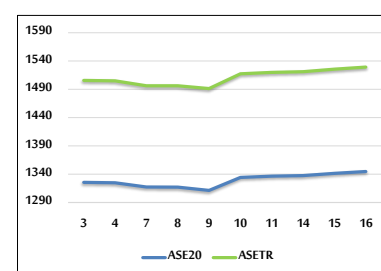
### VALUE TRADED BY SECTOR TUESDAY 16/5/2023



### GENERAL FREE FLOAT PRICE INDEX FROM 3/5 TO 16/5/2023



### ASE20 and ASETR FREE FLOAT PRICE INDEX FROM 3/5 TO 16/5/2023



### STOCK PRICE INDEX FROM 3/5 TO 16/5/2023

