

Daily Summary for Amman Stock Exchange

VALUE TRADED (JD)

	2022	2023	NET CHANGE	CHANGE (%)
Daily	10,385,695	6,582,285	-3,803,410	-36.62%
Cumulative (2/7-6/7)	61,963,103	26,593,131	-35,369,972	-57.08%
Cumulative (2/1-6/7)	1,032,343,761	889,913,850	-142,429,911	-13.80%

NO. OF SHARES TRADED

	2022	2023	NET CHANGE	CHANGE (%)
Daily	4,165,416	4,211,563	46,147	1.11%
Cumulative (2/7-6/7)	31,394,938	17,818,091	-13,576,847	-43.25%
Cumulative (2/1-6/7)	614,169,171	611,329,173	-2,839,998	-0.46%

NO. OF TRANSACTIONS

	2022	2023	NET CHANGE	CHANGE (%)
Daily	4,445	3,187	-1,258	-28.30%
Cumulative (2/7-6/7)	23,695	13,744	-9,951	-42.00%
Cumulative (2/1-6/7)	399,329	389,659	-9,670	-2.42%

SOME FINANCIAL RATIOS FOR THE ASE (6/7/2023)

SECTOR	P/E	P/BV	DIVIDEND YIELD (%)	TURNOVER (%)
FINANCIAL	9.773	0.799	5.759	0.057
SERVICES	10.128	1.390	6.317	0.065
INDUSTRY	4.741	1.652	7.015	0.122
OVERALL	6.734	1.055	6.567	0.067

STOCK PRICE INDEX WEIGHTED BY FREE FLOAT MARKET CAPITALIZATION (1999=1000)

	WEDNESDAY 05/07/2023	THURSDAY 06/07/2023	% CHANGE	
			DAY BEFORE	YTD
GENERAL	2477.1	2471.1	-0.24%	-1.22%
FINANCIAL	2643.2	2645.4	0.08%	-1.74%
SERVICES	1806.1	1811.2	0.28%	4.04%
INDUSTRY	5049.3	4945.6	-2.06%	-6.55%

STOCK PRICE INDEX WEIGHTED BY FREE FLOAT MARKET CAPITALIZATION ASE20 (2014=1000)

	1327.9	1324.2	-0.29%	-1.57%
--	--------	--------	--------	--------

Total Return Index ASETR (2021=1074)

	1510.2	1505.9	-0.28%	5.30%
--	--------	--------	--------	-------

STOCK PRICE INDEX WEIGHTED BY MARKET CAPITALIZATION (1991=1000)

	WEDNESDAY 05/07/2023	THURSDAY 06/07/2023	% CHANGE	
			DAY BEFORE	YTD
GENERAL	4540.2	4512.6	-0.61%	-4.60%
BANKS	6431.9	6456.5	0.38%	-4.40%
INSURANCE	1289.7	1297.4	0.60%	-2.57%
SERVICES	910.8	910.2	-0.07%	6.82%
INDUSTRY	6443.2	6315.1	-1.99%	-8.24%

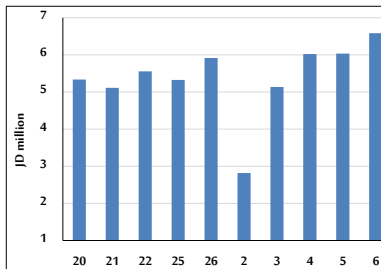
STOCK PRICE MARKET INDEX WEIGHTED BY FREE FLOAT MARKET CAP. (2012=1000)

	WEDNESDAY 05/07/2023	THURSDAY 06/07/2023	% CHANGE	
			DAY BEFORE	YTD
FIRST MARKET	1380.9	1377.3	-0.26%	-2.22%
SECOND MARKET	859.8	859.8	0.00%	9.04%

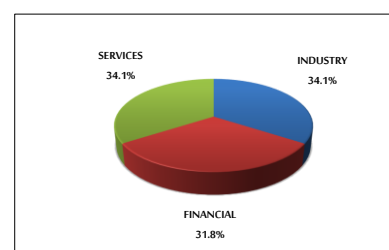
MARKET CAPITALIZATION (JD)

	17,305,954,005	17,206,520,021	-0.57%	-4.43%
--	----------------	----------------	--------	--------

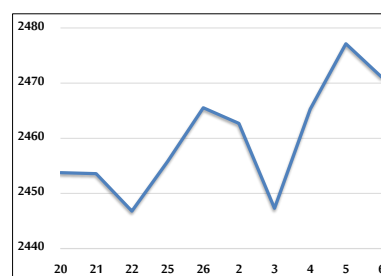
VALUE TRADED FROM 20/6 TO 6/7/2023



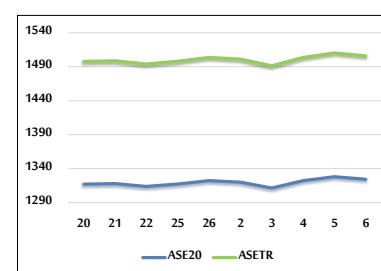
VALUE TRADED BY SECTOR THURSDAY 6/7/2023



GENERAL FREE FLOAT PRICE INDEX FROM 20/6 TO 6/7/2023



ASE20 and ASETR FREE FLOAT PRICE INDEX FROM 20/6 TO 6/7/2023



STOCK PRICE INDEX FROM 20/6 TO 6/7/2023

