

## Daily Summary for Amman Stock Exchange

### VALUE TRADED (JD)

	2022	2023	NET CHANGE	CHANGE (%)
Daily	5,456,440	3,682,587	-1,773,853	-32.51%
Cumulative (1/10-23/10)	87,612,676	77,989,734	-9,622,942	-10.98%
Cumulative (2/1-23/10)	1,655,702,762	1,252,540,409	-403,162,353	-24.35%

### NO. OF SHARES TRADED

	2022	2023	NET CHANGE	CHANGE (%)
Daily	2,663,491	2,297,392	-366,099	-13.75%
Cumulative (1/10-23/10)	62,516,996	79,519,918	17,002,922	27.20%
Cumulative (2/1-23/10)	950,887,410	918,504,695	-32,382,715	-3.41%

### NO. OF TRANSACTIONS

	2022	2023	NET CHANGE	CHANGE (%)
Daily	2,703	1,878	-825	-30.52%
Cumulative (1/10-23/10)	46,850	41,444	-5,406	-11.54%
Cumulative (2/1-23/10)	628,504	573,667	-54,837	-8.73%

### SOME FINANCIAL RATIOS FOR THE ASE (23/10/2023)

SECTOR	P/E	P/BV	DIVIDEND YIELD (%)	TURNOVER (%)
FINANCIAL	8.840	0.806	5.717	0.039
SERVICES	11.853	1.310	6.708	0.023
INDUSTRY	5.280	1.548	7.484	0.045
OVERALL	6.965	1.015	6.731	0.037

### STOCK PRICE INDEX WEIGHTED BY FREE FLOAT MARKET CAPITALIZATION (1999=1000)

	SUNDAY 22/10/2023	MONDAY 23/10/2023	% CHANGE	
			DAY BEFORE	YTD
GENERAL	2421.1	2414.1	-0.29%	-3.50%
FINANCIAL	2687.6	2684.5	-0.12%	-0.29%
SERVICES	1657.3	1655.5	-0.11%	-4.90%
INDUSTRY	4772.6	4717.7	-1.15%	-10.86%

### STOCK PRICE INDEX WEIGHTED BY FREE FLOAT MARKET CAPITALIZATION ASE20 (2014=1000)

	1303.9	1299.7	-0.32%	-3.39%
--	--------	--------	--------	--------

### Total Return Index ASETR (2021=1074)

	1482.8	1478.1	-0.32%	3.35%
--	--------	--------	--------	-------

### STOCK PRICE INDEX WEIGHTED BY MARKET CAPITALIZATION (1991=1000)

	SUNDAY 22/10/2023	MONDAY 23/10/2023	% CHANGE	
			DAY BEFORE	YTD
GENERAL	4411.7	4386.2	-0.58%	-7.28%
BANKS	6574.1	6566.2	-0.12%	-2.78%
INSURANCE	1252.9	1256.3	0.27%	-5.66%
SERVICES	868.5	870.5	0.23%	2.16%
INDUSTRY	5903.7	5819.1	-1.43%	-15.45%

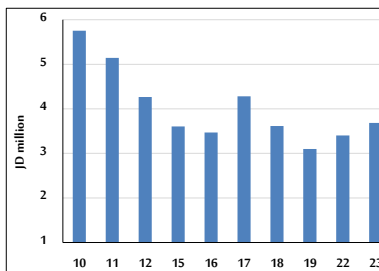
### STOCK PRICE MARKET INDEX WEIGHTED BY FREE FLOAT MARKET CAP. (2012=1000)

	SUNDAY 22/10/2023	MONDAY 23/10/2023	% CHANGE	
			DAY BEFORE	YTD
FIRST MARKET	1353.7	1348.8	-0.36%	-4.24%
SECOND MARKET	839.1	842.2	0.37%	6.81%

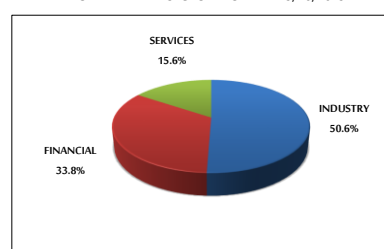
### MARKET CAPITALIZATION (JD)

	16,917,058,336	16,834,477,132	-0.49%	-6.49%
--	----------------	----------------	--------	--------

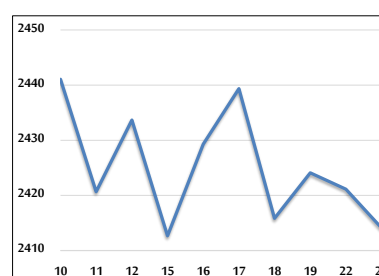
### VALUE TRADED FROM 10/10 TO 23/10/2023



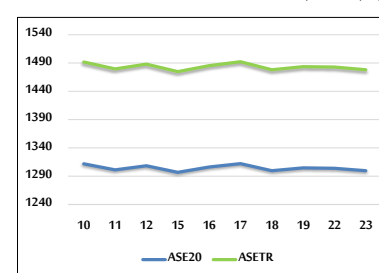
### VALUE TRADED BY SECTOR MONDAY 23/10/2023



### GENERAL FREE FLOAT PRICE INDEX FROM 10/10 TO 23/10/2023



### ASE20 and ASETR FREE FLOAT PRICE INDEX FROM 10/10 TO 23/10/2023



### STOCK PRICE INDEX FROM 10/10 TO 23/10/2023

