

Daily Summary for Amman Stock Exchange

VALUE TRADED (JD)

	2022	2023	NET CHANGE	CHANGE (%)
Daily	13,995,408	3,152,443	-10,842,965	-77.48%
Cumulative (1/10-24/10)	101,608,084	81,142,177	-20,465,907	-20.14%
Cumulative (2/1-24/10)	1,669,698,170	1,255,692,852	-414,005,318	-24.80%

NO. OF SHARES TRADED

	2022	2023	NET CHANGE	CHANGE (%)
Daily	7,574,573	2,605,463	-4,969,110	-65.60%
Cumulative (1/10-24/10)	70,091,569	82,125,381	12,033,812	17.17%
Cumulative (2/1-24/10)	958,461,983	921,110,158	-37,351,825	-3.90%

NO. OF TRANSACTIONS

	2022	2023	NET CHANGE	CHANGE (%)
Daily	2,940	2,027	-913	-31.05%
Cumulative (1/10-24/10)	49,790	43,471	-6,319	-12.69%
Cumulative (2/1-24/10)	631,444	575,694	-55,750	-8.83%

SOME FINANCIAL RATIOS FOR THE ASE (24/10/2023)

SECTOR	P/E	P/BV	DIVIDEND YIELD (%)	TURNOVER (%)
FINANCIAL	8.817	0.803	5.732	0.033
SERVICES	11.887	1.314	6.689	0.067
INDUSTRY	5.288	1.551	7.472	0.046
OVERALL	6.953	1.013	6.742	0.041

STOCK PRICE INDEX WEIGHTED BY FREE FLOAT MARKET CAPITALIZATION (1999=1000)

	MONDAY 23/10/2023	TUESDAY 24/10/2023	% CHANGE	
			DAY BEFORE	YTD
GENERAL	2414.1	2411.8	-0.09%	-3.59%
FINANCIAL	2684.5	2675.1	-0.35%	-0.64%
SERVICES	1655.5	1661.8	0.39%	-4.54%
INDUSTRY	4717.7	4728.7	0.23%	-10.65%

STOCK PRICE INDEX WEIGHTED BY FREE FLOAT MARKET CAPITALIZATION ASE20 (2014=1000)

	1299.7	1297.9	-0.13%	-3.52%
--	--------	--------	--------	--------

Total Return Index ASETR (2021=1074)

	1478.1	1476.1	-0.13%	3.21%
--	--------	--------	--------	-------

STOCK PRICE INDEX WEIGHTED BY MARKET CAPITALIZATION (1991=1000)

	MONDAY 23/10/2023	TUESDAY 24/10/2023	% CHANGE	
			DAY BEFORE	YTD
GENERAL	4386.2	4378.6	-0.17%	-7.44%
BANKS	6566.2	6528.8	-0.57%	-3.33%
INSURANCE	1256.3	1255.7	-0.04%	-5.70%
SERVICES	870.5	872.4	0.22%	2.38%
INDUSTRY	5819.1	5832.6	0.23%	-15.25%

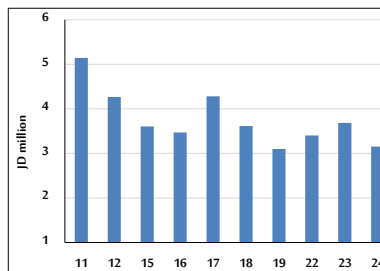
STOCK PRICE MARKET INDEX WEIGHTED BY FREE FLOAT MARKET CAP. (2012=1000)

	MONDAY 23/10/2023	TUESDAY 24/10/2023	% CHANGE	
			DAY BEFORE	YTD
FIRST MARKET	1348.8	1346.9	-0.14%	-4.38%
SECOND MARKET	842.2	843.7	0.18%	7.00%

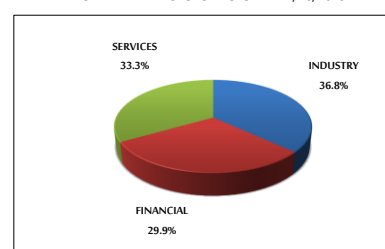
MARKET CAPITALIZATION (JD)

	16,834,477,132	16,808,838,140	-0.15%	-6.64%
--	----------------	----------------	--------	--------

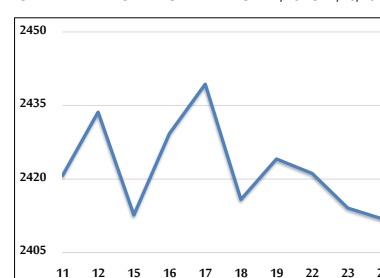
VALUE TRADED FROM 11/10 TO 24/10/2023



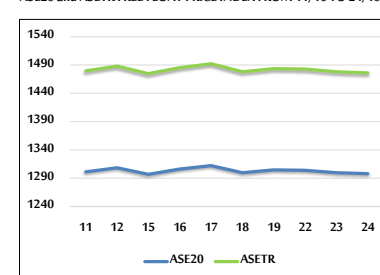
VALUE TRADED BY SECTOR TUESDAY 24/10/2023



GENERAL FREE FLOAT PRICE INDEX FROM 11/10 TO 24/10/2023



ASE20 and ASETR FREE FLOAT PRICE INDEX FROM 11/10 TO 24/10/2023



STOCK PRICE INDEX FROM 11/10 TO 24/10/2023

