

Daily Summary for Amman Stock Exchange

VALUE TRADED (JD)

	2022	2023	NET CHANGE	CHANGE (%)
Daily	4,560,038	3,671,923	-888,115	-19.48%
Cumulative (1/10-25/10)	106,168,122	84,814,100	-21,354,022	-20.11%
Cumulative (2/1-25/10)	1,674,258,208	1,259,364,775	-414,893,433	-24.78%

NO. OF SHARES TRADED

	2022	2023	NET CHANGE	CHANGE (%)
Daily	2,842,081	3,544,520	702,439	24.72%
Cumulative (1/10-25/10)	72,933,650	85,669,901	12,736,251	17.46%
Cumulative (2/1-25/10)	961,304,064	924,654,678	-36,649,386	-3.81%

NO. OF TRANSACTIONS

	2022	2023	NET CHANGE	CHANGE (%)
Daily	2,100	1,664	-436	-20.76%
Cumulative (1/10-25/10)	51,890	45,135	-6,755	-13.02%
Cumulative (2/1-25/10)	633,544	577,358	-56,186	-8.87%

SOME FINANCIAL RATIOS FOR THE ASE (25/10/2023)

SECTOR	P/E	P/BV	DIVIDEND YIELD (%)	TURNOVER (%)
FINANCIAL	8.837	0.805	5.719	0.053
SERVICES	11.895	1.315	6.684	0.088
INDUSTRY	5.269	1.545	7.499	0.027
OVERALL	6.958	1.014	6.738	0.056

STOCK PRICE INDEX WEIGHTED BY FREE FLOAT MARKET CAPITALIZATION (1999=1000)

	TUESDAY 24/10/2023	WEDNESDAY 25/10/2023	% CHANGE	
			DAY BEFORE	YTD
GENERAL	2411.8	2412.6	0.03%	-3.56%
FINANCIAL	2675.1	2679.4	0.16%	-0.48%
SERVICES	1661.8	1659.6	-0.14%	-4.67%
INDUSTRY	4728.7	4711.8	-0.36%	-10.97%

STOCK PRICE INDEX WEIGHTED BY FREE FLOAT MARKET CAPITALIZATION ASE20 (2014=1000)

	1297.9	1298.1	0.02%	-3.51%
--	--------	--------	-------	--------

Total Return Index ASETR (2021=1074)

	1476.1	1476.3	0.02%	3.23%
--	--------	--------	-------	-------

STOCK PRICE INDEX WEIGHTED BY MARKET CAPITALIZATION (1991=1000)

	TUESDAY 24/10/2023	WEDNESDAY 25/10/2023	% CHANGE	
			DAY BEFORE	YTD
GENERAL	4378.6	4381.4	0.06%	-7.38%
BANKS	6528.8	6546.3	0.27%	-3.07%
INSURANCE	1255.7	1250.2	-0.44%	-6.12%
SERVICES	872.4	875.0	0.30%	2.69%
INDUSTRY	5832.6	5817.9	-0.25%	-15.46%

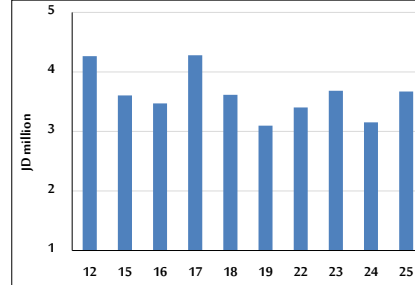
STOCK PRICE MARKET INDEX WEIGHTED BY FREE FLOAT MARKET CAP. (2012=1000)

	TUESDAY 24/10/2023	WEDNESDAY 25/10/2023	% CHANGE	
			DAY BEFORE	YTD
FIRST MARKET	1346.9	1347.2	0.02%	-4.36%
SECOND MARKET	843.7	846.8	0.36%	7.39%

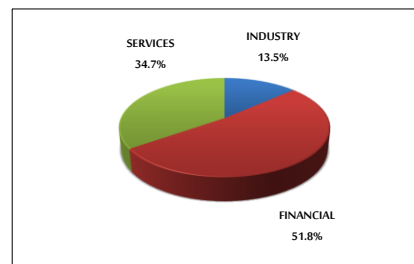
MARKET CAPITALIZATION (JD)

	16,808,838,140	16,810,155,622	0.01%	-6.63%
--	----------------	----------------	-------	--------

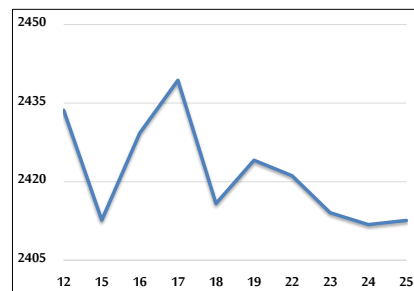
VALUE TRADED FROM 12/10 TO 25/10/2023



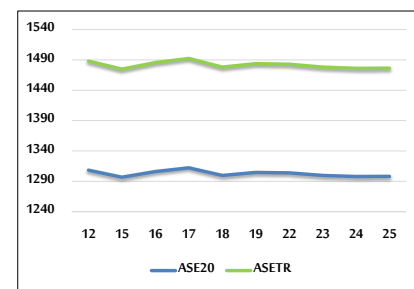
VALUE TRADED BY SECTOR WEDNESDAY 25/10/2023



GENERAL FREE FLOAT PRICE INDEX FROM 12/10 TO 25/10/2023



ASE20 and ASETR FREE FLOAT PRICE INDEX FROM 12/10 TO 25/10/2023



STOCK PRICE INDEX FROM 12/10 TO 25/10/2023

