

Daily Summary for Amman Stock Exchange

VALUE TRADED (JD)

	2022	2023	NET CHANGE	CHANGE (%)
Daily	9,470,005	5,018,872	-4,451,133	-47.00%
Cumulative (1/10-29/10)	117,623,716	93,109,367	-24,514,349	-20.84%
Cumulative (2/1-29/10)	1,685,713,802	1,267,660,042	-418,053,760	-24.80%

NO. OF SHARES TRADED

	2022	2023	NET CHANGE	CHANGE (%)
Daily	6,586,788	5,310,330	-1,276,458	-19.38%
Cumulative (1/10-29/10)	80,927,047	94,366,528	13,439,481	16.61%
Cumulative (2/1-29/10)	969,297,461	933,351,305	-35,946,156	-3.71%

NO. OF TRANSACTIONS

	2022	2023	NET CHANGE	CHANGE (%)
Daily	2,085	1,929	-156	-7.48%
Cumulative (1/10-29/10)	54,812	48,963	-5,849	-10.67%
Cumulative (2/1-29/10)	636,466	581,186	-55,280	-8.69%

SOME FINANCIAL RATIOS FOR THE ASE (29/10/2023)

SECTOR	P/E	P/BV	DIVIDEND YIELD (%)	TURNOVER (%)
FINANCIAL	8.818	0.803	5.732	0.040
SERVICES	11.922	1.318	6.669	0.067
INDUSTRY	5.313	1.558	7.436	0.337
OVERALL	6.972	1.016	6.724	0.085

STOCK PRICE INDEX WEIGHTED BY FREE FLOAT MARKET CAPITALIZATION (1999=1000)

	THURSDAY 26/10/2023	SUNDAY 29/10/2023	% CHANGE	
			DAY BEFORE	YTD
GENERAL	2414.2	2414.1	-0.01%	-3.50%
FINANCIAL	2679.1	2670.0	-0.34%	-0.83%
SERVICES	1665.6	1669.3	0.22%	-4.11%
INDUSTRY	4708.1	4756.4	1.02%	-10.13%

STOCK PRICE INDEX WEIGHTED BY FREE FLOAT MARKET CAPITALIZATION ASE20 (2014=1000)

	THURSDAY 26/10/2023	SUNDAY 29/10/2023	% CHANGE
	1299.0	1298.6	-0.03%

Total Return Index ASETR (2021=1074)

	THURSDAY 26/10/2023	SUNDAY 29/10/2023	% CHANGE
	1477.3	1476.9	-0.03%

STOCK PRICE INDEX WEIGHTED BY MARKET CAPITALIZATION (1991=1000)

	THURSDAY 26/10/2023	SUNDAY 29/10/2023	% CHANGE	
			DAY BEFORE	YTD
GENERAL	4378.2	4390.7	0.28%	-7.18%
BANKS	6545.5	6531.5	-0.21%	-3.29%
INSURANCE	1251.1	1254.5	0.27%	-5.80%
SERVICES	873.7	873.0	-0.08%	2.46%
INDUSTRY	5810.0	5871.1	1.05%	-14.69%

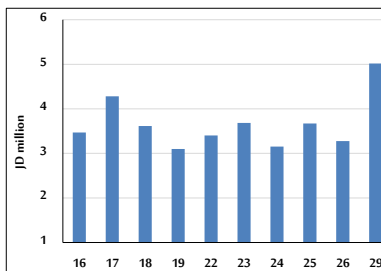
STOCK PRICE MARKET INDEX WEIGHTED BY FREE FLOAT MARKET CAP. (2012=1000)

	THURSDAY 26/10/2023	SUNDAY 29/10/2023	% CHANGE	
			DAY BEFORE	YTD
FIRST MARKET	1347.8	1347.9	0.01%	-4.31%
SECOND MARKET	848.0	845.8	-0.25%	7.27%

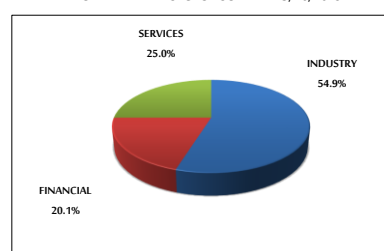
MARKET CAPITALIZATION (JD)

	THURSDAY 26/10/2023	SUNDAY 29/10/2023	% CHANGE
	16,798,913,591	16,844,291,946	0.27%

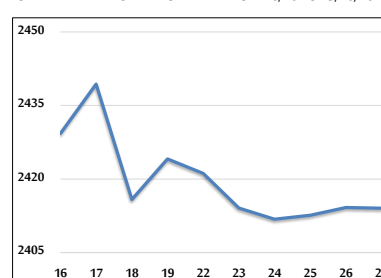
VALUE TRADED FROM 16/10 TO 29/10/2023



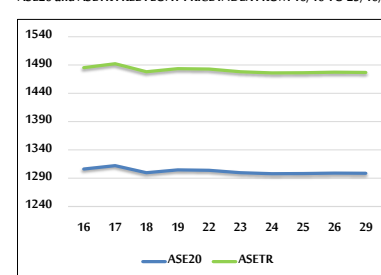
VALUE TRADED BY SECTOR SUNDAY 29/10/2023



GENERAL FREE FLOAT PRICE INDEX FROM 16/10 TO 29/10/2023



ASE20 and ASETR FREE FLOAT PRICE INDEX FROM 16/10 TO 29/10/2023



STOCK PRICE INDEX FROM 16/10 TO 29/10/2023

