

Daily Summary for Amman Stock Exchange

VALUE TRADED (JD)

	2022	2023	NET CHANGE	CHANGE (%)
Daily	7,588,779	4,290,288	-3,298,491	-43.47%
Cumulative (1/10-31/10)	125,212,495	103,225,154	-21,987,341	-17.56%
Cumulative (2/1-31/10)	1,693,302,581	1,277,775,829	-415,526,752	-24.54%

NO. OF SHARES TRADED

	2022	2023	NET CHANGE	CHANGE (%)
Daily	6,113,003	3,151,920	-2,961,083	-48.44%
Cumulative (1/10-31/10)	87,040,050	104,479,881	17,439,831	20.04%
Cumulative (2/1-31/10)	975,410,464	943,464,658	-31,945,806	-3.28%

NO. OF TRANSACTIONS

	2022	2023	NET CHANGE	CHANGE (%)
Daily	3,063	2,734	-329	-10.74%
Cumulative (1/10-31/10)	57,875	53,830	-4,045	-6.99%
Cumulative (2/1-31/10)	639,529	586,053	-53,476	-8.36%

SOME FINANCIAL RATIOS FOR THE ASE (31/10/2023)

SECTOR	P/E	P/BV	DIVIDEND YIELD (%)	TURNOVER (%)
FINANCIAL	8.874	0.808	5.695	0.042
SERVICES	11.897	1.315	6.683	0.068
INDUSTRY	5.302	1.555	7.453	0.063
OVERALL	6.987	1.018	6.709	0.050

STOCK PRICE INDEX WEIGHTED BY FREE FLOAT MARKET CAPITALIZATION (1999=1000)

	MONDAY 30/10/2023	TUESDAY 31/10/2023	% CHANGE	
			DAY BEFORE	YTD
GENERAL	2422.6	2414.8	-0.32%	-3.47%
FINANCIAL	2684.9	2678.6	-0.23%	-0.51%
SERVICES	1669.9	1661.8	-0.48%	-4.54%
INDUSTRY	4764.6	4737.7	-0.56%	-10.48%

STOCK PRICE INDEX WEIGHTED BY FREE FLOAT MARKET CAPITALIZATION ASE20 (2014=1000)

	MONDAY 30/10/2023	TUESDAY 31/10/2023	% CHANGE DAY BEFORE	% CHANGE YTD
	1303.9	1299.7	-0.33%	-3.39%

Total Return Index ASETR (2021=1074)

	MONDAY 30/10/2023	TUESDAY 31/10/2023	% CHANGE DAY BEFORE	% CHANGE YTD
	1482.9	1478.0	-0.33%	3.35%

STOCK PRICE INDEX WEIGHTED BY MARKET CAPITALIZATION (1991=1000)

	MONDAY 30/10/2023	TUESDAY 31/10/2023	% CHANGE	
			DAY BEFORE	YTD
GENERAL	4409.6	4400.0	-0.22%	-6.98%
BANKS	6584.7	6575.7	-0.14%	-2.63%
INSURANCE	1254.5	1260.6	0.49%	-5.33%
SERVICES	872.1	871.6	-0.05%	2.29%
INDUSTRY	5876.9	5853.6	-0.40%	-14.94%

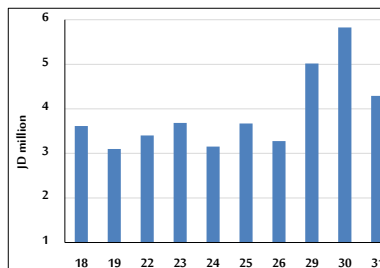
STOCK PRICE MARKET INDEX WEIGHTED BY FREE FLOAT MARKET CAP. (2012=1000)

	MONDAY 30/10/2023	TUESDAY 31/10/2023	% CHANGE	
			DAY BEFORE	YTD
FIRST MARKET	1353.2	1348.7	-0.33%	-4.25%
SECOND MARKET	847.6	846.1	-0.18%	7.30%

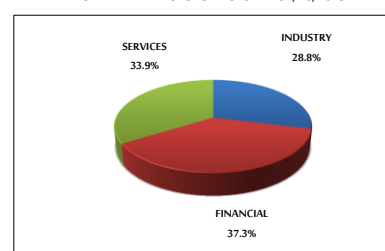
MARKET CAPITALIZATION (JD)

	MONDAY 30/10/2023	TUESDAY 31/10/2023	% CHANGE DAY BEFORE	% CHANGE YTD
	16,917,828,411	16,880,667,498	-0.22%	-6.24%

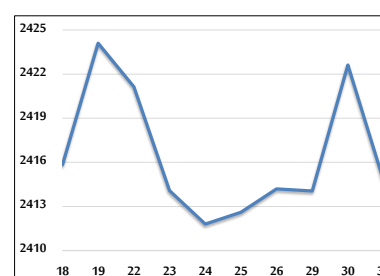
VALUE TRADED FROM 18/10 TO 31/10/2023



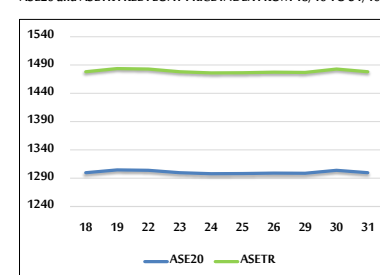
VALUE TRADED BY SECTOR TUESDAY 31/10/2023



GENERAL FREE FLOAT PRICE INDEX FROM 18/10 TO 31/10/2023



ASE20 and ASETR FREE FLOAT PRICE INDEX FROM 18/10 TO 31/10/2023



STOCK PRICE INDEX FROM 18/10 TO 31/10/2023

