

Daily Summary for Amman Stock Exchange

VALUE TRADED (JD)

	2022	2023	NET CHANGE	CHANGE (%)
Daily	4,684,556	4,565,156	-119,400	-2.55%
Cumulative (1/11-1/11)	4,684,556	4,565,156	-119,400	-2.55%
Cumulative (2/1-1/11)	1,697,987,137	1,282,340,985	-415,646,152	-24.48%

NO. OF SHARES TRADED

	2022	2023	NET CHANGE	CHANGE (%)
Daily	3,685,129	3,984,144	299,015	8.11%
Cumulative (1/11-1/11)	3,685,129	3,984,144	299,015	8.11%
Cumulative (2/1-1/11)	979,095,593	947,448,802	-31,646,791	-3.23%

NO. OF TRANSACTIONS

	2022	2023	NET CHANGE	CHANGE (%)
Daily	2,503	2,546	43	1.72%
Cumulative (1/11-1/11)	2,503	2,546	43	1.72%
Cumulative (2/1-1/11)	642,032	588,599	-53,433	-8.32%

SOME FINANCIAL RATIOS FOR THE ASE (1/11/2023)

SECTOR	P/E	P/BV	DIVIDEND YIELD (%)	TURNOVER (%)
FINANCIAL	7.830	0.807	5.703	0.056
SERVICES	11.547	1.313	6.693	0.060
INDUSTRY	6.859	1.552	7.467	0.108
OVERALL	7.382	1.017	6.719	0.063

STOCK PRICE INDEX WEIGHTED BY FREE FLOAT MARKET CAPITALIZATION (1999=1000)

	TUESDAY 31/10/2023	WEDNESDAY 01/11/2023	% CHANGE	
			DAY BEFORE	YTD
GENERAL	2414.8	2414.5	-0.01%	-3.48%
FINANCIAL	2678.6	2673.7	-0.18%	-0.69%
SERVICES	1661.8	1664.4	0.15%	-4.39%
INDUSTRY	4737.7	4750.3	0.27%	-10.24%

STOCK PRICE INDEX WEIGHTED BY FREE FLOAT MARKET CAPITALIZATION ASE20 (2014=1000)

	1299.7	1298.7	-0.07%	-3.46%
--	--------	--------	--------	--------

Total Return Index ASETR (2021=1074)

	1478.0	1477.0	-0.07%	3.28%
--	--------	--------	--------	-------

STOCK PRICE INDEX WEIGHTED BY MARKET CAPITALIZATION (1991=1000)

	TUESDAY 31/10/2023	WEDNESDAY 01/11/2023	% CHANGE	
			DAY BEFORE	YTD
GENERAL	4400.0	4393.9	-0.14%	-7.11%
BANKS	6575.7	6566.6	-0.14%	-2.77%
INSURANCE	1260.6	1265.4	0.38%	-4.97%
SERVICES	871.6	869.7	-0.22%	2.07%
INDUSTRY	5853.6	5845.7	-0.14%	-15.06%

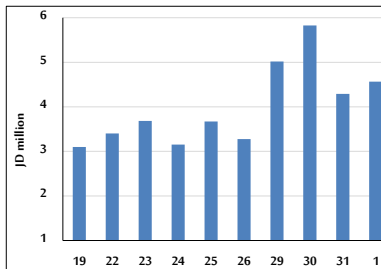
STOCK PRICE MARKET INDEX WEIGHTED BY FREE FLOAT MARKET CAP. (2012=1000)

	TUESDAY 31/10/2023	WEDNESDAY 01/11/2023	% CHANGE	
			DAY BEFORE	YTD
FIRST MARKET	1348.7	1348.0	-0.06%	-4.30%
SECOND MARKET	846.1	846.4	0.04%	7.34%

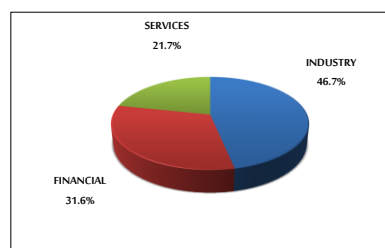
MARKET CAPITALIZATION (JD)

	16,880,667,498	16,853,831,740	-0.16%	-6.39%
--	----------------	----------------	--------	--------

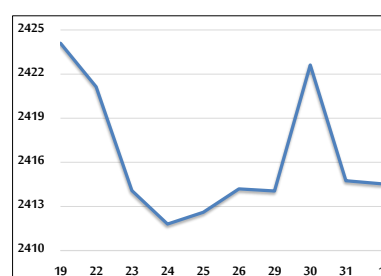
VALUE TRADED FROM 19/10 TO 1/11/2023



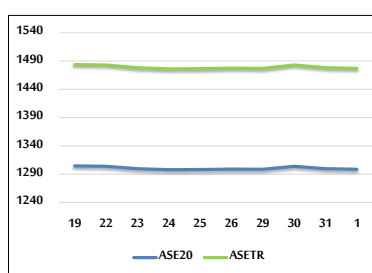
VALUE TRADED BY SECTOR WEDNESDAY 1/11/2023



GENERAL FREE FLOAT PRICE INDEX FROM 19/10 TO 1/11/2023



ASE20 and ASETR FREE FLOAT PRICE INDEX FROM 19/10 TO 1/11/2023



STOCK PRICE INDEX FROM 19/10 TO 1/11/2023

