

## Daily Summary for Amman Stock Exchange

### VALUE TRADED (JD)

	2022	2023	NET CHANGE	CHANGE (%)
Daily	8,236,037	7,872,327	-363,710	-4.42%
Cumulative (1/11-2/11)	12,920,593	12,437,483	-483,110	-3.74%
Cumulative (2/1-2/11)	1,706,223,174	1,290,213,312	-416,009,862	-24.38%

### NO. OF SHARES TRADED

	2022	2023	NET CHANGE	CHANGE (%)
Daily	5,658,356	4,636,367	-1,021,989	-18.06%
Cumulative (1/11-2/11)	9,343,485	8,620,511	-722,974	-7.74%
Cumulative (2/1-2/11)	984,753,949	952,085,169	-32,668,780	-3.32%

### NO. OF TRANSACTIONS

	2022	2023	NET CHANGE	CHANGE (%)
Daily	1,812	2,345	533	29.42%
Cumulative (1/11-2/11)	4,315	4,891	576	13.35%
Cumulative (2/1-2/11)	643,844	590,944	-52,900	-8.22%

### SOME FINANCIAL RATIOS FOR THE ASE (2/11/2023)

SECTOR	P/E	P/BV	DIVIDEND YIELD (%)	TURNOVER (%)
FINANCIAL	7.813	0.805	5.716	0.033
SERVICES	11.512	1.309	6.713	0.061
INDUSTRY	6.794	1.537	7.538	0.300
OVERALL	7.345	1.012	6.753	0.074

### STOCK PRICE INDEX WEIGHTED BY FREE FLOAT MARKET CAPITALIZATION (1999=1000)

	WEDNESDAY 01/11/2023	THURSDAY 02/11/2023	% CHANGE	
			DAY BEFORE	YTD
GENERAL	2414.5	2404.0	-0.44%	-3.90%
FINANCIAL	2673.7	2666.3	-0.28%	-0.96%
SERVICES	1664.4	1656.3	-0.48%	-4.85%
INDUSTRY	4750.3	4711.6	-0.81%	-10.97%

### STOCK PRICE INDEX WEIGHTED BY FREE FLOAT MARKET CAPITALIZATION ASE20 (2014=1000)

	2022	2023	NET CHANGE	CHANGE (%)
	1298.7	1294.0	-0.36%	-3.81%

### Total Return Index ASETR (2021=1074)

	2022	2023	NET CHANGE	CHANGE (%)
	1477.0	1471.6	-0.36%	2.90%

### STOCK PRICE INDEX WEIGHTED BY MARKET CAPITALIZATION (1991=1000)

	WEDNESDAY 01/11/2023	THURSDAY 02/11/2023	% CHANGE	
			DAY BEFORE	YTD
GENERAL	4393.9	4371.9	-0.50%	-7.58%
BANKS	6566.6	6556.4	-0.16%	-2.92%
INSURANCE	1265.4	1260.6	-0.38%	-5.34%
SERVICES	869.7	867.2	-0.29%	1.77%
INDUSTRY	5845.7	5786.3	-1.02%	-15.92%

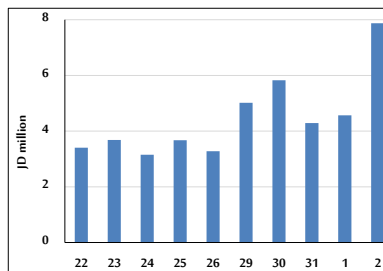
### STOCK PRICE MARKET INDEX WEIGHTED BY FREE FLOAT MARKET CAP. (2012=1000)

	WEDNESDAY 01/11/2023	THURSDAY 02/11/2023	% CHANGE	
			DAY BEFORE	YTD
FIRST MARKET	1348.0	1342.6	-0.39%	-4.68%
SECOND MARKET	846.4	840.3	-0.72%	6.56%

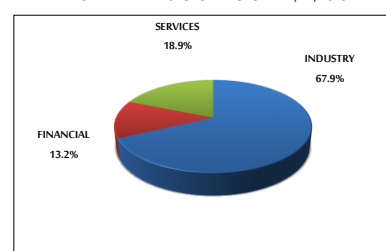
### MARKET CAPITALIZATION (JD)

	2022	2023	NET CHANGE	CHANGE (%)
	16,853,831,740	16,775,098,826	-0.47%	-6.82%

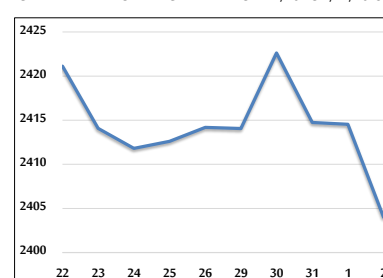
### VALUE TRADED FROM 22/10 TO 2/11/2023



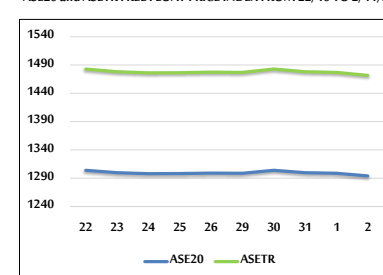
### VALUE TRADED BY SECTOR THURSDAY 2/11/2023



### GENERAL FREE FLOAT PRICE INDEX FROM 22/10 TO 2/11/2023



### ASE20 and ASETR FREE FLOAT PRICE INDEX FROM 22/10 TO 2/11/2023



### STOCK PRICE INDEX FROM 22/10 TO 2/11/2023

