

Daily Summary for Amman Stock Exchange

VALUE TRADED (JD)

	2022	2023	NET CHANGE	CHANGE (%)
Daily	4,019,872	3,442,147	-577,725	-14.37%
Cumulative (1/11-6/11)	21,337,916	18,466,558	-2,871,358	-13.46%
Cumulative (2/1-6/11)	1,714,640,497	1,296,242,387	-418,398,110	-24.40%

NO. OF SHARES TRADED

	2022	2023	NET CHANGE	CHANGE (%)
Daily	3,694,425	2,442,669	-1,251,756	-33.88%
Cumulative (1/11-6/11)	15,898,716	13,505,712	-2,393,004	-15.05%
Cumulative (2/1-6/11)	991,309,180	956,970,370	-34,338,810	-3.46%

NO. OF TRANSACTIONS

	2022	2023	NET CHANGE	CHANGE (%)
Daily	2,092	1,853	-239	-11.42%
Cumulative (1/11-6/11)	8,272	8,598	326	3.94%
Cumulative (2/1-6/11)	647,801	594,651	-53,150	-8.20%

SOME FINANCIAL RATIOS FOR THE ASE (6/11/2023)

SECTOR	P/E	P/BV	DIVIDEND YIELD (%)	TURNOVER (%)
FINANCIAL	7.778	0.801	5.742	0.039
SERVICES	11.454	1.302	6.747	0.038
INDUSTRY	6.766	1.531	7.570	0.040
OVERALL	7.314	1.008	6.781	0.039

STOCK PRICE INDEX WEIGHTED BY FREE FLOAT MARKET CAPITALIZATION (1999=1000)

	SUNDAY 05/11/2023	MONDAY 06/11/2023	% CHANGE	
			DAY BEFORE	YTD
GENERAL	2400.0	2391.9	-0.34%	-4.39%
FINANCIAL	2659.3	2652.8	-0.25%	-1.47%
SERVICES	1653.9	1648.8	-0.31%	-5.29%
INDUSTRY	4711.4	4681.0	-0.65%	-11.55%

STOCK PRICE INDEX WEIGHTED BY FREE FLOAT MARKET CAPITALIZATION ASE20 (2014=1000)

	1290.4	1286.6	-0.30%	-4.37%
--	--------	--------	--------	--------

Total Return Index ASETR (2021=1074)

	1467.5	1463.2	-0.30%	2.31%
--	--------	--------	--------	-------

STOCK PRICE INDEX WEIGHTED BY MARKET CAPITALIZATION (1991=1000)

	SUNDAY 05/11/2023	MONDAY 06/11/2023	% CHANGE	
			DAY BEFORE	YTD
GENERAL	4370.4	4353.7	-0.38%	-7.96%
BANKS	6538.9	6526.1	-0.20%	-3.37%
INSURANCE	1261.0	1259.7	-0.10%	-5.40%
SERVICES	864.0	860.8	-0.38%	1.02%
INDUSTRY	5806.8	5769.9	-0.64%	-16.16%

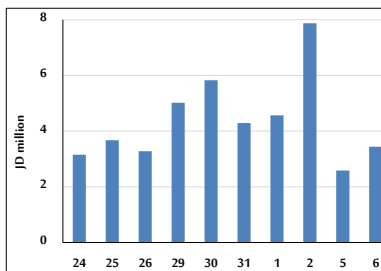
STOCK PRICE MARKET INDEX WEIGHTED BY FREE FLOAT MARKET CAP. (2012=1000)

	SUNDAY 05/11/2023	MONDAY 06/11/2023	% CHANGE	
			DAY BEFORE	YTD
FIRST MARKET	1339.4	1335.4	-0.30%	-5.20%
SECOND MARKET	842.1	837.8	-0.52%	6.25%

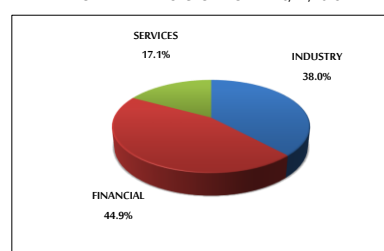
MARKET CAPITALIZATION (JD)

	16,760,943,872	16,700,272,360	-0.36%	-7.24%
--	----------------	----------------	--------	--------

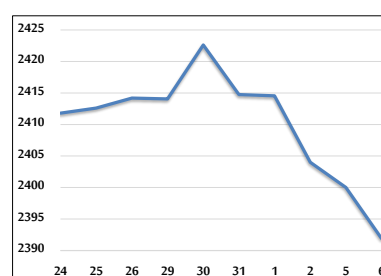
VALUE TRADED FROM 24/10 TO 6/11/2023



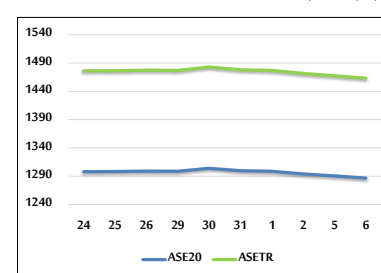
VALUE TRADED BY SECTOR MONDAY 6/11/2023



GENERAL FREE FLOAT PRICE INDEX FROM 24/10 TO 6/11/2023



ASE20 and ASETR FREE FLOAT PRICE INDEX FROM 24/10 TO 6/11/2023



STOCK PRICE INDEX FROM 24/10 TO 6/11/2023

