

## Daily Summary for Amman Stock Exchange

### VALUE TRADED (JD)

	2022	2023	NET CHANGE	CHANGE (%)
Daily	7,324,083	2,045,391	-5,278,692	-72.07%
Cumulative (1/11-7/11)	28,661,999	20,511,949	-8,150,050	-28.44%
Cumulative (2/1-7/11)	1,721,964,580	1,298,287,778	-423,676,802	-24.60%

### NO. OF SHARES TRADED

	2022	2023	NET CHANGE	CHANGE (%)
Daily	4,412,610	1,577,053	-2,835,557	-64.26%
Cumulative (1/11-7/11)	20,311,326	15,082,765	-5,228,561	-25.74%
Cumulative (2/1-7/11)	995,721,790	958,547,423	-37,174,367	-3.73%

### NO. OF TRANSACTIONS

	2022	2023	NET CHANGE	CHANGE (%)
Daily	2,221	1,576	-645	-29.04%
Cumulative (1/11-7/11)	10,493	10,174	-319	-3.04%
Cumulative (2/1-7/11)	650,022	596,227	-53,795	-8.28%

### SOME FINANCIAL RATIOS FOR THE ASE (7/11/2023)

SECTOR	P/E	P/BV	DIVIDEND YIELD (%)	TURNOVER (%)
FINANCIAL	7.751	0.799	5.761	0.028
SERVICES	11.430	1.300	6.761	0.022
INDUSTRY	6.686	1.513	7.661	0.014
OVERALL	7.266	1.001	6.826	0.025

### STOCK PRICE INDEX WEIGHTED BY FREE FLOAT MARKET CAPITALIZATION (1999=1000)

	MONDAY 06/11/2023	TUESDAY 07/11/2023	% CHANGE	
			DAY BEFORE	YTD
GENERAL	2391.9	2380.0	-0.50%	-4.86%
FINANCIAL	2652.8	2644.1	-0.33%	-1.79%
SERVICES	1648.8	1640.2	-0.52%	-5.78%
INDUSTRY	4681.0	4641.6	-0.84%	-12.29%

### STOCK PRICE INDEX WEIGHTED BY FREE FLOAT MARKET CAPITALIZATION ASE20 (2014=1000)

	1286.6	1280.3	-0.49%	-4.83%
--	--------	--------	--------	--------

### Total Return Index ASETR (2021=1074)

	1463.2	1456.0	-0.49%	1.81%
--	--------	--------	--------	-------

### STOCK PRICE INDEX WEIGHTED BY MARKET CAPITALIZATION (1991=1000)

	MONDAY 06/11/2023	TUESDAY 07/11/2023	% CHANGE	
			DAY BEFORE	YTD
GENERAL	4353.7	4325.0	-0.66%	-8.57%
BANKS	6526.1	6503.1	-0.35%	-3.71%
INSURANCE	1259.7	1259.9	0.01%	-5.39%
SERVICES	860.8	858.7	-0.24%	0.78%
INDUSTRY	5769.9	5700.3	-1.21%	-17.17%

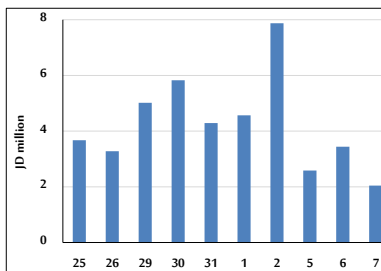
### STOCK PRICE MARKET INDEX WEIGHTED BY FREE FLOAT MARKET CAP. (2012=1000)

	MONDAY 06/11/2023	TUESDAY 07/11/2023	% CHANGE	
			DAY BEFORE	YTD
FIRST MARKET	1335.4	1328.8	-0.49%	-5.66%
SECOND MARKET	837.8	833.3	-0.54%	5.68%

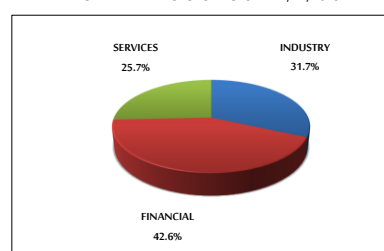
### MARKET CAPITALIZATION (JD)

	16,700,272,360	16,599,739,772	-0.60%	-7.80%
--	----------------	----------------	--------	--------

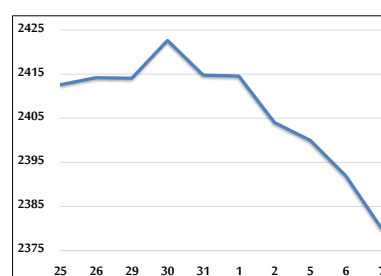
### VALUE TRADED FROM 25/10 TO 7/11/2023



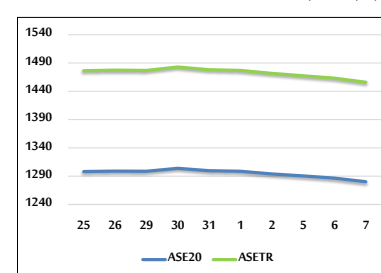
### VALUE TRADED BY SECTOR TUESDAY 7/11/2023



### GENERAL FREE FLOAT PRICE INDEX FROM 25/10 TO 7/11/2023



### ASE20 and ASETR FREE FLOAT PRICE INDEX FROM 25/10 TO 7/11/2023



### STOCK PRICE INDEX FROM 25/10 TO 7/11/2023

