

### Daily Summary for Amman Stock Exchange

VALUE TRADED (JD)

	2022	2023	NET CHANGE	CHANGE (%)
Daily	11,446,869	2,349,994	-9,096,875	-79.47%
Cumulative (1/11-8/11)	40,108,868	22,861,943	-17,246,925	-43.00%
Cumulative (2/1-8/11)	1,733,411,449	1,300,637,772	-432,773,677	-24.97%

NO. OF SHARES TRADED

	2022	2023	NET CHANGE	CHANGE (%)
Daily	9,947,573	2,553,670	-7,393,903	-74.33%
Cumulative (1/11-8/11)	30,258,899	17,636,435	-12,622,464	-41.71%
Cumulative (2/1-8/11)	1,005,669,363	961,101,093	-44,568,270	-4.43%

NO. OF TRANSACTIONS

	2022	2023	NET CHANGE	CHANGE (%)
Daily	2,757	1,831	-926	-33.59%
Cumulative (1/11-8/11)	13,250	12,005	-1,245	-9.40%
Cumulative (2/1-8/11)	652,779	598,058	-54,721	-8.38%

SOME FINANCIAL RATIOS FOR THE ASE (8/11/2023)

SECTOR	P/E	P/BV	DIVIDEND YIELD (%)	TURNOVER (%)
FINANCIAL	7.751	0.799	5.762	0.047
SERVICES	11.444	1.301	6.753	0.027
INDUSTRY	6.663	1.507	7.687	0.031
OVERALL	7.259	1.000	6.832	0.041

STOCK PRICE INDEX WEIGHTED BY FREE FLOAT MARKET CAPITALIZATION (1999=1000)

	TUESDAY 07/11/2023	WEDNESDAY 08/11/2023	% CHANGE	
			DAY BEFORE	YTD
GENERAL	2380.0	2380.1	0.00%	-4.86%
FINANCIAL	2644.1	2643.5	-0.02%	-1.81%
SERVICES	1640.2	1644.4	0.25%	-5.54%
INDUSTRY	4641.6	4627.0	-0.31%	-12.57%

STOCK PRICE INDEX WEIGHTED BY FREE FLOAT MARKET CAPITALIZATION ASE20 (2014=1000)

	1280.3	1280.3	0.00%	-4.83%
--	--------	--------	-------	--------

Total Return Index ASETR (2021=1074)

	1456.0	1456.0	0.00%	1.81%
--	--------	--------	-------	-------

STOCK PRICE INDEX WEIGHTED BY MARKET CAPITALIZATION (1991=1000)

	TUESDAY 07/11/2023	WEDNESDAY 08/11/2023	% CHANGE	
			DAY BEFORE	YTD
GENERAL	4325.0	4320.8	-0.10%	-8.66%
BANKS	6503.1	6502.6	-0.01%	-3.72%
INSURANCE	1259.9	1258.5	-0.11%	-5.49%
SERVICES	858.7	861.4	0.32%	1.10%
INDUSTRY	5700.3	5680.3	-0.35%	-17.46%

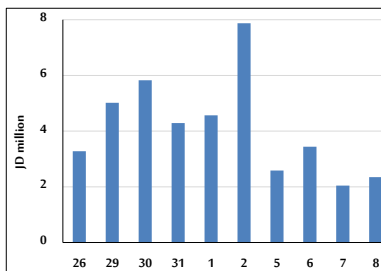
STOCK PRICE MARKET INDEX WEIGHTED BY FREE FLOAT MARKET CAP. (2012=1000)

	TUESDAY 07/11/2023	WEDNESDAY 08/11/2023	% CHANGE	
			DAY BEFORE	YTD
FIRST MARKET	1328.8	1328.9	0.01%	-5.66%
SECOND MARKET	833.3	837.1	0.46%	6.17%

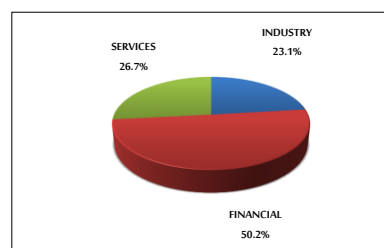
MARKET CAPITALIZATION (JD)

	16,599,739,772	16,584,059,692	-0.09%	-7.89%
--	----------------	----------------	--------	--------

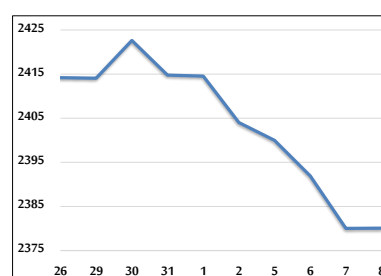
VALUE TRADED FROM 26/10 TO 8/11/2023



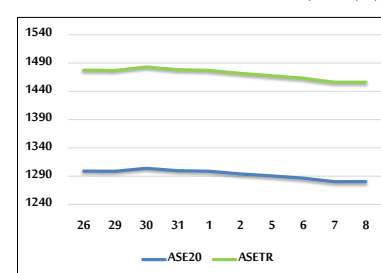
VALUE TRADED BY SECTOR WEDNESDAY 8/11/2023



GENERAL FREE FLOAT PRICE INDEX FROM 26/10 TO 8/11/2023



ASE20 and ASETR FREE FLOAT PRICE INDEX FROM 26/10 TO 8/11/2023



STOCK PRICE INDEX FROM 26/10 TO 8/11/2023

