

Daily Summary for Amman Stock Exchange

VALUE TRADED (JD)

	2022	2023	NET CHANGE	CHANGE (%)
Daily	6,352,202	2,868,844	-3,483,358	-54.84%
Cumulative (1/11-26/11)	93,911,865	60,468,263	-33,443,602	-35.61%
Cumulative (2/1-26/11)	1,787,214,446	1,338,244,092	-448,970,354	-25.12%

NO. OF SHARES TRADED

	2022	2023	NET CHANGE	CHANGE (%)
Daily	5,175,097	4,122,735	-1,052,362	-20.34%
Cumulative (1/11-26/11)	79,023,342	62,143,113	-16,880,229	-21.36%
Cumulative (2/1-26/11)	1,054,433,806	1,005,607,771	-48,826,035	-4.63%

NO. OF TRANSACTIONS

	2022	2023	NET CHANGE	CHANGE (%)
Daily	2,931	2,445	-486	-16.58%
Cumulative (1/11-26/11)	40,710	38,502	-2,208	-5.42%
Cumulative (2/1-26/11)	680,239	624,555	-55,684	-8.19%

SOME FINANCIAL RATIOS FOR THE ASE (26/11/2023)

SECTOR	P/E	P/BV	DIVIDEND YIELD (%)	TURNOVER (%)
FINANCIAL	7.811	0.805	5.716	0.075
SERVICES	11.456	1.303	6.746	0.032
INDUSTRY	6.764	1.530	7.572	0.066
OVERALL	7.329	1.010	6.767	0.066

STOCK PRICE INDEX WEIGHTED BY FREE FLOAT MARKET CAPITALIZATION (1999=1000)

	THURSDAY 23/11/2023	SUNDAY 26/11/2023	% CHANGE	
			DAY BEFORE	YTD
GENERAL	2393.7	2398.0	0.18%	-4.14%
FINANCIAL	2660.1	2667.9	0.29%	-0.90%
SERVICES	1640.8	1641.5	0.04%	-5.70%
INDUSTRY	4716.4	4708.1	-0.18%	-11.04%

STOCK PRICE INDEX WEIGHTED BY FREE FLOAT MARKET CAPITALIZATION ASE20 (2014=1000)

	1288.1	1290.3	0.17%	-4.09%
--	--------	--------	-------	--------

Total Return Index ASETR (2021=1074)

	1464.9	1467.3	0.17%	2.60%
--	--------	--------	-------	-------

STOCK PRICE INDEX WEIGHTED BY MARKET CAPITALIZATION (1991=1000)

	THURSDAY 23/11/2023	SUNDAY 26/11/2023	% CHANGE	
			DAY BEFORE	YTD
GENERAL	4357.7	4362.3	0.10%	-7.78%
BANKS	6531.8	6551.8	0.31%	-2.99%
INSURANCE	1273.9	1276.5	0.20%	-4.14%
SERVICES	863.0	865.8	0.33%	1.61%
INDUSTRY	5774.3	5760.4	-0.24%	-16.30%

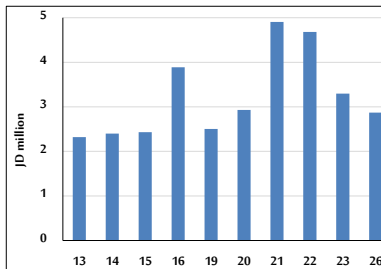
STOCK PRICE MARKET INDEX WEIGHTED BY FREE FLOAT MARKET CAP. (2012=1000)

	THURSDAY 23/11/2023	SUNDAY 26/11/2023	% CHANGE	
			DAY BEFORE	YTD
FIRST MARKET	1337.5	1339.7	0.17%	-4.89%
SECOND MARKET	841.1	844.6	0.42%	7.12%

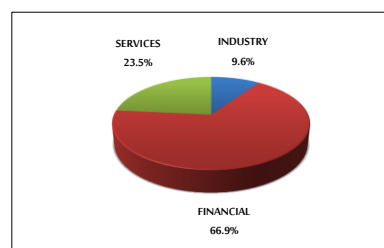
MARKET CAPITALIZATION (JD)

	16,722,764,050	16,737,085,795	0.09%	-7.04%
--	----------------	----------------	-------	--------

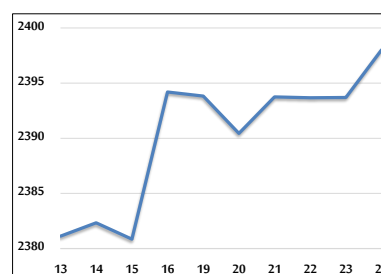
VALUE TRADED FROM 13/11 TO 26/11/2023



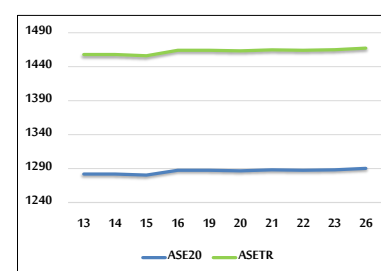
VALUE TRADED BY SECTOR SUNDAY 26/11/2023



GENERAL FREE FLOAT PRICE INDEX FROM 13/11 TO 26/11/2023



ASE20 and ASETR FREE FLOAT PRICE INDEX FROM 13/11 TO 26/11/2023



STOCK PRICE INDEX FROM 13/11 TO 26/11/2023

