

Daily Summary for Amman Stock Exchange

VALUE TRADED (JD)

	2022	2023	NET CHANGE	CHANGE (%)
Daily	6,753,435	3,321,572	-3,431,863	-50.82%
Cumulative (3/12-13/12)	41,948,702	44,768,201	2,819,499	6.72%
Cumulative (2/1-13/12)	1,853,384,045	1,402,330,586	-451,053,459	-24.34%

NO. OF SHARES TRADED

	2022	2023	NET CHANGE	CHANGE (%)
Daily	5,697,078	3,207,491	-2,489,587	-43.70%
Cumulative (3/12-13/12)	38,830,082	34,115,072	-4,715,010	-12.14%
Cumulative (2/1-13/12)	1,114,607,542	1,061,315,322	-53,292,220	-4.78%

NO. OF TRANSACTIONS

	2022	2023	NET CHANGE	CHANGE (%)
Daily	2,828	2,438	-390	-13.79%
Cumulative (3/12-13/12)	21,554	20,185	-1,369	-6.35%
Cumulative (2/1-13/12)	713,737	654,272	-59,465	-8.33%

SOME FINANCIAL RATIOS FOR THE ASE (13/12/2023)

SECTOR	P/E	P/BV	DIVIDEND YIELD (%)	TURNOVER (%)
FINANCIAL	7.849	0.809	5.679	0.051
SERVICES	11.370	1.293	6.797	0.061
INDUSTRY	6.701	1.516	7.644	0.038
OVERALL	7.312	1.007	6.782	0.051

STOCK PRICE INDEX WEIGHTED BY FREE FLOAT MARKET CAPITALIZATION (1999=1000)

	TUESDAY 12/12/2023	WEDNESDAY 13/12/2023	% CHANGE	
			DAY BEFORE	YTD
GENERAL	2395.4	2394.6	-0.04%	-4.28%
FINANCIAL	2686.3	2684.9	-0.05%	-0.27%
SERVICES	1618.1	1613.8	-0.27%	-7.30%
INDUSTRY	4665.7	4681.9	0.35%	-11.53%

STOCK PRICE INDEX WEIGHTED BY FREE FLOAT MARKET CAPITALIZATION ASE20 (2014=1000)

	1289.2	1288.1	-0.09%	-4.25%
--	--------	--------	--------	--------

Total Return Index ASETR (2021=1074)

	1466.2	1464.9	-0.09%	2.43%
--	--------	--------	--------	-------

STOCK PRICE INDEX WEIGHTED BY MARKET CAPITALIZATION (1991=1000)

	TUESDAY 12/12/2023	WEDNESDAY 13/12/2023	% CHANGE	
			DAY BEFORE	YTD
GENERAL	4351.7	4352.6	0.02%	-7.99%
BANKS	6587.5	6583.4	-0.06%	-2.52%
INSURANCE	1273.9	1274.9	0.08%	-4.26%
SERVICES	875.3	872.0	-0.38%	2.34%
INDUSTRY	5662.0	5676.1	0.25%	-17.52%

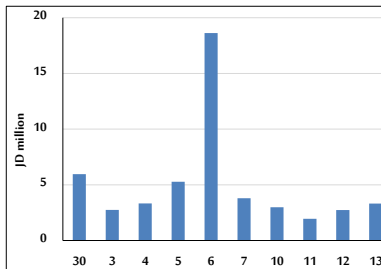
STOCK PRICE MARKET INDEX WEIGHTED BY FREE FLOAT MARKET CAP. (2012=1000)

	TUESDAY 12/12/2023	WEDNESDAY 13/12/2023	% CHANGE	
			DAY BEFORE	YTD
FIRST MARKET	1337.7	1337.1	-0.05%	-5.08%
SECOND MARKET	853.8	855.0	0.13%	8.43%

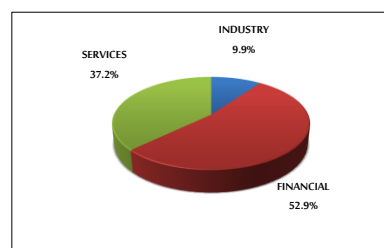
MARKET CAPITALIZATION (JD)

	16,705,056,738	16,707,462,917	0.01%	-7.20%
--	----------------	----------------	-------	--------

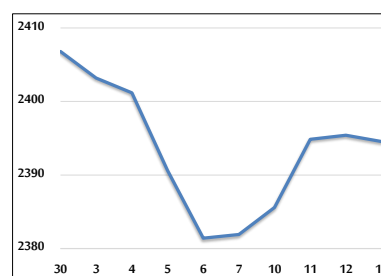
VALUE TRADED FROM 30/11 TO 13/12/2023



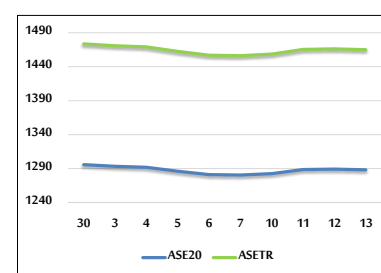
VALUE TRADED BY SECTOR WEDNESDAY 13/12/2023



GENERAL FREE FLOAT PRICE INDEX FROM 30/11 TO 13/12/2023



ASE20 and ASETR FREE FLOAT PRICE INDEX FROM 30/11 TO 13/12/2023



STOCK PRICE INDEX FROM 30/11 TO 13/12/2023

