

Daily Summary for Amman Stock Exchange

VALUE TRADED (JD)

	2021	2022	NET CHANGE	CHANGE (%)
Daily	8,493,235	5,427,204	-3,066,031	-36.10%
Cumulative (2/1-9/1)	57,854,999	35,939,210	-21,915,789	-37.88%
Cumulative (2/1-9/1)	57,854,999	35,939,210	-21,915,789	-37.88%

NO. OF SHARES TRADED

	2021	2022	NET CHANGE	CHANGE (%)
Daily	13,976,169	3,327,540	-10,648,629	-76.19%
Cumulative (2/1-9/1)	77,936,273	26,747,632	-51,188,641	-65.68%
Cumulative (2/1-9/1)	77,936,273	26,747,632	-51,188,641	-65.68%

NO. OF TRANSACTIONS

	2021	2022	NET CHANGE	CHANGE (%)
Daily	3,388	2,579	-809	-23.88%
Cumulative (2/1-9/1)	18,825	17,148	-1,677	-8.91%
Cumulative (2/1-9/1)	18,825	17,148	-1,677	-8.91%

SOME FINANCIAL RATIOS FOR THE ASE (9/1/2022)

SECTOR	P/E	P/BV	DIVIDEND YIELD (%)	TURNOVER (%)
FINANCIAL	35.732	0.887	3.206	0.048
SERVICES	-	1.287	2.223	0.075
INDUSTRY	28.616	2.145	2.617	0.047
OVERALL	37.801	1.137	2.897	0.053

STOCK PRICE INDEX WEIGHTED BY FREE FLOAT MARKET CAPITALIZATION (1999=1000)

	THURSDAY 06/01/2022	SUNDAY 09/01/2022	% CHANGE	
			DAY BEFORE	YTD
GENERAL	2169.9	2163.3	-0.30%	2.11%
FINANCIAL	2681.2	2672.4	-0.33%	2.61%
SERVICES	1346.2	1343.5	-0.21%	1.21%
INDUSTRY	3702.3	3693.7	-0.23%	0.76%

STOCK PRICE INDEX WEIGHTED BY FREE FLOAT MARKET CAPITALIZATION ASE20 (2014=1000)

	1106.5	1102.6	-0.35%	2.63%
--	--------	--------	--------	-------

STOCK PRICE INDEX WEIGHTED BY MARKET CAPITALIZATION (1991=1000)

	THURSDAY 06/01/2022	SUNDAY 09/01/2022	% CHANGE	
			DAY BEFORE	YTD
GENERAL	4105.7	4091.7	-0.34%	2.16%
BANKS	6778.6	6752.6	-0.38%	2.84%
INSURANCE	1378.1	1378.1	0.00%	3.75%
SERVICES	796.1	798.1	0.26%	2.01%
INDUSTRY	4774.0	4747.7	-0.55%	1.01%

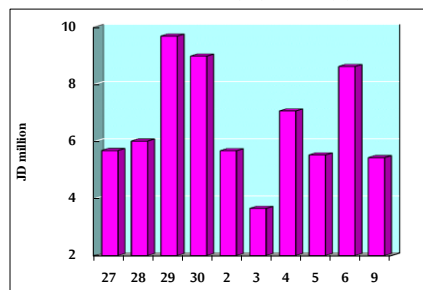
STOCK PRICE MARKET INDEX WEIGHTED BY FREE FLOAT MARKET CAP. (2012=1000)

	THURSDAY 06/01/2022	SUNDAY 09/01/2022	% CHANGE	
			DAY BEFORE	YTD
FIRST MARKET	1176.5	1172.7	-0.33%	2.42%
SECOND MARKET	942.4	941.8	-0.06%	0.56%

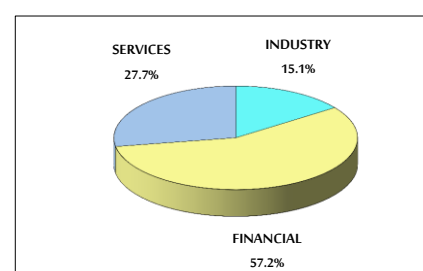
MARKET CAPITALIZATION (JD)

	15,831,994,401	15,781,150,502	-0.32%	1.84%
--	----------------	----------------	--------	-------

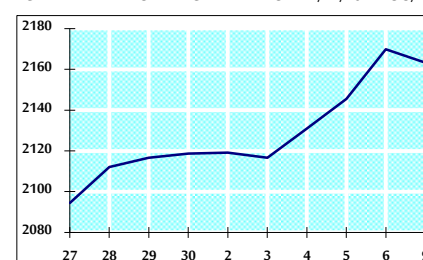
VALUE TRADED FROM 27/12/2021 TO 9/1/2022



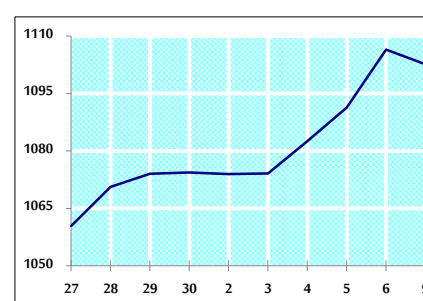
VALUE TRADED BY SECTOR SUNDAY 9/1/2022



GENERAL FREE FLOAT PRICE INDEX FROM 27/12/2021 TO 9/1/2022



ASE20 FREE FLOAT PRICE INDEX FROM 27/12/2021 TO 9/1/2022



GENERAL PRICE INDEX FROM 27/12/2021 TO 9/1/2022

