

## Daily Summary for Amman Stock Exchange

### VALUE TRADED (JD)

	2021	2022	NET CHANGE	CHANGE (%)
Daily	4,594,636	5,373,063	778,427	16.94%
Cumulative (2/1-12/1)	77,173,550	50,967,824	-26,205,726	-33.96%
Cumulative (2/1-12/1)	77,173,550	50,967,824	-26,205,726	-33.96%

### NO. OF SHARES TRADED

	2021	2022	NET CHANGE	CHANGE (%)
Daily	5,881,838	3,780,876	-2,100,962	-35.72%
Cumulative (2/1-12/1)	103,528,956	37,569,466	-65,959,490	-63.71%
Cumulative (2/1-12/1)	103,528,956	37,569,466	-65,959,490	-63.71%

### NO. OF TRANSACTIONS

	2021	2022	NET CHANGE	CHANGE (%)
Daily	2,365	3,122	757	32.01%
Cumulative (2/1-12/1)	27,765	26,377	-1,388	-5.00%
Cumulative (2/1-12/1)	27,765	26,377	-1,388	-5.00%

### SOME FINANCIAL RATIOS FOR THE ASE (12/1/2022)

SECTOR	P/E	P/BV	DIVIDEND YIELD (%)	TURNOVER (%)
FINANCIAL	35.989	0.893	3.183	0.053
SERVICES	-	1.291	2.217	0.091
INDUSTRY	28.313	2.122	2.645	0.051
OVERALL	37.866	1.139	2.892	0.060

### STOCK PRICE INDEX WEIGHTED BY FREE FLOAT MARKET CAPITALIZATION (1999=1000)

	TUESDAY 11/01/2022	WEDNESDAY 12/01/2022	% CHANGE	
			DAY BEFORE	YTD
GENERAL	2175.8	2176.3	0.02%	2.72%
FINANCIAL	2695.3	2694.4	-0.03%	3.45%
SERVICES	1350.2	1352.3	0.16%	1.87%
INDUSTRY	3672.1	3671.6	-0.01%	0.15%

### STOCK PRICE INDEX WEIGHTED BY FREE FLOAT MARKET CAPITALIZATION ASE20 (2014=1000)

	1111.0	1111.5	0.04%	3.45%
--	--------	--------	-------	-------

### STOCK PRICE INDEX WEIGHTED BY MARKET CAPITALIZATION (1991=1000)

	TUESDAY 11/01/2022	WEDNESDAY 12/01/2022	% CHANGE	
			DAY BEFORE	YTD
GENERAL	4099.2	4098.7	-0.01%	2.33%
BANKS	6819.2	6807.3	-0.17%	3.67%
INSURANCE	1381.3	1378.9	-0.17%	3.80%
SERVICES	792.3	797.7	0.67%	1.95%
INDUSTRY	4715.0	4712.3	-0.06%	0.25%

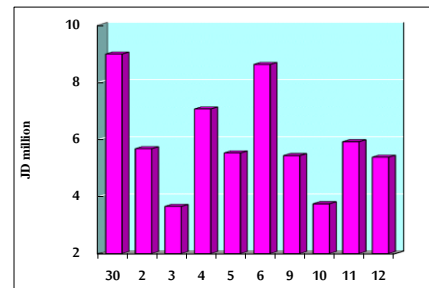
### STOCK PRICE MARKET INDEX WEIGHTED BY FREE FLOAT MARKET CAP. (2012=1000)

	TUESDAY 11/01/2022	WEDNESDAY 12/01/2022	% CHANGE	
			DAY BEFORE	YTD
FIRST MARKET	1181.2	1181.2	0.00%	3.17%
SECOND MARKET	935.5	938.7	0.35%	0.23%

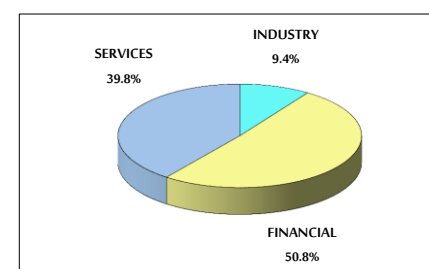
### MARKET CAPITALIZATION (JD)

	15,806,128,100	15,803,179,256	-0.02%	1.98%
--	----------------	----------------	--------	-------

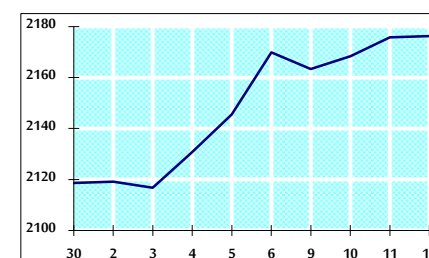
### VALUE TRADED FROM 30/12/2021 TO 12/1/2022



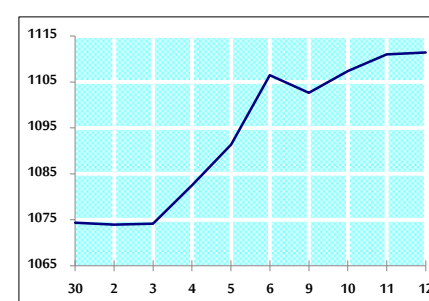
### VALUE TRADED BY SECTOR WEDNESDAY 12/1/2022



### GENERAL FREE FLOAT PRICE INDEX FROM 30/12/2021 TO 12/1/2022



### ASE20 FREE FLOAT PRICE INDEX FROM 30/12/2021 TO 12/1/2022



### GENERAL PRICE INDEX FROM 30/12/2021 TO 12/1/2022

